

ART. 0400

HINGE WITH THROUGH HOLES

MATERIAL:
Reinforced polyamide.
Oils and greases resistant.

SURFACE:
Satin.

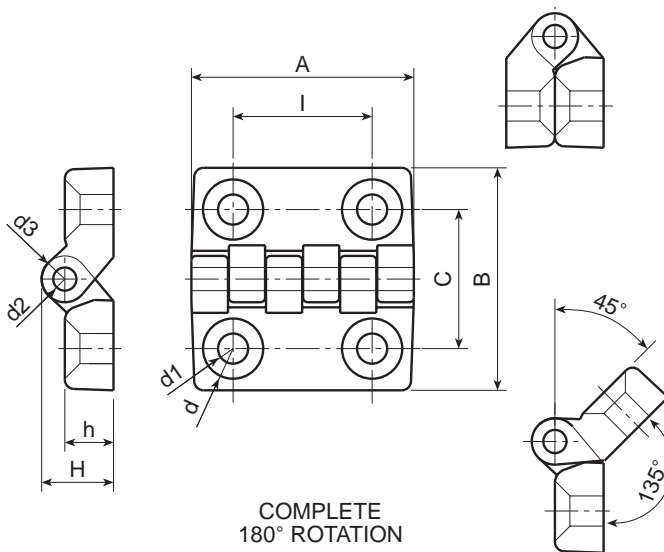
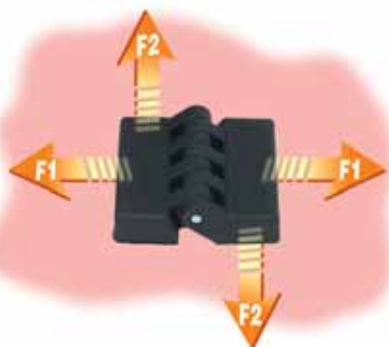
COLOUR:
Black (RAL 9011).

MAIN INSERT:
Zinc plated steel pin.

HOLE:
Through hole obtained by moulding the plastic.
Seat for countersunk screws DIN 7991/UNI 5933.

SPECIAL REQUESTS:

- It is possible to supply colours as shown in the table at page 15, on request and for quantities.



Art.	I	C	A	B	h	H	d1	d	d2	d3	Weight (gr)	F1 (N)	F2 (N)
O40020.TG04,501	20	20	32	32	7	10,5	04,5	8	3	7	9	1440	490
O40030.TG06,501	30	30	48	48	10,5	15,5	06,5	13	5	10	27	1960	1470
O40040.TG06,501	40	40	64	64	13	19	06,5	13	5	12	53	2850	1520
O40060.TG08,501	60	63	96	96	16	24	08,5	16	8	16	152	4300	1810
O40060.TG10,501	60	63	96	96	16	24	10,5	20	8	16	152	4300	1810



BOTECA

ART. 0401

HINGE WITH THROUGH HOLES AND STAINLESS STEEL PIN

INOX

MATERIAL:
Reinforced polyamide.
Oils and greases resistant.

SURFACE:
Satin.

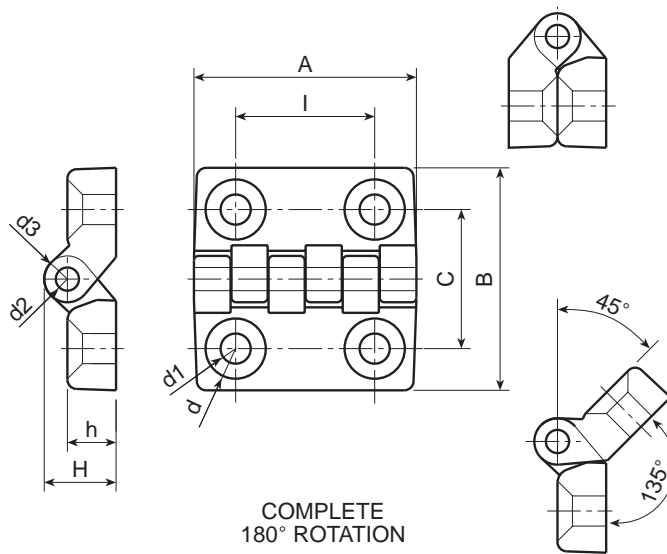
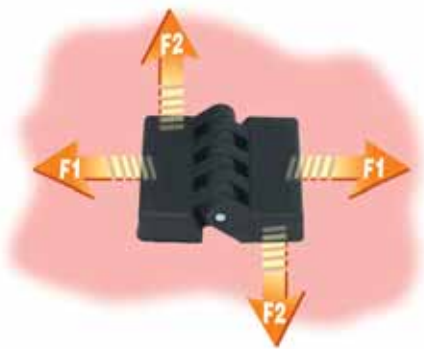
COLOUR:
Black (RAL 9011).

MAIN INSERT:
Stainless steel pin (AISI 303).

HOLE:
Through hole obtained by moulding the plastic.
Seat for countersunk screws DIN 7991/UNI 5933.

SPECIAL REQUESTS:

- It is possible to supply colours as shown in the table at page 15, on request and for quantities.



Art.	I	C	A	B	h	H	d1	d	d2	d3	Weight (gr)	F1 (N)	F2 (N)
O40120.TG04,501	20	20	32	32	7	10,5	04,5	8	3	7	9	1440	490
O40130.TG06,501	30	30	48	48	10,5	15,5	06,5	13	5	10	27	1960	1470
O40140.TG06,501	40	40	64	64	13	19	06,5	13	5	12	53	2850	1520
O40160.TG08,501	60	63	96	96	16	24	08,5	16	8	16	152	4300	1810
O40160.TG10,501	60	63	96	96	16	24	10,5	20	8	16	152	4300	1810

HINGES

ART. 0410

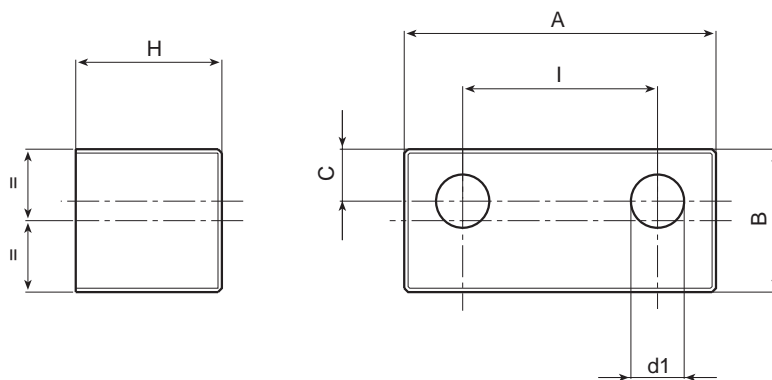
SHIM FOR 0400-30 HINGE WITH THROUGH HOLES

MATERIAL:
Reinforced polyamide.
Oils and greases resistant.

SURFACE:
Satin.

COLOUR:
Black (RAL 9011).

SPECIAL REQUESTS:
• None.



Art.	I	C	A	B	H	d1	Weight (gr)
041030.TG08,501	30	8	48	22	22,5	8,5	19



ART. 0411

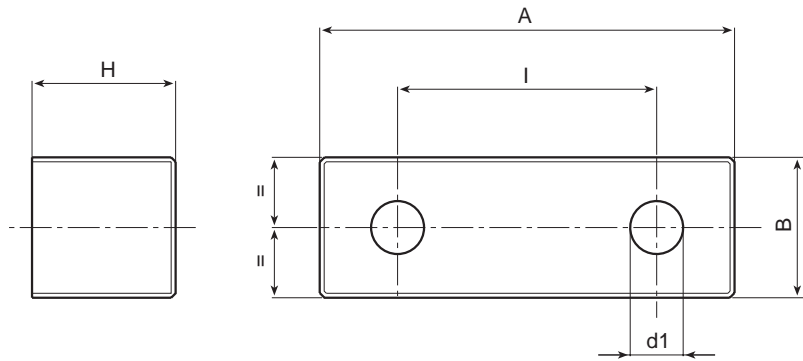
SHIM FOR 0400-40 HINGE WITH THROUGH HOLES

MATERIAL:
Reinforced polyamide.
Oils and greases resistant.

SURFACE:
Satin.

COLOUR:
Black (RAL 9011).

SPECIAL REQUESTS:
• None.



H I N G E S

Art.	I	A	B	H	d1	Weight (gr)
O41140.TG08,501	40	65	22	22,5	8,5	24

ART. 0430

FLAT HINGE WITH THREADED INSERT

MATERIAL:
Reinforced polyamide.
Oils and greases resistant.

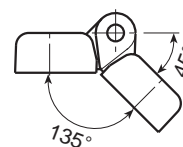
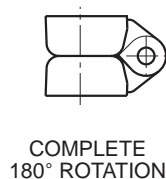
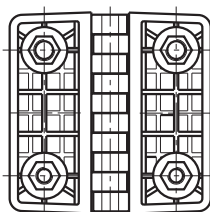
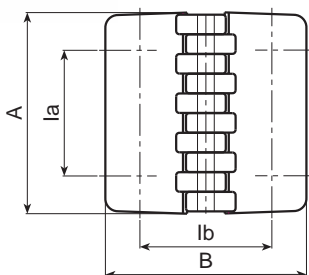
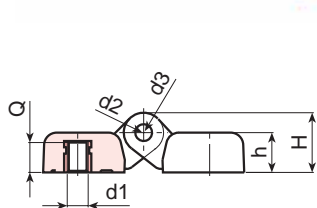
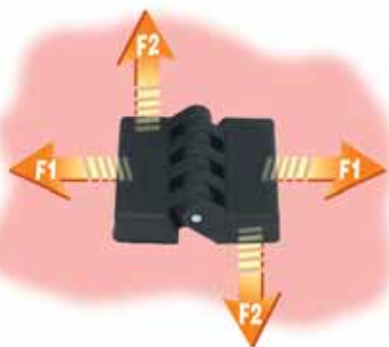
SURFACE:
Satin.

COLOUR:
Black (RAL 9011).

INSERTS:
Zinc plated steel pin.
Brass blind threaded bush.

SPECIAL REQUESTS:

- It is possible to supply the inserts in different materials, on request and for quantities.
- It is possible to supply colours as shown in the table at page 15, on request and for quantities.



Art.	la	lb	A	B	h	H	d1	Q	d2	d3	Weight (gr)	F1 (N)	F2 (N)
O43030.TM0501	30	30	48	48	10,5	15,5	M05	7	5	10	35	2000	1370
O43030.TM0601	30	30	48	48	10,5	15,5	M06	7	5	10	35	2000	1370
O43040.TM0601	40	40	64	64	13	19	M06	9	5	12	67	4100	1800
O43040.TM0801	40	40	64	64	13	19	M08	9	5	12	65	4100	1800
O43060.TM0801	60	63	95	95	19	28,5	M08	13	8	18	226	2450	2650
O43060.TM1001	60	63	95	95	19	28,5	M10	13	8	18	228	2450	2650



BOTECA

ART. 0431

FLAT HINGE WITH THREADED STUD

MATERIAL:
Reinforced polyamide.
Oils and greases resistant.

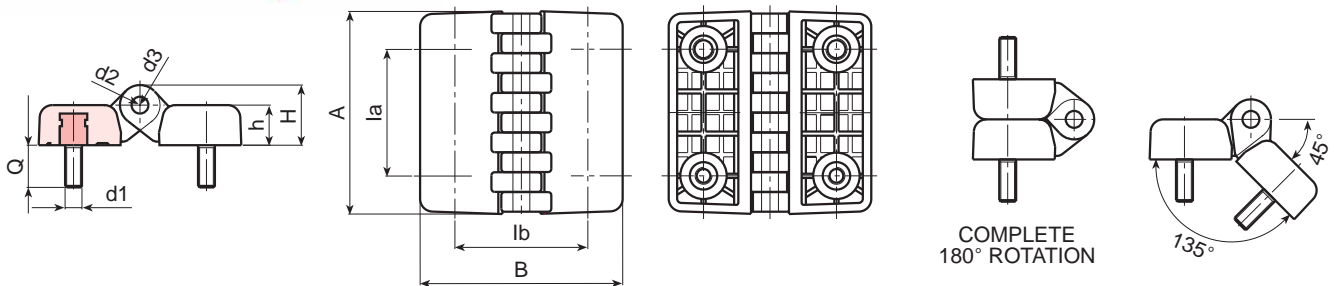
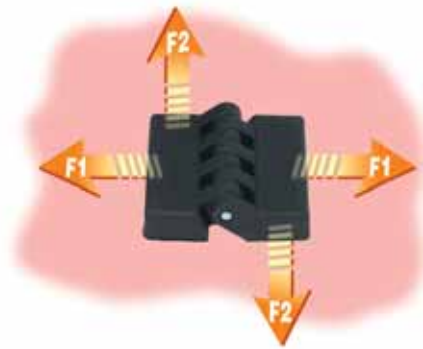
SURFACE:
Satin.

COLOUR:
Black (RAL 9011).

INSERTS:
Zinc plated steel pin.
Zinc plated steel threaded stud.

SPECIAL REQUESTS:

- It is possible to supply the inserts in different materials, on request and for quantities.
- It is possible to supply colours as shown in the table at page 15, on request and for quantities.



Art.	la	lb	A	B	h	H	d1	Q	d2	d3	Weight (gr)	F1 (N)	F2 (N)
O43130.TM05X1501	30	30	48	48	10,5	15,5	M05	15	5	10	49	1780	1370
O43130.TM06X1501	30	30	48	48	10,5	15,5	M06	15	5	10	52	1780	1370
O43140.TM06X2001	40	40	64	64	13	19	M06	20	5	12	90	4120	1760
O43140.TM08X2001	40	40	64	64	13	19	M08	20	5	12	100	4120	1760
O43160.TM08X2001	60	63	95	95	19	28,5	M08	20	8	18	260	4900	1275
O43160.TM10X2001	60	63	95	95	19	28,5	M10	20	8	18	278	4900	1275



FLAT HINGE WITH THREADED STUD AND THREADED INSERT

MATERIAL:
Reinforced polyamide.
Oils and greases resistant.

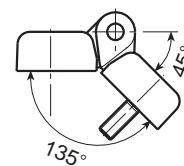
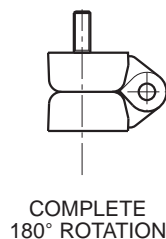
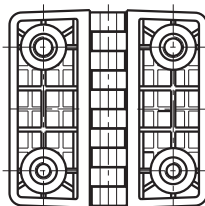
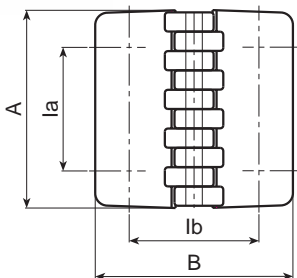
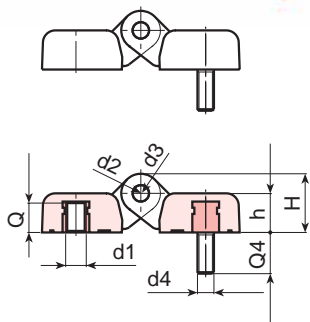
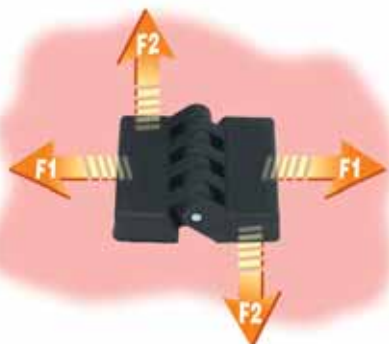
SURFACE:
Satin.

COLOUR:
Black (RAL 9011).

INSERTS:
Zinc plated steel pin.
Brass blind threaded bush.
Zinc plated steel threaded stud.

SPECIAL REQUESTS:

- It is possible to supply colours as shown in the table at page 15, on request and for quantities.



Art.	la	lb	A	B	h	H	d1	Q	d4	Q4	d2	d3	Weight (gr)	F1 (N)	F2 (N)
O43230.TM0501	30	30	48	48	10,5	15,5	M05	7	M05	15	5	10	40	1850	1350
O43230.TM0601	30	30	48	48	10,5	15,5	M06	7	M06	15	5	10	41	1850	1350
O43240.TM0601	40	40	64	64	13	19	M06	9	M06	20	5	12	73	4000	1600
O43240.TM0801	40	40	64	64	13	19	M08	9	M08	20	5	12	85	4000	1600
O43260.TM0801	60	63	95	95	19	28,5	M08	13	M08	20	8	18	240	3100	1400
O43260.TM1001	60	63	95	95	19	28,5	M10	13	M10	20	8	18	250	3100	1400



ART. 0433

FLAT HINGE WITH THREADED INSERT AND THROUGH HOLES

MATERIAL:
Reinforced polyamide.
Oils and greases resistant.

SURFACE:
Satin.

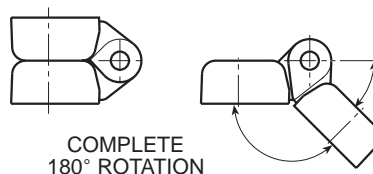
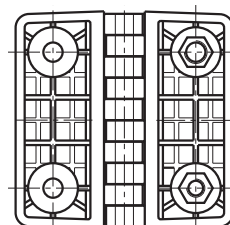
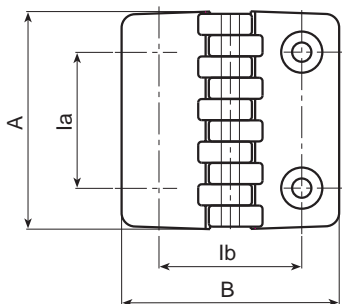
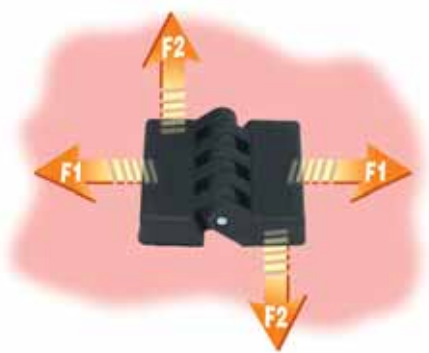
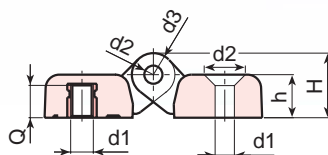
COLOUR:
Black (RAL 9011).

INSERTS:
Zinc plated steel pin.
Brass blind threaded bush.

HOLE:
Through hole obtained by moulding the plastic.
Seat for countersunk screws DIN 7991/UNI 5933.

SPECIAL REQUESTS:

- It is possible to supply the inserts in different materials, on request and for quantities.
- It is possible to supply colours as shown in the table at page 15, on request and for quantities.



Art.	la	lb	A	B	h	H	d1	Q	d2	d3	Weight (gr)	F1 (N)	F2 (N)
O43330.TM0601	30	30	48	48	10,5	15,5	M06 / D6,5	7	5	10	31	2000	1400
O43340.TM0601	40	40	64	64	13	19	M06 / D6,5	9	5	12	60	3500	1650

HINGES

ART. 0450

UNIVERSAL HINGE WITH THREADED INSERT FOR MOUNTING ON STRAIGHT DOOR

MATERIAL:
Reinforced polyamide.
Oils and greases resistant.

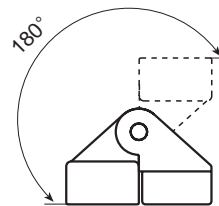
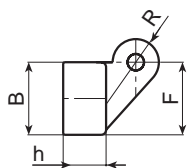
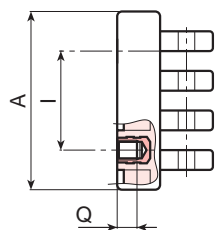
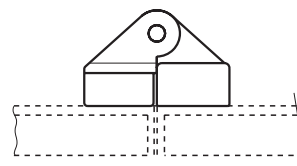
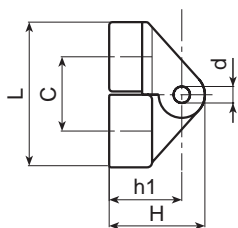
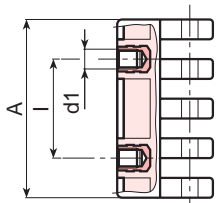
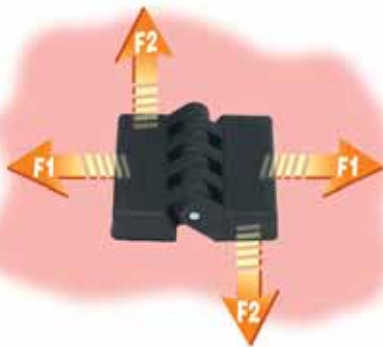
SURFACE:
Satin.

COLOUR:
Black (RAL 9011).

INSERTS:
Zinc plated steel pin.
Brass blind threaded bush.
(* Zinc plated steel blind threaded bush).

SPECIAL REQUESTS:

- None.



Art.	I	C	A	B	L	F	h	h1	H	d	R	d1	Q	Weight (gr)	F1 (N)	F2 (N)
O45030.TM0501	15	18	30	17	35	18	11	19	25	4	11	M05	8	26	1180	1130
O45054.TM0601	30	22	54	21	44	22	13	22	30	5	15	M06	7	58	1520	2980
O45078.TM0801	42	32	78	30	61	30	18	31	42	8	21	M08 (*)	10	178	885	2875



BOTECA

ART. 0451

UNIVERSAL HINGE WITH THREADED STUD FOR MOUNTING ON STRAIGHT DOOR

MATERIAL:
Reinforced polyamide.
Oils and greases resistant.

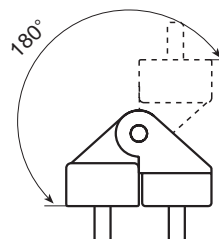
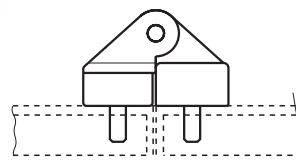
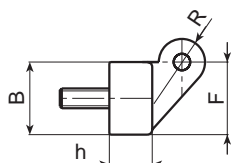
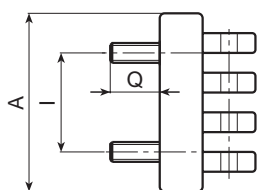
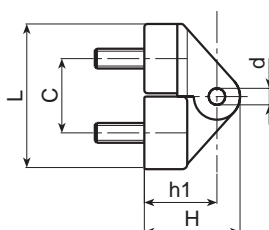
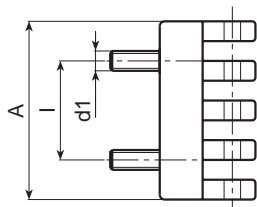
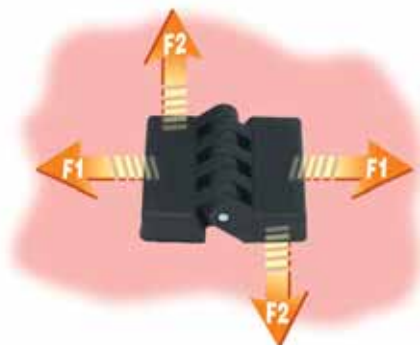
SURFACE:
Satin.

COLOUR:
Black (RAL 9011).

INSERTS:
Zinc plated steel pin.
Zinc plated steel threaded stud.

SPECIAL REQUESTS:

- None.



Art.	I	C	A	B	L	F	h	h1	H	d	R	d1	Q	Weight (gr)	F1 (N)	F2 (N)
O45130.TM05X1001	15	18	30	17	35	18	11	19	25	4	11	M05	10	38	690	1080
O45154.TM06X1501	30	22	54	21	44	22	13	22	30	5	15	M06	15	72	295	1670
O45178.TM08X2001	42	32	78	30	61	30	18	31	42	8	21	M08	20	190	1025	2830



BOTECA

ART. 0452

UNIVERSAL HINGE WITH THREADED INSERT FOR MOUNTING ON ANGULAR DOOR

MATERIAL:
Reinforced polyamide.
Oils and greases resistant.

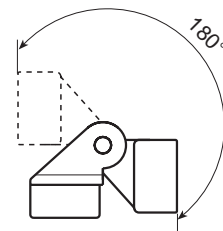
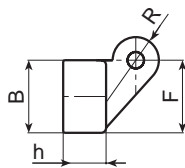
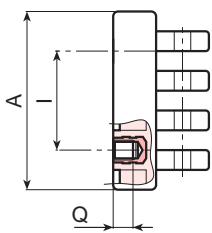
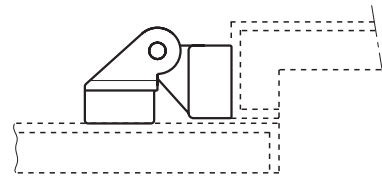
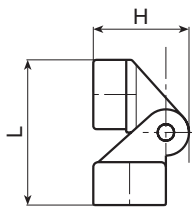
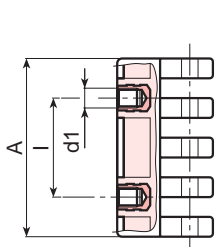
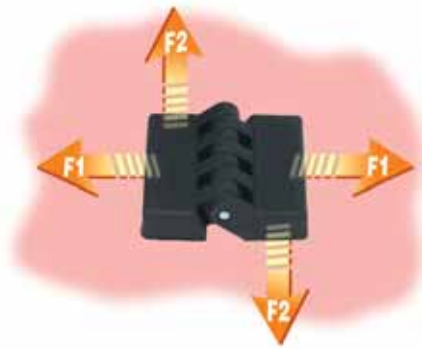
SURFACE:
Satin.

COLOUR:
Black (RAL 9011).

INSERTS:
Zinc plated steel pin.
Brass blind threaded bush.
(*) Zinc plated steel blind threaded bush.

SPECIAL REQUESTS:

- None.



Art.	I	A	B	L	F	h	h1	H	d	R	d1	Q	Weight (gr)	F1 (N)	F2 (N)
O45230.TM0501	15	30	17	36	18	11	19	25	4	11	M05	8	26	1180	1130
O45254.TM0601	30	54	21	44	22	13	22	30	5	15	M06	7	58	1520	2980
O45278.TM0801	42	78	30	62	30	18	31	42	8	21	M08 (*)	10	178	885	2875

HINGES



BOTECA

ART. 0453

UNIVERSAL HINGE WITH THREADED STUD FOR MOUNTING ON ANGULAR DOOR

MATERIAL:
Reinforced polyamide.
Oils and greases resistant.

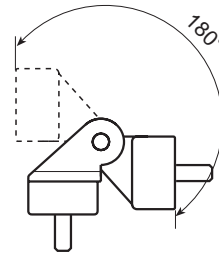
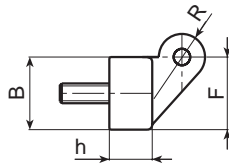
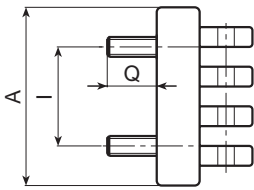
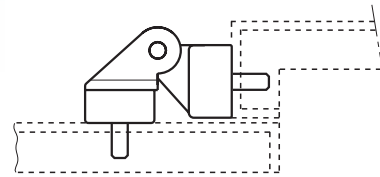
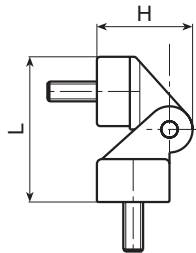
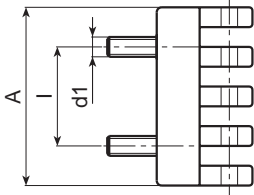
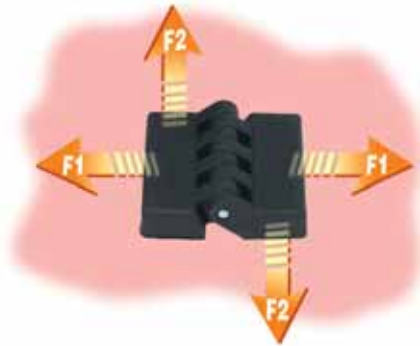
SURFACE:
Satin.

COLOUR:
Black (RAL 9011).

INSERTS:
Zinc plated steel pin.
Zinc plated steel threaded stud.

SPECIAL REQUESTS:

- None.



Art.	I	A	B	L	F	h	h1	H	d	R	d1	Q	Weight (gr)	F1 (N)	F2 (N)
O45330.TM05X1001	15	30	17	35	18	11	19	25	4	11	M05	10	38	690	1080
O45354.TM06X1501	30	54	21	44	22	13	22	30	5	15	M06	15	72	295	1670
O45378.TM08X2001	42	78	30	61	30	18	31	42	8	21	M08	20	190	1025	2830

HINGES



BOTECA