

**Materiale:**

**O300:**

Lega di zama pressofusa (lega di zinco, alluminio e rame).

**O300 CIN:**

Acciaio inox AISI 316.

**Superficie:**

**O300:**

Liscia. Verniciata per cataforesi nera.

**O300 L:**

Cromata lucida.

**O300 CIN:**

Spazzolata naturale.

**Inserto:**

**Tutte le versioni:**

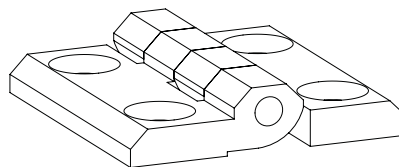
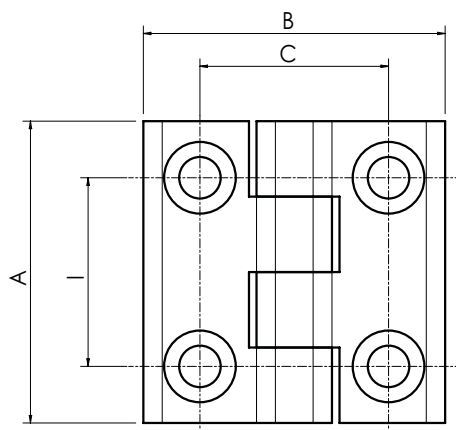
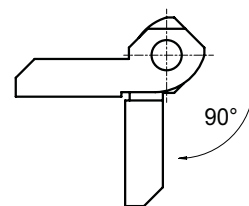
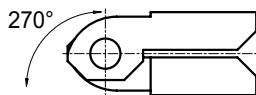
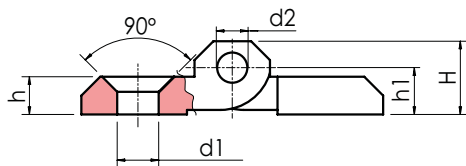
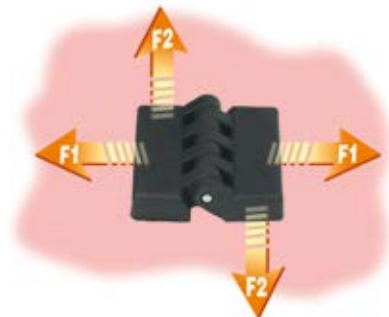
Spina di rotazione in acciaio inox AISI 303.

**Fori:**

Fori passanti ottenuti per stampaggio. Foro svasato di 90° per viti UNI 5933 - UNI 6109.

**RICHIESTE SPECIALI:**

- Nessuna.



# CERNIERA IN ZAMA NERA

## O300



ZAMAK



	Art.	I	C	A	B	H	h	h1	d2	d1	g	F1 (N)	F2 (N)
●	<b>O30025.ZG5.501</b>	25	25	40	40	9	5	5,5	4	5,5	47		
●	<b>O30030.ZG6.501</b>	30	30	50	50	11,5	6	6	6	6,5	92	6230	1420
●	<b>O30036.ZG6.501</b>	36	36	60	60	11,5	6	6	6	6,5	100		
●	<b>O30036.ZG8.501</b>	36	36	60	60	11,5	6	6	6	8,5	98		
●	<b>O30040.ZG6.501</b>	40	40	64	64	11,5	6	6	6	6,5	110	4340	4200

# CERNIERA IN ZAMA CROMATA

## O300 L



ZAMAK



	Art.	I	C	A	B	H	h	h1	d2	d1	g	F1 (N)	F2 (N)
●	<b>O30025.ZG5.5L</b>	25	25	40	40	9	5	5,5	4	5,5	47		
●	<b>O30030.ZG6.5L</b>	30	30	50	50	11,5	6	6	6	6,5	92	6230	1420
●	<b>O30036.ZG8.5L</b>	36	36	60	60	15	8	9	8	8,5	100		

# CERNIERA IN ACCIAIO INOX

## O300 CIN



AISI 316



**INOX**



	Art.	I	C	A	B	H	h	h1	d2	d1	g	F1 (N)	F2 (N)
●	<b>O30025.HG5.5CIN</b>	25	25	40	40	9	5	5,5	4	5,5	60		
●	<b>O30030.HG6.5CIN</b>	30	30	50	50	11	5,5	6,5	6	6,5	95	19600	9800
●	<b>O30036.HG8.5CIN</b>	36	36	60	60	14,5	7,7	8,5	8	8,5	185		

Disponibilità a magazzino in %

() 90% (●) 40% (●) 5% (●)

BOTECO® - © All right reserved - [www.boteco.it](http://www.boteco.it)  
Any unauthorized reproduction is strictly forbidden

**BOTECO**  
**METAL LINE**

**O**  
**CERNIERE**