



Markes GmbH & Co. KG Metallwarenfabrik

Wiesenstraße 61
58507 Lüdenscheid, Germany
Phone: + 49 (0) 2351 1531-0
Fax: +49 (0) 2351 1531-11
info@markes.de · www.markes.de



Dear Customer.

Are you unable to find what you need in our extensive range of products? Or do you need a special version for a specific application?

To enable the preparation of an offer that is tailored to your needs you are kindly requested to answer the following questions:

By Fax: +49 (0)2351 1531-11

By Mail: info@markes.de

Kindly enclose a drawing or sketch with your request for quotation – if available.

Ball bearing assemblies:

Product in chapter / on page: _____

Deviating dimensions, version: _____

Carrying capacity: _____

Number of revolutions: _____

Further requirements: _____

Alternative materials are permissible? YES NO

Variants are planned? YES NO

Particulars:

Planned annual volume? _____

Call-off quantities? _____

Non-recurrent requirement Permanent requirement

Type of packaging? _____

Packing unit? _____

Customer specific test specifications have to be respected?

YES NO

If YES, please specify? _____

Plastic part:

Specified material? _____

Antistatic treatment is required? YES NO

Treatment for contact with foodstuffs is required?

YES NO

Specified colour? _____

Specified surface? _____

Appearance standards? _____

Further requirements (customer logo, etc.)? _____

Alternative materials are permissible? YES NO

Variants are planned? YES NO

Metal part:

Specified material? _____

Surfaces? _____

Hardening and/or tempering? _____

Raw edge/direction of punching? _____

Absence of burr is required? YES NO

Appearance standards? _____

Further requirements (customer logo, etc.)? _____

Alternative materials are permissible? YES NO

Variants are planned? YES NO

Person to contact to clarify technical issues:

Firm: _____

Name: _____

Department: _____

Specified date of delivery: _____

Phone: _____

Fax: _____

Email: _____

Load capacity:

The load capacity of the ball bearing is specified as load rating C in daN and tested under following conditions:

- 200mm roller length (short roller)
- axis fixed restrained
- rotational speed 100min⁻¹ - 200min⁻¹
- 1.000.000 revolutions (load change)

Service life:

From the load capacity the service life of the ball bearing could be calculated with following formula:

$$Lh = \frac{1000000}{60 \times n} \left(\frac{C}{P} \right)^p$$

Herein are:

- L_h: nominal service life [h]
- C: dynamic load rating [N]
- n: revolutions [min⁻¹]
- P: dynamic bearing load [N]
(P = C in case of radial load only)
- p: exponent of service life equation
(for ball bearing is considered p=3)

Plastics:

Polypropylen (PP)

- good mechanical characteristic
- excellent shock resistance

Polyacetal (POM)

- high hardness and stiffness
- low absorbtion of humidity
- good friction and abrasion characteristic

Polyamid (PA)

- tenacious/rigid
- very good mechanical characteristic and abrasion resistance

Antistatic Plastics

- PP
- POM

The use of antistatic plastics is only premissible in the provided temperature range. We can not give any guarantee for the conductivity.

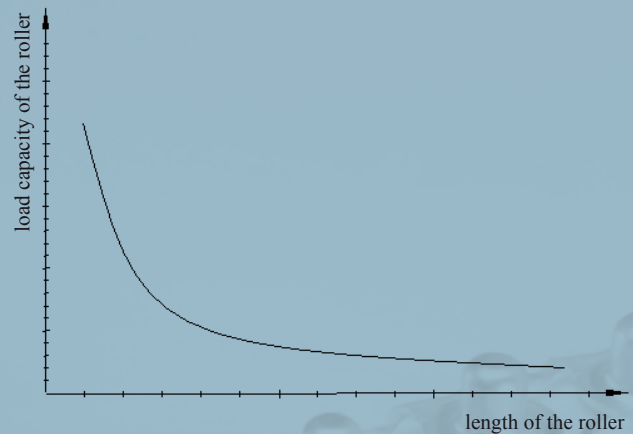
Attention: Do not use in explosion-proofed areas !!!

Affecting conditions:

Under different conditions the roller manufacturer has to determine the real new load capacity of the roller by himself. Kindly note that the service life and the load capacity of your roller will be determined by:

- roller length
- axis diameter
- style of the axis
- environment influences

Influence of the roller length for the load rating:



Lubricants:

Our ball bearings are equipped with high quality lubricants. Furthermore our special greases and oils can reach a temperature range from -35°C to +180°C. Our tested lubricants are best proved for many years under every conditions. In a given case please ask for the optimal lubricants recommended by MARKES..

Metal roller bearings MTR up to 150 daN	1
Metal roller bearings MTS up to 250 daN	2
Plastic roller bearings KTR up to 10 daN	3
Plastic roller bearings KTR/KTE up to 150 daN	4
Skate Wheels KLR/SLR/SR	5
Retainer for standard bearings LH/KLH/FL/Attachment	6
Sprockets Sprocket wheels/Belt drive wheels	7
Components Sprocket wheels/Belt drive wheels/Taper Sleeves/Steel housings	8
Special bearings Radial ball bearings/Pressed thrust bearings/Cone ball bearings	9
Additional Products Ball Transfer Unit/Poly directional wheel/Brake roller unit/Metal Roller	10

Metal roller bearings MTR up to 150 daN



MTR

Metal roller bearings MTR

- for inserting into steel tubes
- semi precision ball bearing or ball bearing according DIN
- typically use and characteristic
 - semi precision: easy running for gravity conveyors and for axial load too up to 200 r.p.m. usual
 - DIN: noise reduced and used for higher loads and power driven conveyors
- extensive attachment
- special type made of stainless steel or with special lubrication on request



MTR

Metal roller bearings MTS up to 250 daN



MTS

Metal roller bearings MTS

- for inserting in steel tubes
- ball bearings according to DIN
- typically use and characteristic
 - suitable for heavy loads (palett transport)
 - used as counter bearing for brake rollers
- extensive attachment
- special type made of stainless steel or with special lubrication on request



MTS

Plastic roller bearings KTR up to 10 daN



KTR

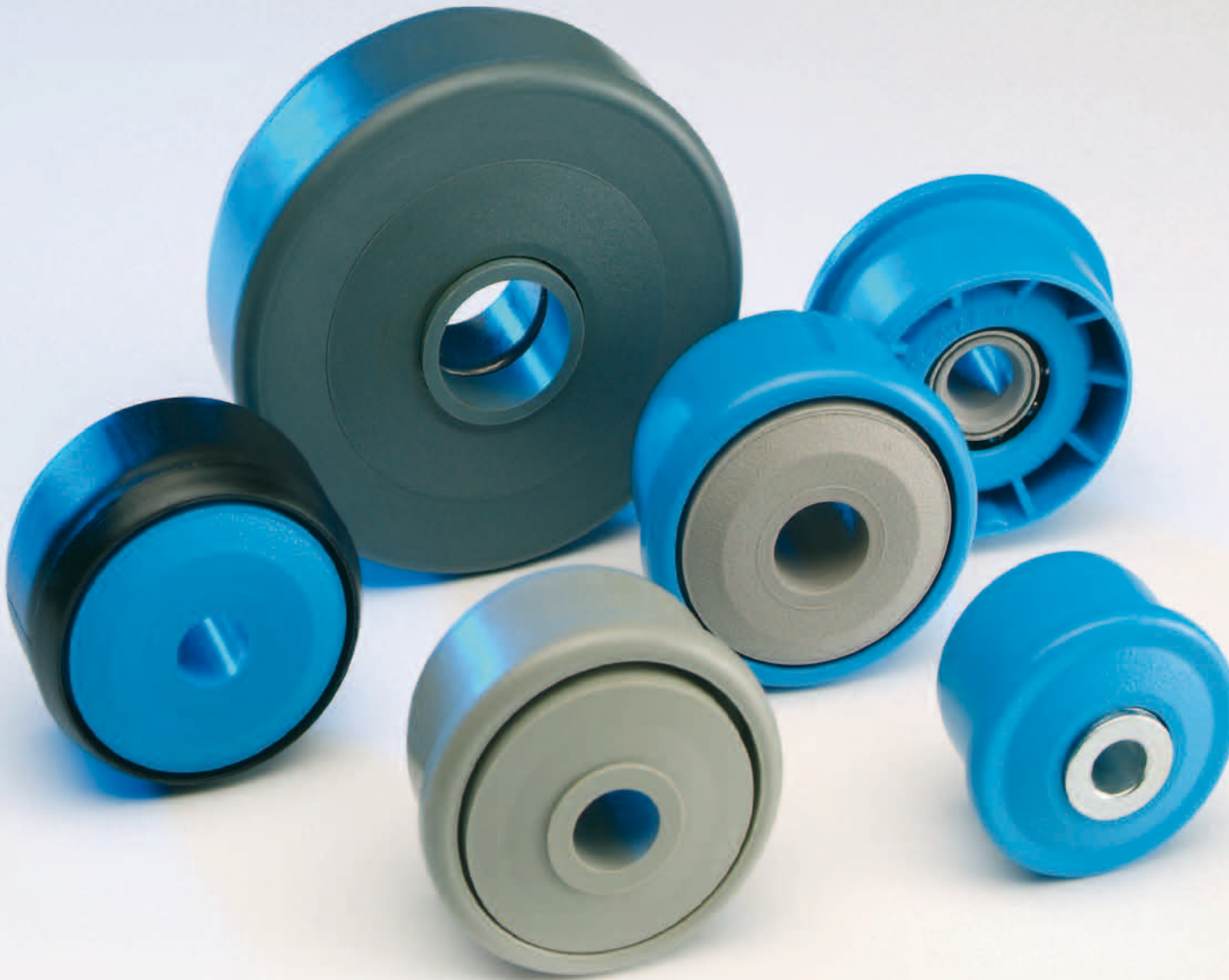
Plastic roller bearings KTR

- easy assembling by pressing into tubes
- one or two ball cages
- typically use and characteristic
 - easy running for gravity conveyors
- extensive attachment
- special type like antistatic, with special lubrication or individual lay-out on request



KTR

Plastic roller bearings KTR/KTE up to 150 daN



KTR/KTE

Plastic roller bearings KTR/KTE

- KTR for pressing and KTE for inserting into tubes
- semi precision ball bearing or ball bearing according DIN
- typically use and characteristic
 - semi precision: easy running for gravity conveyor and for axial load too up to 200 r.p.m.
 - DIN: noise reduced and used for higher loads and power driven conveyors
- special type like antistatic, with special lubrication or individual lay-out in request



KTR/KTE

Skate Wheels KLR/SLR/SR



KLR/SLR/SR

Skate Wheels KLR/SLR/SR

- plastic skate wheels double-row ball cage
- free running on axis
- typically use and characteristic
 - very easy running for skate wheel conveyors
- extensive attachment
- special type like antistatic, noise reduced or individual lay-out on request



KLR/SLR/SR

Retainer for standard bearings LH/KLH/FL



LH/KLH/FL

Retainer for standard bearings LH/KLH/FL

- for welding into the tube
- typically use and characteristic
 - for conveyor rollers for bulk-material systems
- extensive attachment
- special type like stainless steel on request



LH/KLH/FL

Sprockets



SPROCKETS

Sprockets

- easy assembling by pressing into the tube
- precision ball bearing according DIN
- typically use and characteristic
 - for friction and fix driven conveyor systems
- extensive attachment
- special types on request

SPROCKETS

Components



COMPONENTS

Components

- single components for self-assembling with precision ball bearings according DIN
- MARKES can not give any guarantee for the self-assembled compoments
- special types on request



COMPONENTS

Special bearings



SPECIAL BEARINGS

Special Bearings

- wide range of special ball bearings for different use
- radial ball bearings
 - for use in shutters
- cone ball bearings
 - for the wheel industry
- pressed thrust ball bearings
 - especially for axial load
- special types on request



SPECIAL BEARINGS

Additional products/Attachment



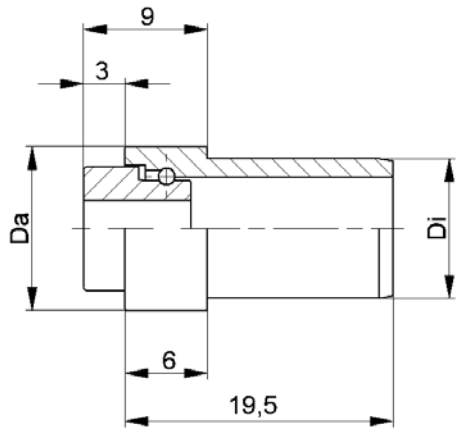
ADDITIONAL PRODUCTS

Additional products/Attachment

- extensive attachment for further products
- sales being effected via cooperation partners
- special bearings on request



ADDITIONAL PRODUCTS

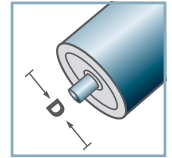


MTR-01			
Type	Di	Da	Load Rating C [daN]
MTR-12x1,0.01	10,15	11,9	4

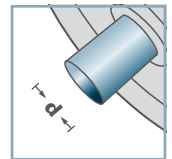
Other dimensions on request!

- ☞ Housing: Stainless
- ☞ Inner Race: Stainless
- ☞ Ball: Stainless

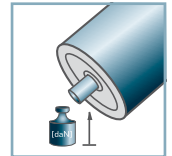
MTR-01



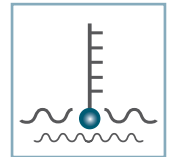
D [mm]
12



d [mm]
4



C [daN]
4



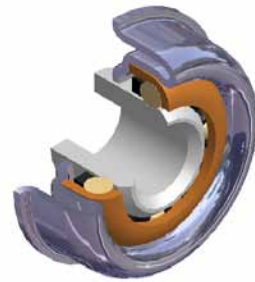
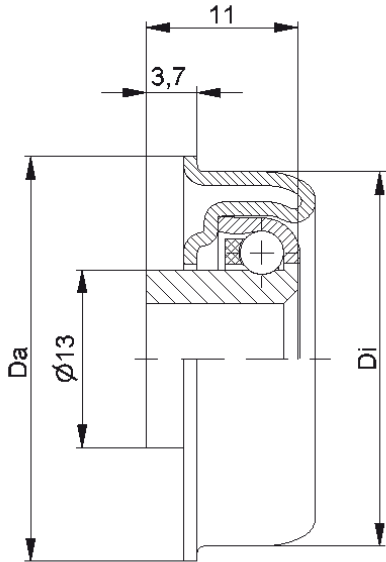
T [°C]
0° - 100°



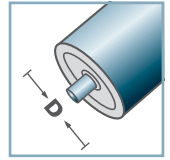
Carton [pcs.]



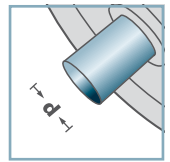
MTR



MTR-16



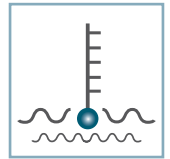
D [mm]
30



d [mm]
8; 10



C [daN]
30



T [°C]
0° - 100°



Vactra No. 2



Carton [pcs.]

500

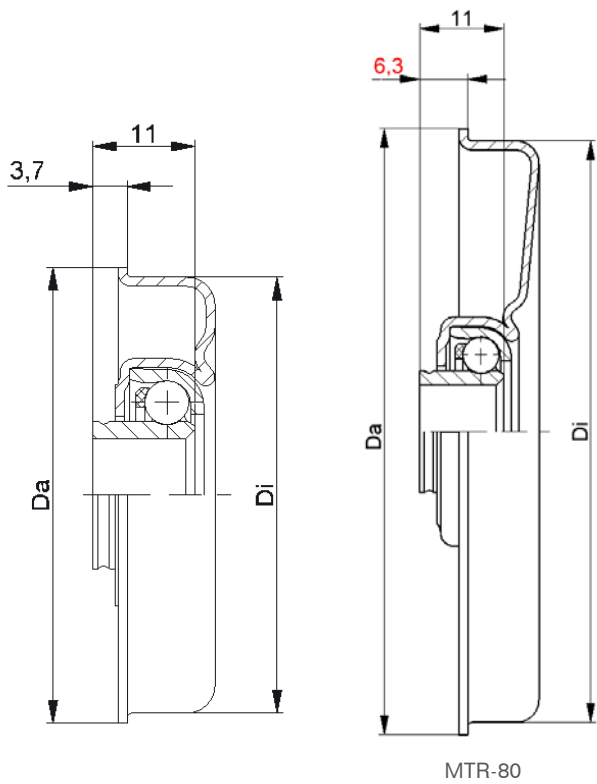
MTR-16			
Type	Di ±0.1	Da ±0.2	Load Rating C [daN]
MTR-30x1,2.16	27,6	29,6	30
MTR-30x1,5.16	27,3	29,6	30

Other dimensions on request!

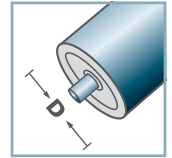
- ☛ Housing: Steel, Zinc plated
- ☛ Bearing RL-16
 - ☛ Bearing Shell: Steel, Hardened
 - ☛ Inner Race: Steel, Hardened, Zinc plated
 - ☛ Ball Cage: Plastic
 - ☛ Ball: Steel



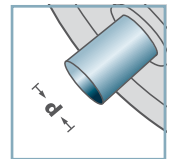
MTR



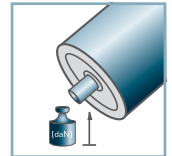
MTR-20



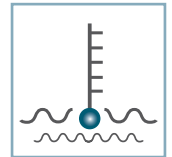
D [mm]
40 - 80



d [mm]
8; 10; 12; SW11



C [daN]
80



T [°C]
0° - 100°



Vactra No. 2



Carton [pcs.]

ø40:	250
ø48:	350
ø50:	350
ø60:	200
ø80:	125

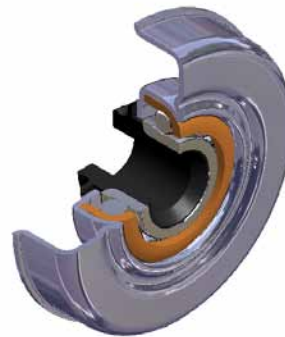
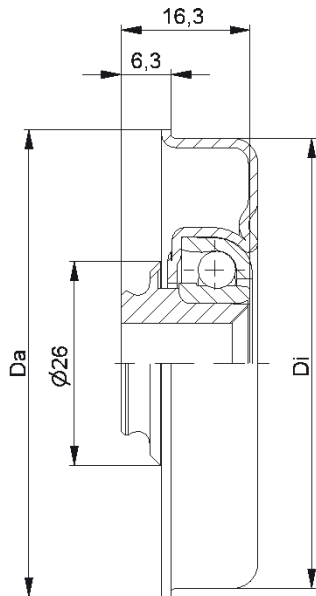
MTR-20			
Type	Di ±0.1	Da ±0.2	Load Rating C [daN]
MTR-40x1,5.20	37,3	39,5	80
MTR-40x2,0.20	36,3	39,5	80
MTR-48x1,5.20	45,3	47,5	80
MTR-50x1,5.20	47,3	49,5	80
MTR-50x2,0.20	46,3	49,5	80
MTR-60x1,5.20	57,3	59,5	80
MTR-60x2,0.20	56,3	59,5	80
MTR-80x2,0.20	76,4	79,5	80

Other dimensions on request!

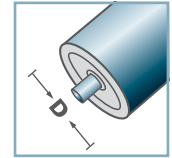
- ☛ Housing: Steel, Zinc plated
- ☛ Bearing RL-20
 - ☛ Bearing Shell: Steel, Hardened
 - ☛ Inner Race: Steel, Hardened, Zinc plated
 - ☛ Ball Cage: Plastic
 - ☛ Ball: Steel



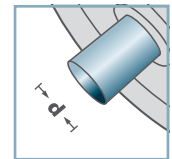
MTR



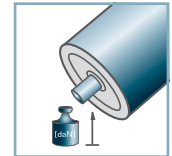
MTR-30



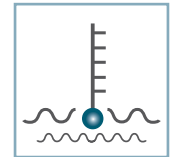
D [mm]
50 - 80



d [mm]
8; 10; 12; SW11



C [daN]
120



T [°C]
0° - 100°



EP 0



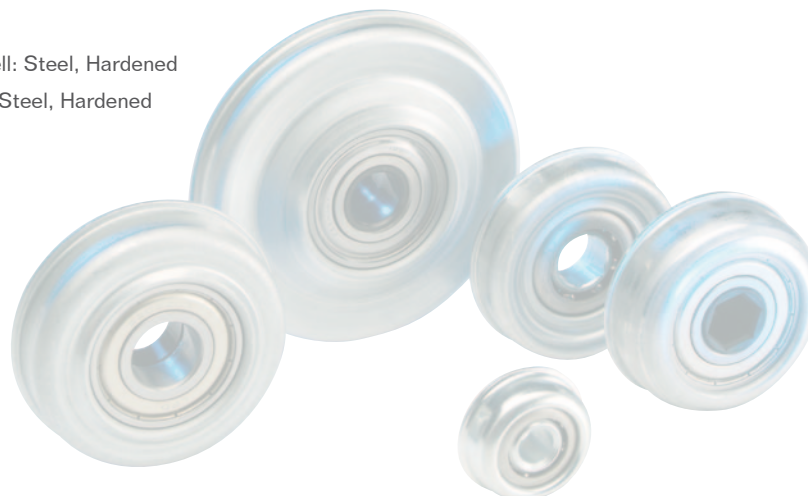
Carton [pcs.]

ø50: 300
ø60: 200
ø80: 125

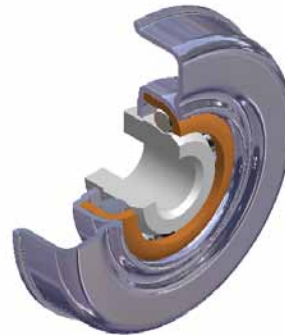
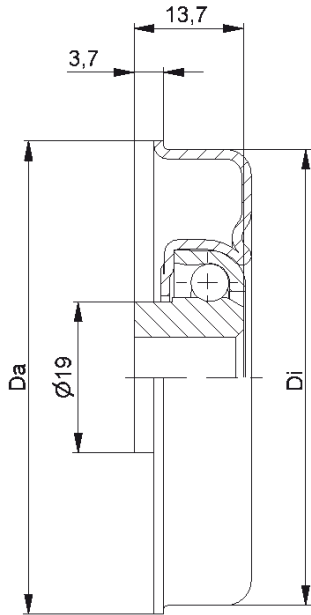
MTR-30			
Type	Di ±0.1	Da ±0.2	Load Rating C [daN]
MTR-50x1,5.30	47,3	49,5	120
MTR-50x2,0.30	46,3	49,5	120
MTR-50x3,0.30	44,3	49,5	120
MTR-60x1,5.30	57,3	59,5	120
MTR-60x2,0.30	56,3	59,5	120
MTR-80x2,0.30	76,4	79,5	120

Other dimensions on request!

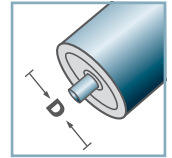
- ☛ Housing: Steel, Zinc plated
- ☛ Reducing Bush: Plastic
- ☛ Bearing RL-30
 - ☛ Bearing Shell: Steel, Hardened
 - ☛ Inner Race: Steel, Hardened
 - ☛ Ball: Steel



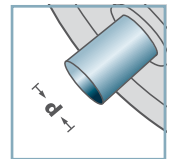
MTR



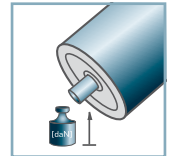
MTR-30-2



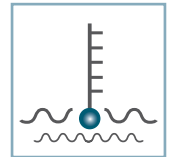
D [mm]
50 - 80



d [mm]
10; 12; 14; 15;
SW11



C [daN]
120



T [°C]
0° - 100°



EP 0



Carton [pcs.]

ø50: 300
ø60: 200
ø80: 125

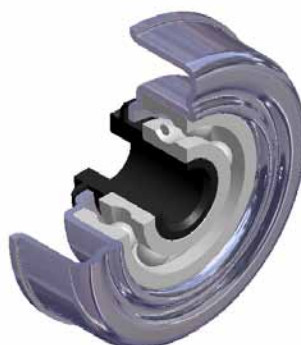
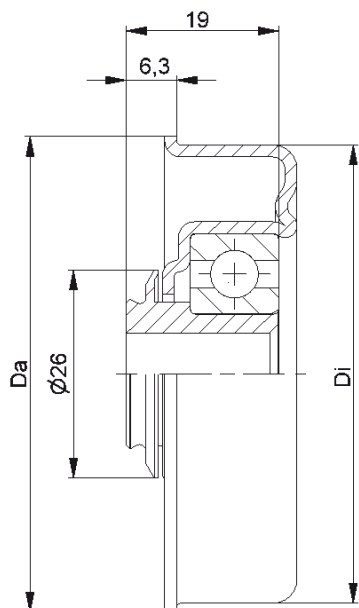
MTR-30-2			
Type	Di ±0.1	Da ±0.2	Load Rating C [daN]
MTR-50x1,5.30-2	47,3	49,5	120
MTR-50x2,0.30-2	46,3	49,5	120
MTR-60x1,5.30-2	57,3	59,5	120
MTR-60x2,0.30-2	56,3	59,5	120
MTR-80x2,0.30-2	76,4	79,5	120

Other dimensions on request!

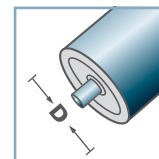
- ☛ Housing: Steel, Zinc plated
- ☛ Bearing RL-30-2
 - ☛ Bearing Shell: Steel, Hardened
 - ☛ Inner Race: Steel, Hardened
 - ☛ Ball: Steel



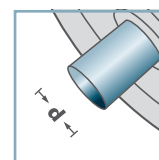
MTR



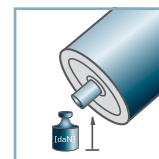
MTR-40



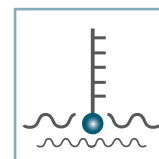
D [mm]
50 - 80



d [mm]
10; 12; SW11



C [daN]
120 - 150



T [°C]
0° - 80°



EP 2



Carton [pcs.]

ø50: 100
ø60: 200
ø80: 125

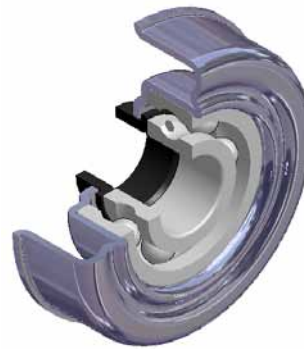
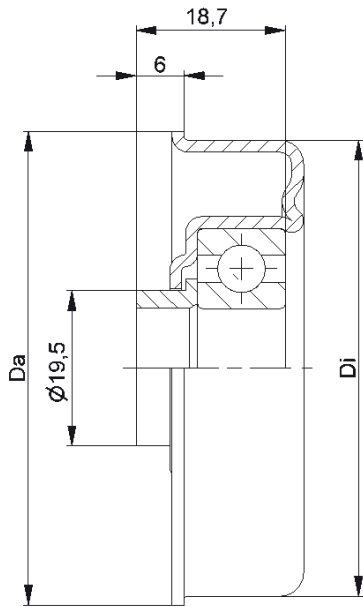
MTR-40			
Type	Di ±0.1	Da ±0.2	Load Rating C [daN]
MTR-50x1,5.40	47,3	49,5	120
MTR-50x2,0.40	46,3	49,5	120
MTR-60x1,5.40	57,3	59,5	150
MTR-60x2,0.40	56,3	59,5	150
MTR-60x3,0.40	54,3	59,5	150
MTR-80x2,0.40	76,5	79,5	150

Other dimensions on request!

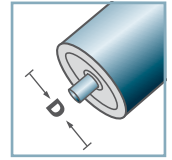
- ☛ Housing: Steel, Zinc plated
- ☛ Reducing Bush: Plastic
- ☛ Bearing 6202



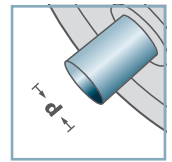
MTR



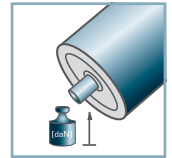
MTR-40.15



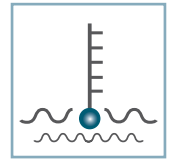
D [mm]
50 - 80



d [mm]
15



C [daN]
120 - 150



T [°C]
0° - 80°



EP 2



Carton [pcs.]

ø50: 100
ø60: 200
ø70: 125
ø80: 125

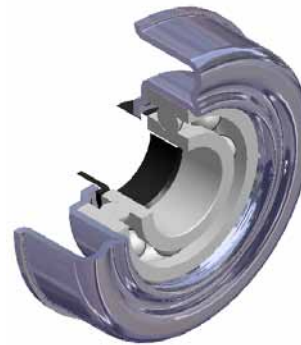
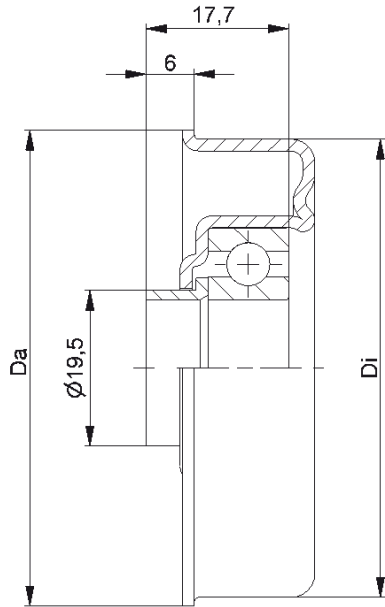
MTR-40.15			
Type	Di ±0.1	Da ±0.2	Load Rating C [daN]
MTR-50x1,5.40.15	47,3	49,5	120
MTR-50x2,0.40.15	46,3	49,5	120
MTR-60x1,5.40.15	57,3	59,5	150
MTR-60x2,0.40.15	56,3	59,5	150
MTR-60x3,0.40.15	54,3	59,5	150
MTR-70x2,0.40.15	66,4	69,5	150
MTR-80x2,0.40.15	76,5	79,5	150

Other dimensions on request!

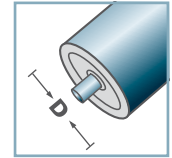
- ☉ Housing: Steel, Zinc plated
- ☉ Distance Bush: Plastic
- ☉ Bearing 6202



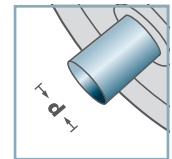
MTR



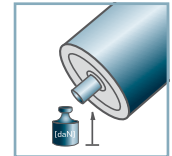
MTR-45.17



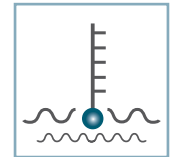
D [mm]
50, 80



d [mm]
17



C [daN]
150



T [°C]
0° - 80°



EP 2



Carton [pcs.]

ø50: 100
ø80: 125

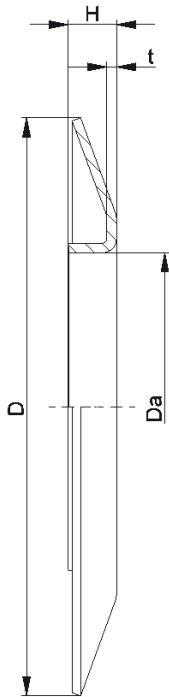
MTR-45.17			
Type	Di ±0.1	Da ±0.2	Load Rating C [daN]
MTR-50x1,5.45.17	47,3	49,5	120
MTR-80x2,0.45.17	76,5	79,5	150

Other dimensions on request!

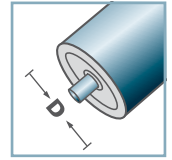
- ☛ Housing: Steel, Zinc plated
- ☛ Distance Bush: Plastic
- ☛ Bearing 6003



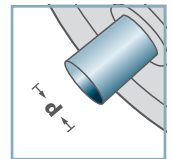
MTR



BS-



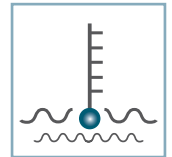
D [mm]
50 - 108



d [mm]
-



C [daN]
-



T [°C]
-



-



Carton [pcs.]

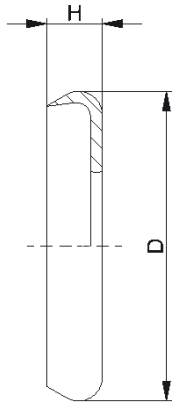
BS-				
Type	Da ±0.1	D -2	H ±0.5	t
BS-50-130	49,9	130	10	1,5
BS-60-130	59,9	130	10	1,5
BS-80-150	79,9	150	14	2,5
BS-89-150	88,9	150	14	2,5
BS-108-150	107,9	150	14	2,5

Other dimensions on request!

Wheel Flange: Steel



MTR



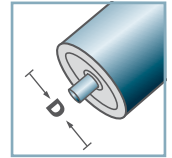
DK-MTR		
Type	D	H
DK-MTR-20	34	7
DK-MTR-30-2	39	7

Other dimensions on request!

☞ Seal Bonnet: Plastic

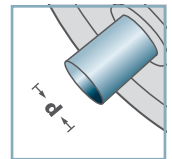


DK-MTR-



D [mm]

-



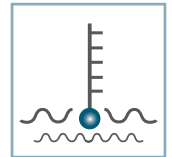
d [mm]

-



C [daN]

-



T [°C]

0° - 80°

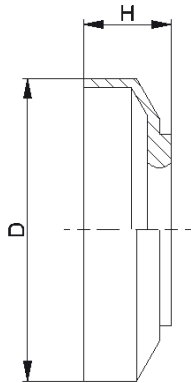


-



Carton [pcs.]

-



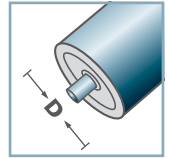
DK-MTR		
Type	D	H
DK-MTR-30	38	11

Other dimensions on request!

☞ Seal Bonnet: Plastic

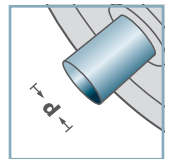


DK-MTR-



D [mm]

-



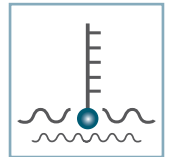
d [mm]

-



C [daN]

-



T [°C]

0° - 80°

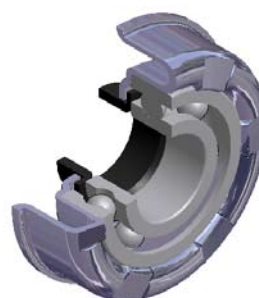
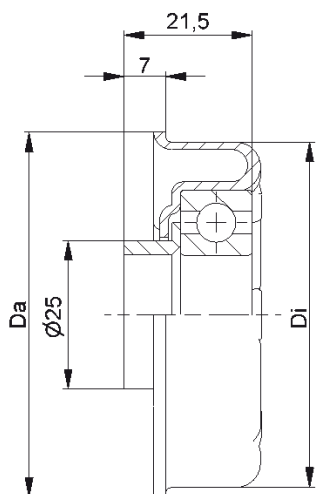


-



Carton [pcs.]

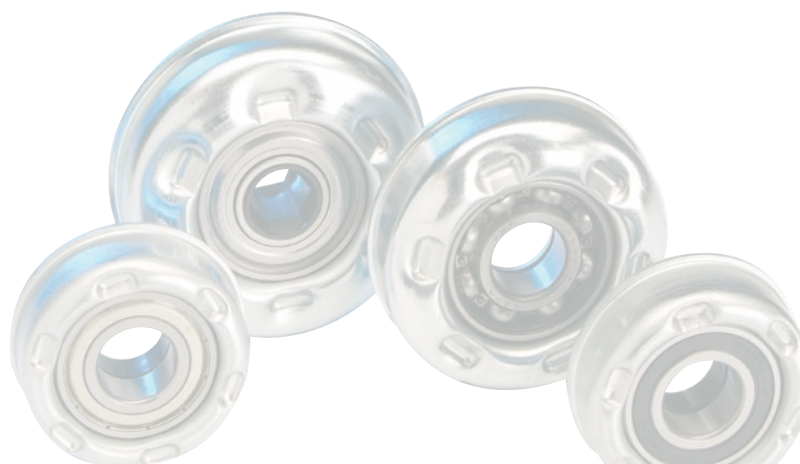
-



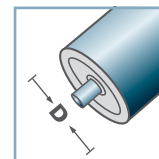
MTS-46			
Type	Di ±0.1	Da ±0.2	Load Rating C [daN]
MTS-63,5x2,9.46	58,1	61,5	200

Other dimensions on request!

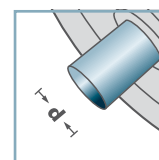
- ☛ Housing: Steel, Zinc plated
- ☛ Distance Bush: Plastic
- ☛ Bearing 6004



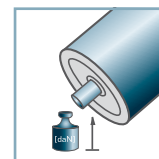
MTS-46



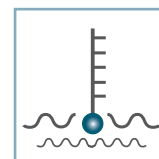
D [mm]
63,5



d [mm]
20



C [daN]
200



T [°C]
0° - 100°

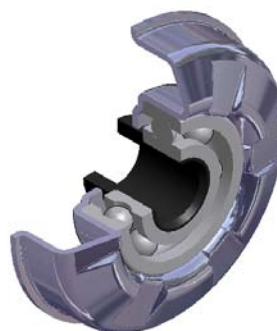
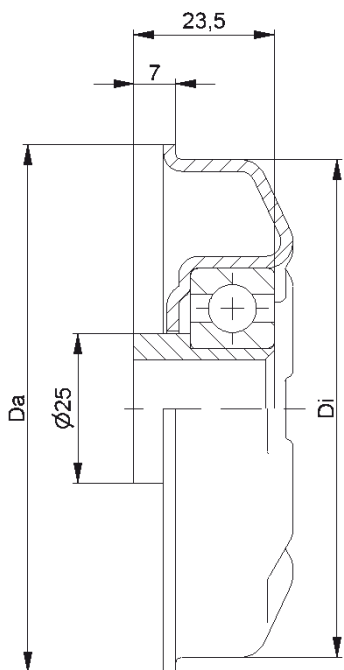


EP 2

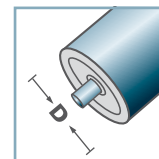


Carton [pcs.]

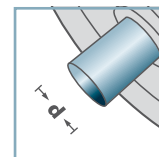
50



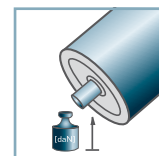
MTS-44



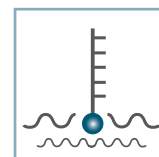
D [mm]
80 - 108



d [mm]
16; 17; SW14



C [daN]
250



T [°C]
0° - 100°



EP 2



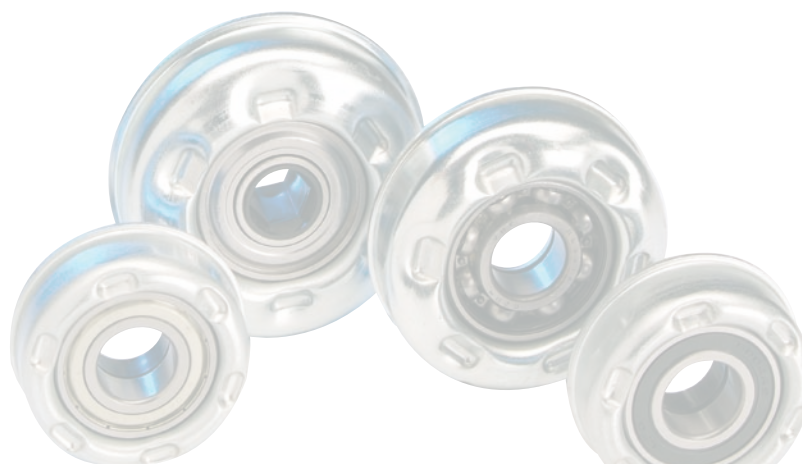
Carton [pcs.]

50

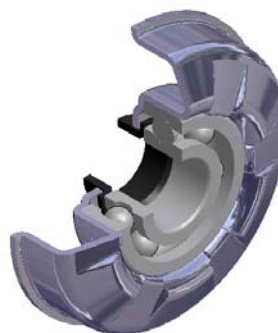
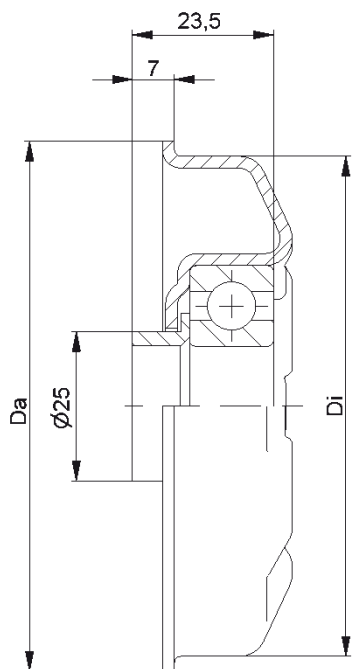
MTS-44			
Type	Di ±0.1	Da ±0.2	Load Rating C [daN]
MTS-80x2,0.44	76,5	79,5	250
MTS-80x3,0.44	74,5	79,5	250
MTS-89x3,0.44	83,5	88,5	250
MTS-89x3,25.44	83,0	88,5	250
MTS-108x3,25.44	102,0	107,5	250

Other dimensions on request!

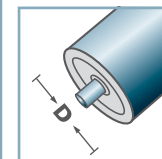
- ☛ Housing: Steel, Zinc plated
- ☛ Reducing Bush: Plastic
- ☛ Bearing 6204



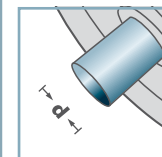
MTS



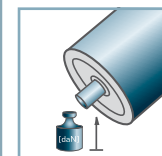
MTS-44



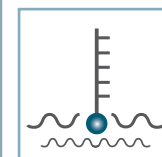
D [mm]
80 - 108



d [mm]
20



C [daN]
250



T [°C]
0° - 100°



EP 2



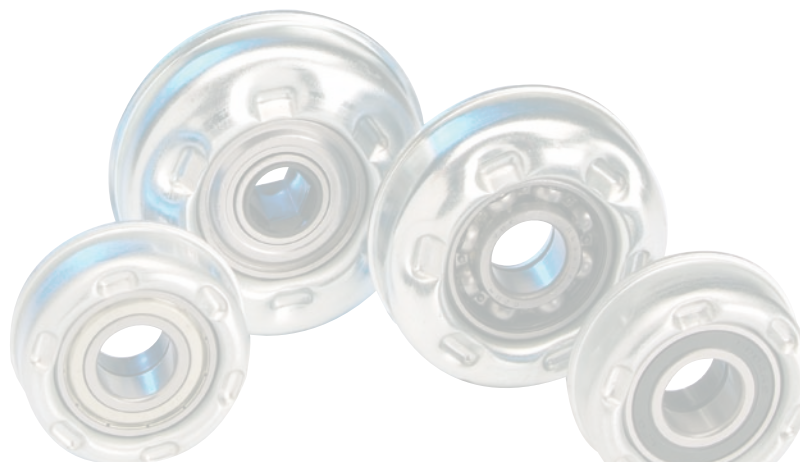
Carton [pcs.]

50

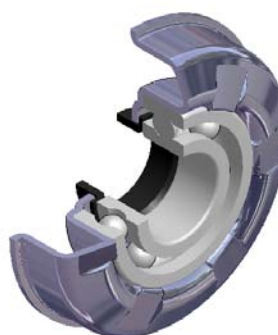
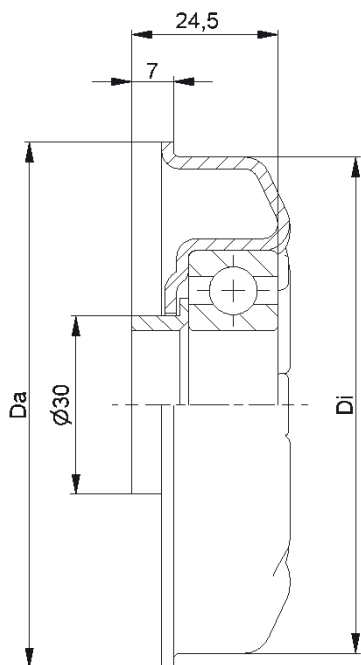
MTS-44			
Type	Di ±0.1	Da ±0.2	Load Rating C [daN]
MTS-80x2,0.44	76,5	79,5	250
MTS-80x3,0.44	74,5	79,5	250
MTS-89x3,0.44	83,5	88,5	250
MTS-89x3,25.44	83,0	88,5	250
MTS-108x3,25.44	102,0	107,5	250

Other dimensions on request!

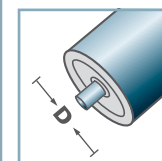
- ☛ Housing: Steel, Zinc plated
- ☛ Distance Bush: Plastic
- ☛ Bearing 6204



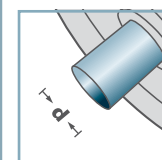
MTS



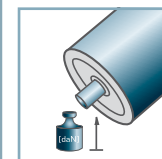
MTS-47



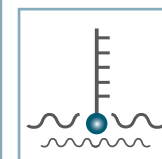
D [mm]
89 - 108



d [mm]
25



C [daN]
250



T [°C]
0° - 100°



EP 2



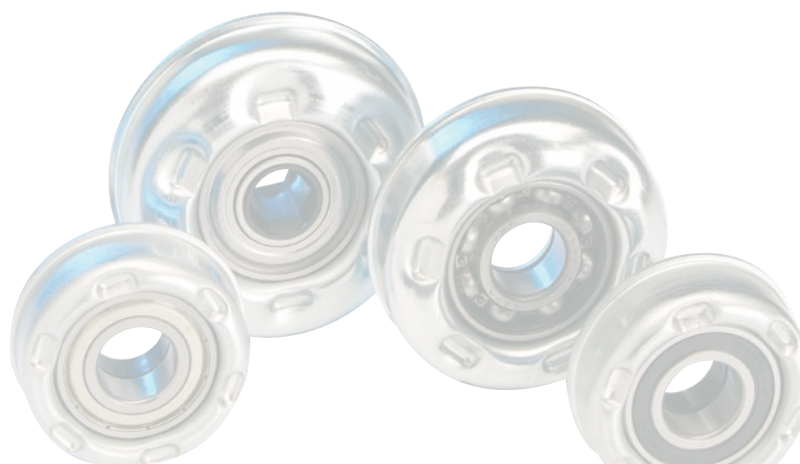
Carton [pcs.]

50

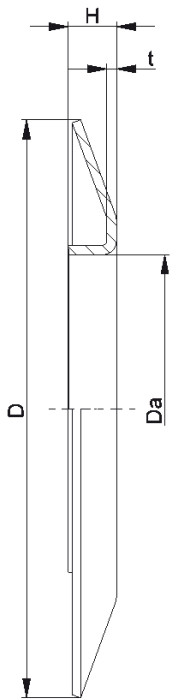
MTS-47			
Type	Di ±0.1	Da ±0.2	Load Rating C [daN]
MTS-89x3,0.47	83,5	88,5	250
MTS-108x3,25.47	102,0	107,5	250

Other dimensions on request!

- ☛ Housing: Steel, Zinc plated
- ☛ Distance Bush: Plastic
- ☛ Bearing 6205



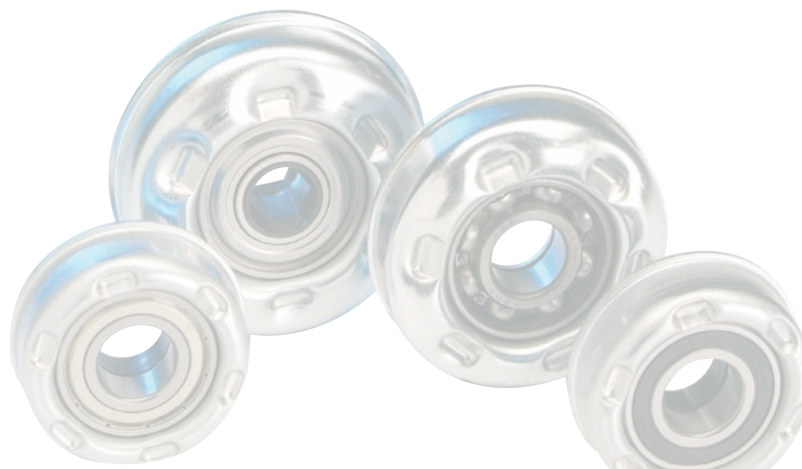
MTS



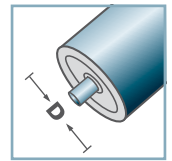
BS-				
Type	Da ±0.1	D -2	H ±0.5	t
BS-50-130	49,9	130	10	1,5
BS-60-130	59,9	130	10	1,5
BS-80-150	79,9	150	14	2,5
BS-89-150	88,9	150	14	2,5
BS-108-150	107,9	150	14	2,5

Other dimensions on request!

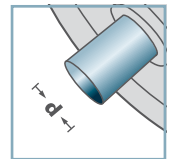
🔩 Wheel Flange: Steel



BS-



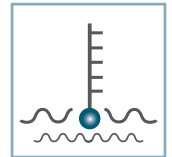
D [mm]
50 - 108



d [mm]
-



C [daN]
-



T [°C]
-

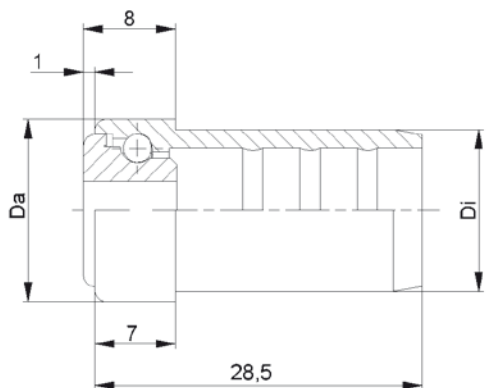


-



Carton [pcs.]

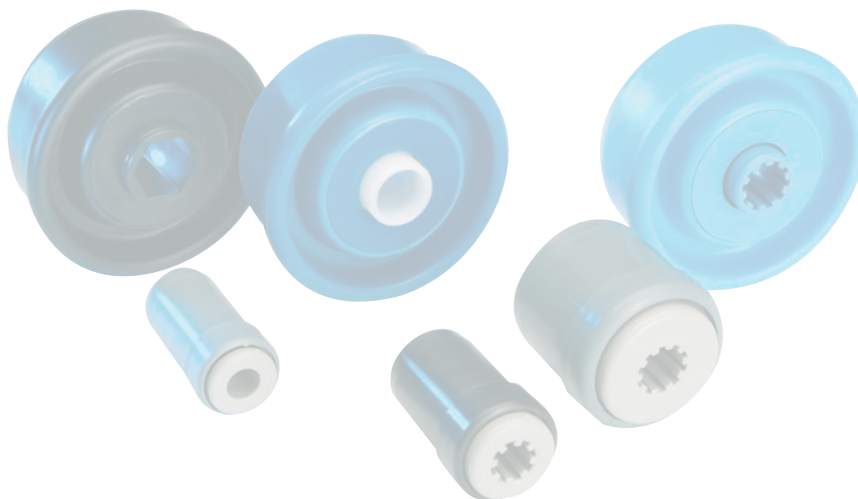




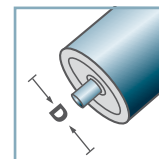
KTR-16.00/.01					
Type	Normal .00	Stainless .01	Di +0,15	Da	Load Rating C [daN]
KTR-16x1,0	x	x	14,1	15,9	3

Other dimensions on request!

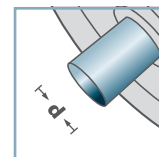
- ☛ Housing: Plastic
- ☛ Inner Race: Plastic
- ☛ Ball
 - ☛ 00: Steel
 - ☛ 01: 1.4034



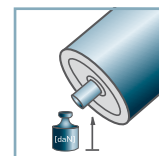
KTR-16.00
KTR-16.01



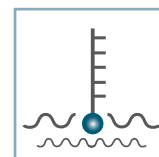
D [mm]
16



d [mm]
5; 6



C [daN]
3

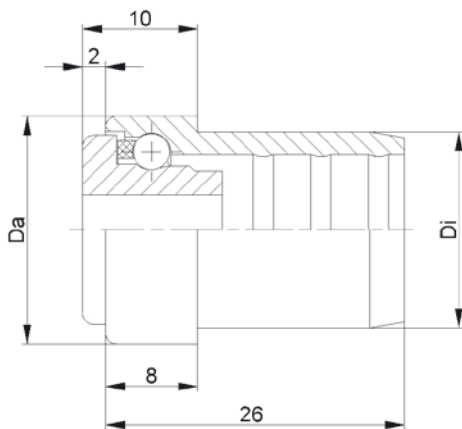


T [°C]
0° - 80°



Carton [pcs.]

500

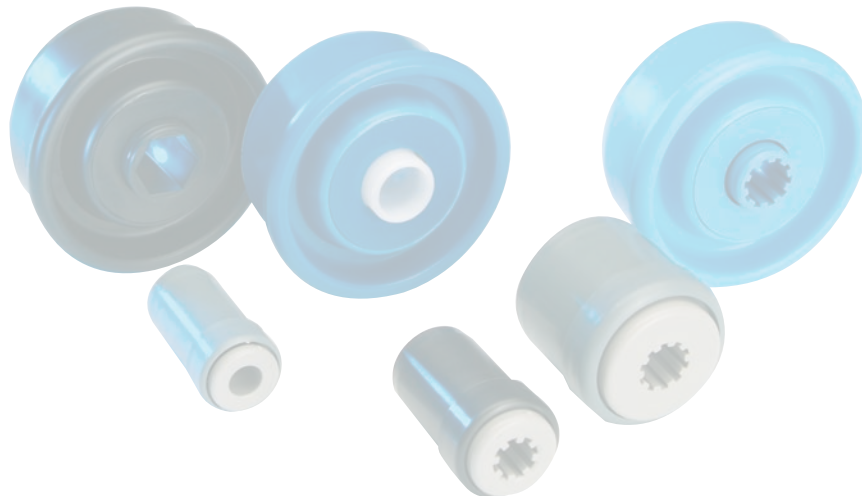


KTR-20.00/.01

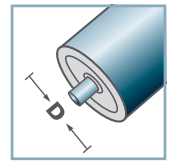
Type	Normal .00	Stainless .01	Di +0,15	Da	Load Rating C [daN]
KTR-20x1,0	x	x	18,1	19,9	5
KTR-20x1,5	x	x	17,1	19,9	5

Other dimensions on request!

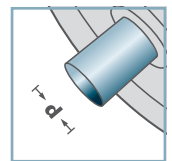
- ☛ Housing: Plastic
- ☛ Inner Race: Plastic
- ☛ Ball Cage: Plastic
- ☛ Ball
 - ☛ 00: Steel
 - ☛ 01: 1.4034



**KTR-20.00
KTR-20.01**



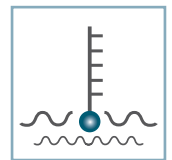
D [mm]
20



d [mm]
6; 8



C [daN]
5

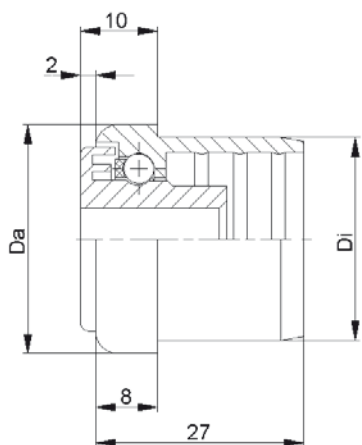


T [°C]
0° - 80°

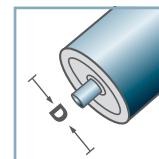


Carton [pcs.]

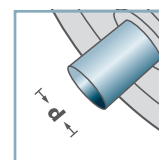
1000



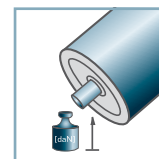
KTR-30.00
KTR-30.01



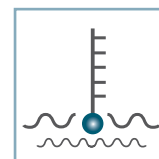
D [mm]
30



d [mm]
6; 8; 10



C [daN]
7



T [°C]
0° - 80°



KTR-30.00/.01					
Type	Normal .00	Stainless .01	Di +0,25	Da	Load Rating C [daN]
KTR-30x1,0	x	x	28,1	29,9	7
KTR-30x1,5	x	x	27,1	29,9	7
KTR-30x1,8	x	x	26,5	29,9	7
KTR-30x2,0	x	x	26,35	29,9	7

Other dimensions on request!

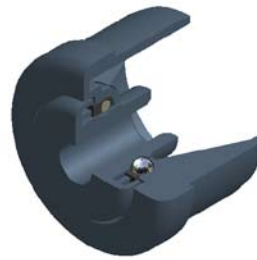
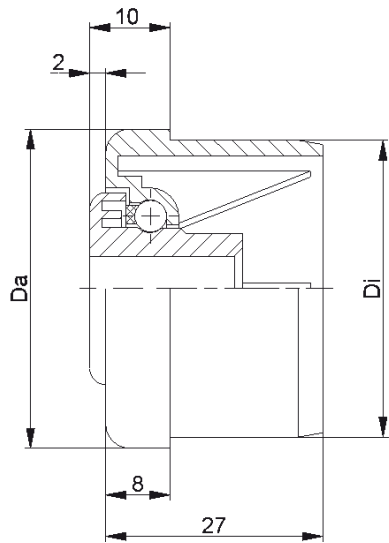
- ☪ Housing: Plastic
- ☪ Inner Race: Plastic
- ☪ Ball Cage: Plastic
- ☪ Ball
 - ☪ 00: Steel
 - ☪ 01: 1.4034



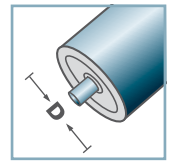
Carton [pcs.]

250

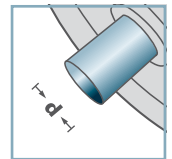
KTR



KTR-40.00
KTR-40.01



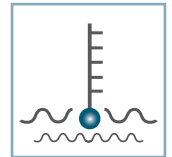
D [mm]
40



d [mm]
6; 8; 10



C [daN]
7



T [°C]
0° - 80°

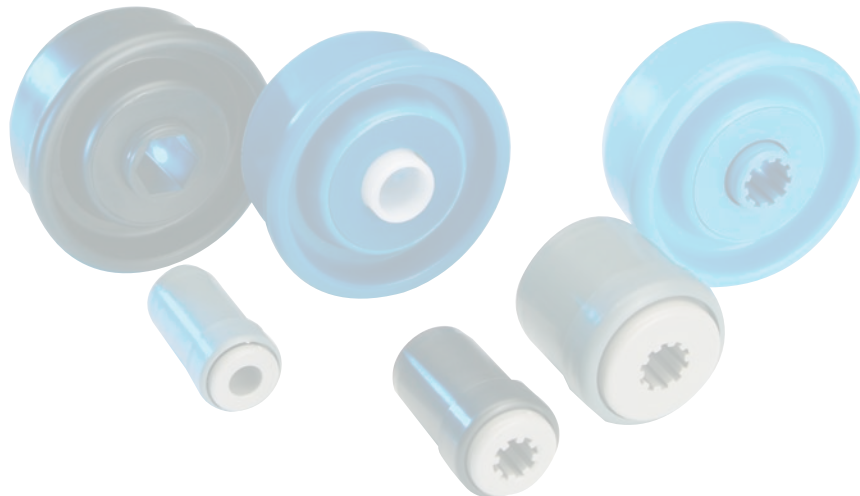


KTR-40.00/.01

Type	Normal .00	Stainless .01	Di +0,25	Da	Load Rating C [daN]
KTR-40x1,5	x	x	37,1	39,9	7
KTR-40x2,3	x	x	35,5	39,9	7

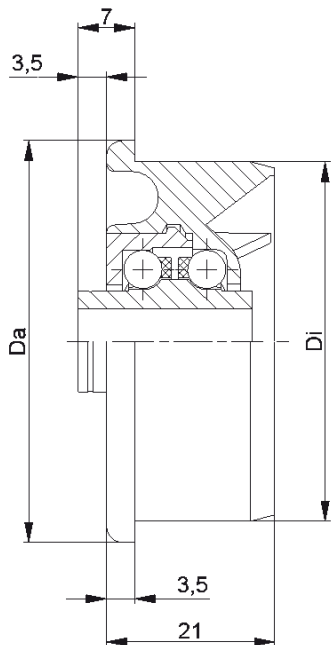
Other dimensions on request!

- ☛ Housing: Plastic
- ☛ Inner Race: Plastic
- ☛ Ball Cage: Plastic
- ☛ Ball
 - ☛ 00: Steel
 - ☛ 01: 1.4034



Carton [pcs.]

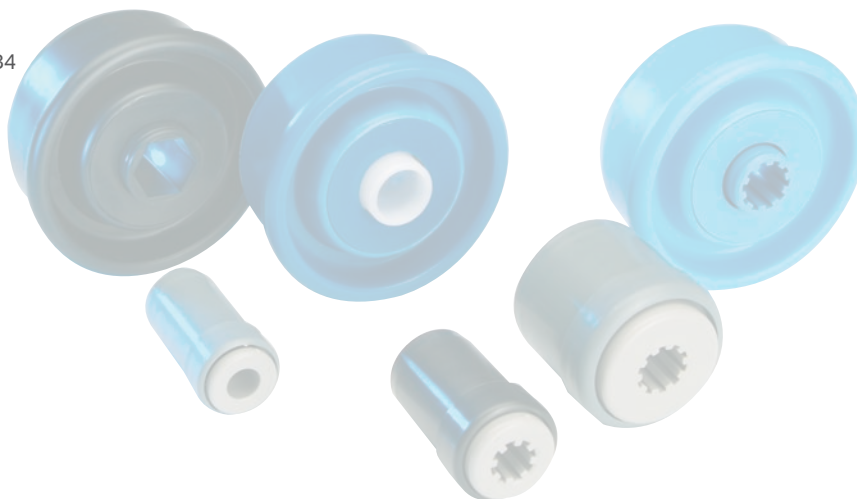
250



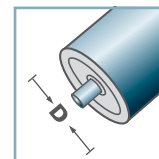
KTR-02/03					
Type	Normal .02	Stainless .03	Di +0,2	Da	Load Rating C [daN]
KTR-50x1,5	x	x	47,3	49,9	10
KTR-50x2,0	x	x	46,3	49,9	10
KTR-50x2,8	x	x	44,6	49,9	10

Other dimensions on request!

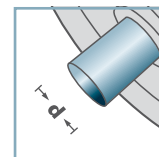
- ☉ Housing: Plastic
- ☉ Inner Race: Plastic
- ☉ Bearing Cap: Plastic
- ☉ Ball Cage: Plastic
- ☉ Ball
 - ☉ 02: Steel
 - ☉ 03: 1.4034



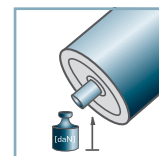
**KTR-02
KTR-03**



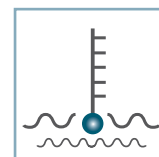
D [mm]
50



d [mm]
8; 10



C [daN]
10

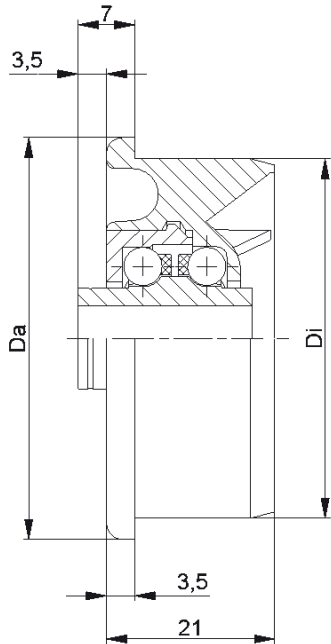


T [°C]
0° - 80°



Carton [pcs.]

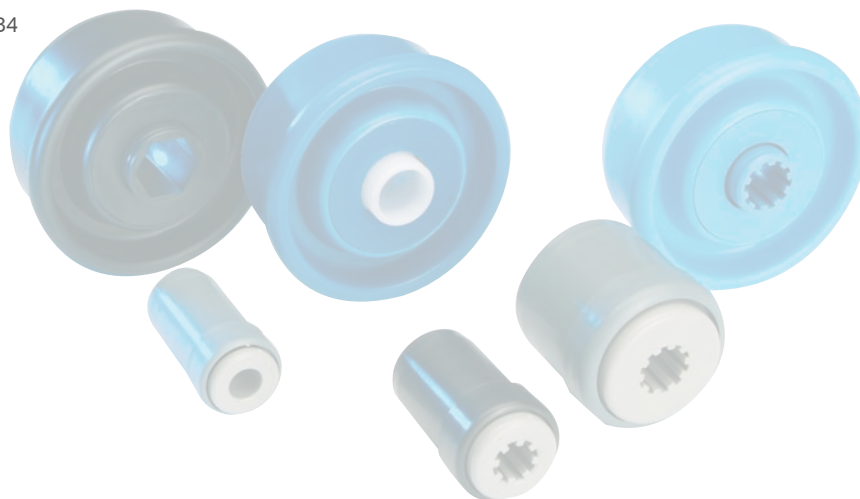
50x1,5: 250
50x2,0: 300
50x2,8: 250



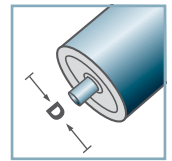
KTR-02/03					
Type	Normal .02	Stainless .03	Di +0,2	Da	Load Rating C [daN]
KTR-50x1,5	x	x	47,3	49,9	10
KTR-50x2,8	x	x	44,6	49,9	10

Other dimensions on request!

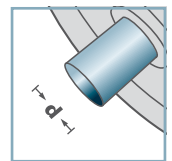
- ☛ Housing: Plastic
- ☛ Inner Race: Plastic
- ☛ Bearing Cap: Plastic
- ☛ Ball Cage: Plastic
- ☛ Ball
 - ☛ 02: Steel
 - ☛ 03: 1.4034



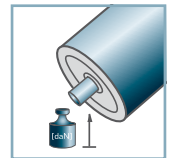
**KTR-02
KTR-03**



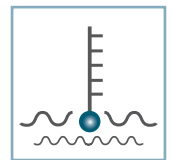
D [mm]
50



d [mm]
12; SW11



C [daN]
10

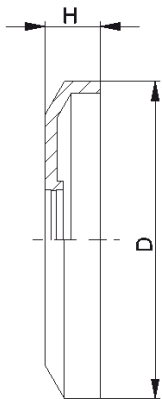


T [°C]
0° - 80°



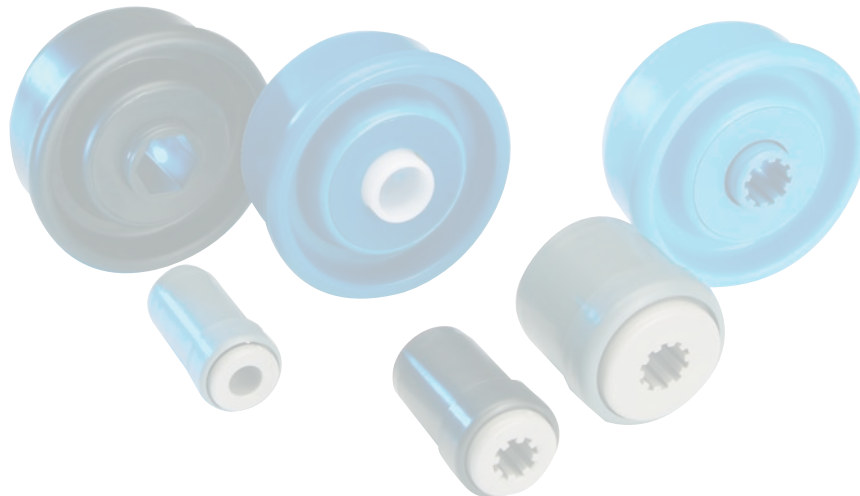
Carton [pcs.]

250

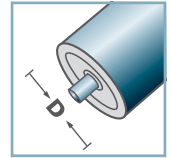


DK-KTR		
Type	D	H
DK-KTR-02	40,5	7
Other dimensions on request!		

☞ Seal Bonnet: Plastic

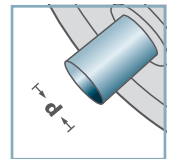


DK-KTR-02



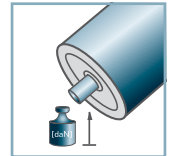
D [mm]

-



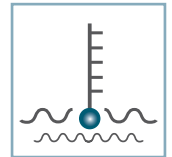
d [mm]

-



C [daN]

-



T [°C]

0° - 80°

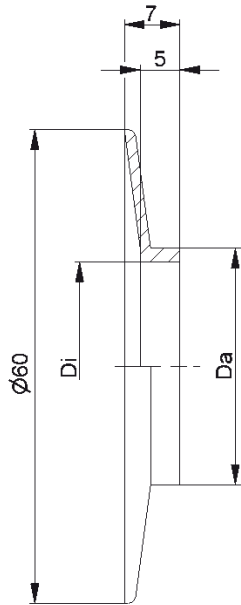


-



Carton [pcs.]

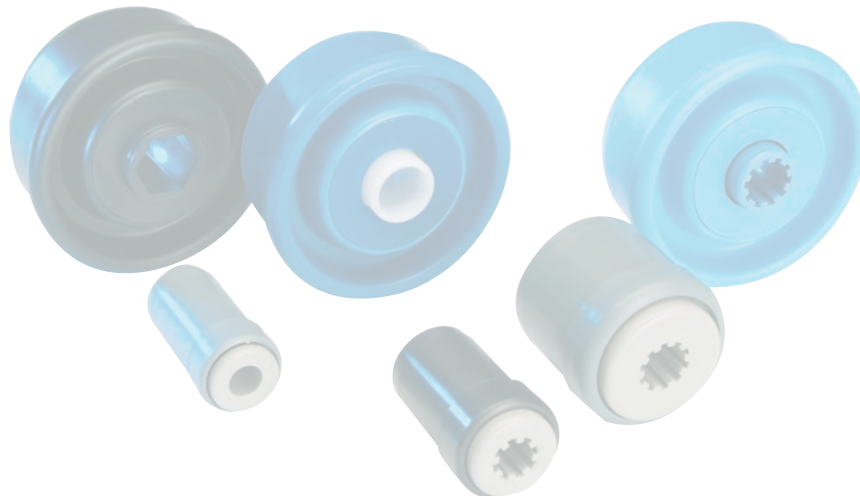
-



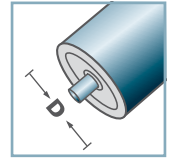
BS-		
Type	Di	Da
BS-30x1,0	28,1	29,9
BS-30x1,8	26,5	29,9
BS-40x1,5	37,1	39,9
BS-40x2,3	35,5	39,9

Other dimensions on request!

C Wheel Flange: Plastic

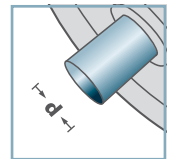


BS-



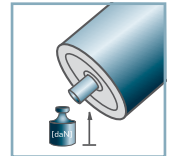
D [mm]

-



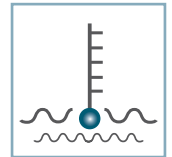
d [mm]

-



C [daN]

-



T [°C]

0° - 80°

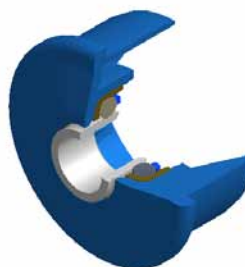
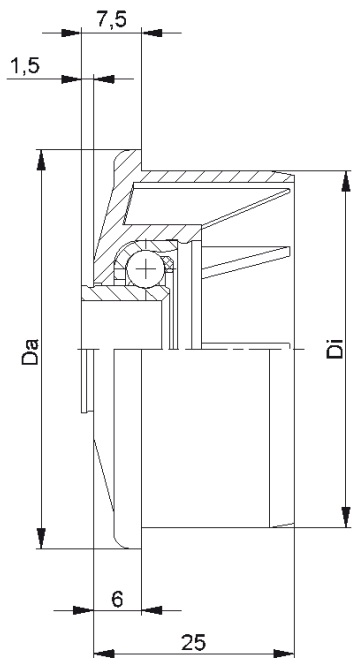


-



Carton [pcs.]

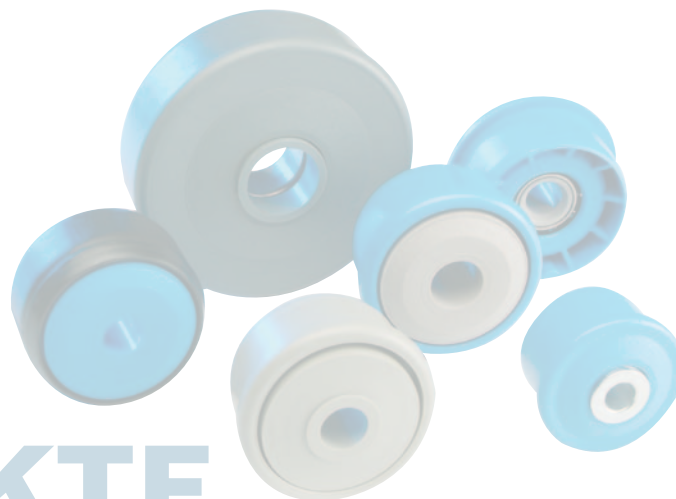
-



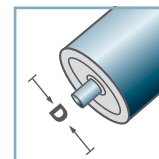
KTR-25			
Type	Di +0,2	Da	Load Rating C [daN]
KTR-40x3,0.25	34,3	39,9	50
KTR-50x1,5.25	47,3	49,9	50
KTR-50x2,8.25	44,6	49,9	50

Other dimensions on request!

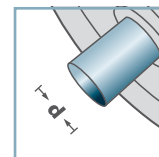
- ☛ Housing: Plastic
- ☛ Bearing RL-25
 - ☛ Bearing Shell: Steel, Hardened
 - ☛ Inner Race: Steel, Hardened, Zinc plated
 - ☛ Ball Cage: Plastic
 - ☛ Ball: Steel



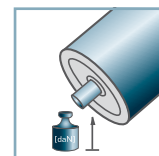
KTR-25



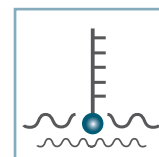
D [mm]
40 - 50



d [mm]
8; 10; 12



C [daN]
50



T [°C]
0° - 80°



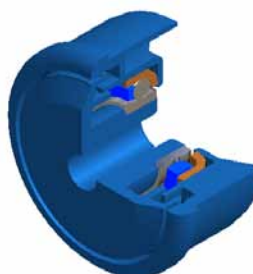
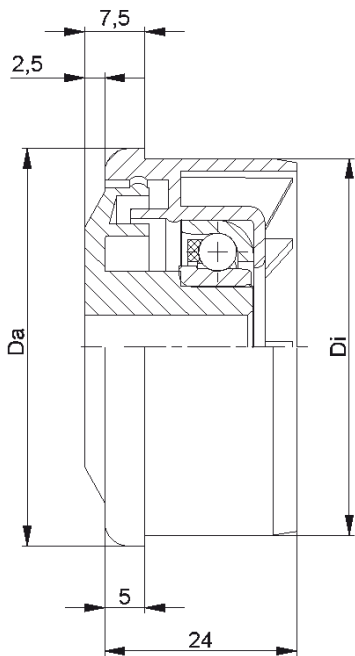
Vactra No. 2



Carton [pcs.]

ø40: 400
ø50: 250

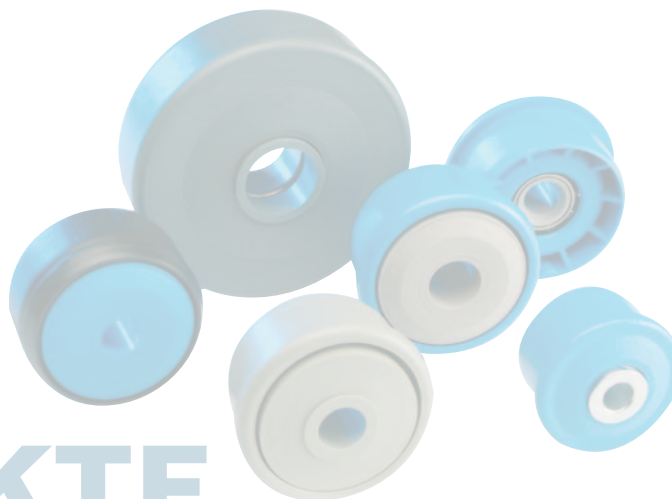
KTR/KTE



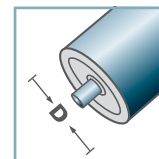
KTR-30			
Type	Di +0,2	Da	Load Rating C [daN]
KTR-50x1,5.30	47,3	49,9	80
KTR-50x2,8.30	44,6	49,9	80
KTR-60x1,5.30	57,3	59,9	80

Other dimensions on request!

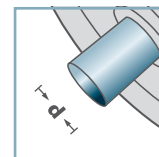
- ☛ Housing: Plastic
- ☛ Single Labyrinth Seal: Plastic
- ☛ Bearing RL-30
 - ☛ Bearing Shell: Steel, Hardened
 - ☛ Inner Race: Steel, Hardened
 - ☛ Ball Cage: Plastic
 - ☛ Ball: Steel



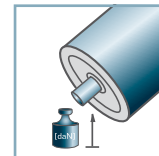
KTR-30



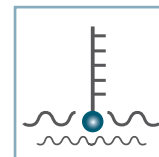
D [mm]
50 - 60



d [mm]
10; 12; 14; 15;
SW11



C [daN]
80



T [°C]
0° - 80°



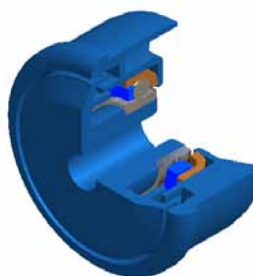
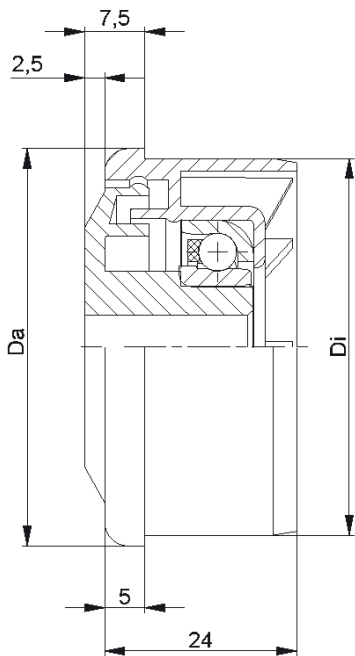
Vactra No. 2



Carton [pcs.]

ø50: 250
ø60: 200

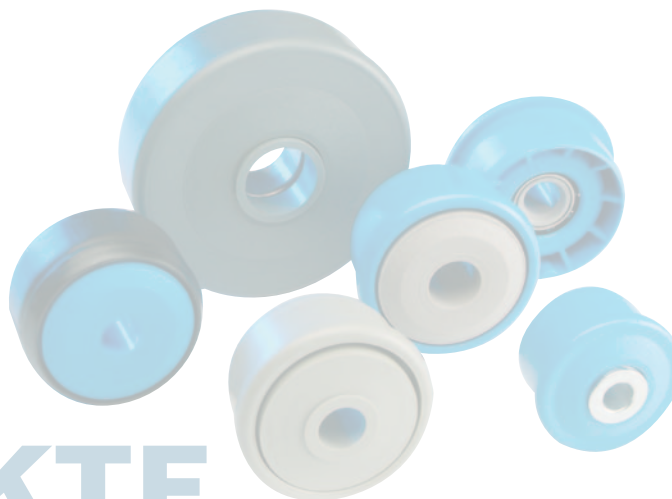
KTR/KTE



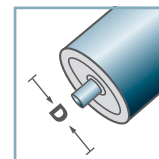
KTR-31			
Type	Di +0,2	Da	Load Rating C [daN]
KTR-50x1,5.31	47,3	49,9	25
KTR-50x2,8.31	44,6	49,9	25
KTR-60x1,5.31	57,3	59,9	25

Other dimensions on request!

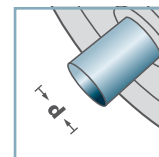
- ☛ Housing: Plastic
- ☛ Single Labyrinth Seal: Plastic
- ☛ Bearing RL-31
 - ☛ Bearing Shell: 1.4301
 - ☛ Inner Race: 1.4305
 - ☛ Ball Cage: Plastic
 - ☛ Ball: 1.4301



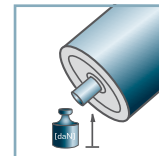
KTR-31



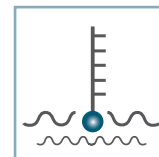
D [mm]
50 - 60



d [mm]
10; 12; 14; 15;
SW11



C [daN]
25



T [°C]
0° - 80°



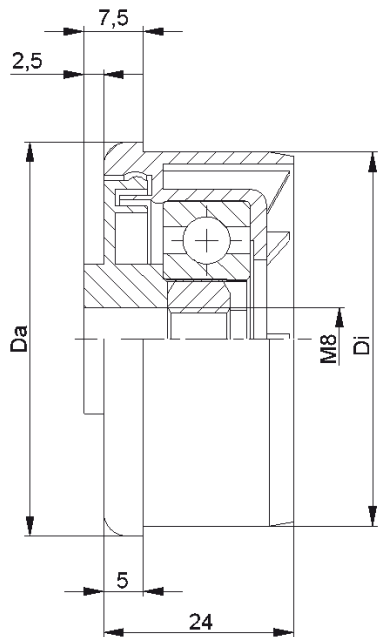
Vactra No. 2



Carton [pcs.]

ø50: 250
ø60: 200

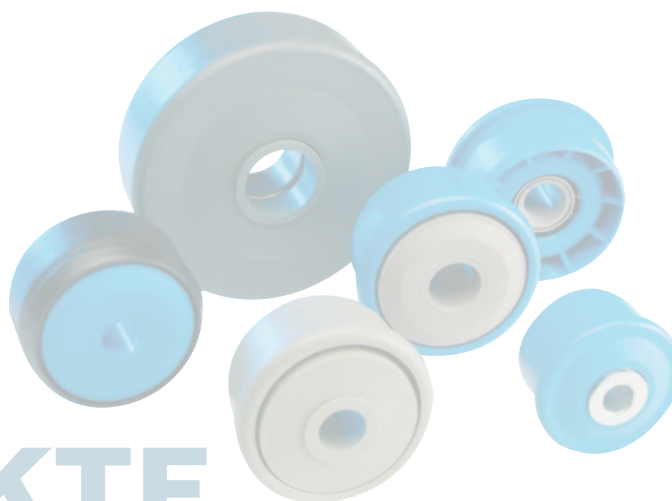
KTR/KTE



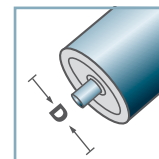
KTR-40.M8			
Type	Di +0,2	Da	Load Rating C [daN]
KTR-50x1,5.40	47,3	49,9	80
KTR-60x1,5.40	57,3	59,9	80

Other dimensions on request!

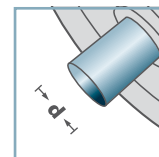
- ☛ Housing: Plastic
- ☛ Single Labyrinth Seal: Plastic
- ☛ Bearing 6202
- ☛ Hexagon Nut



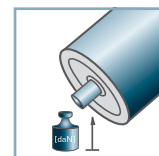
KTR-40.M8



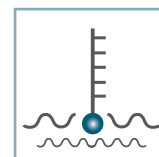
D [mm]
50 - 60



d [mm]
M8



C [daN]
80



T [°C]
0° - 80°



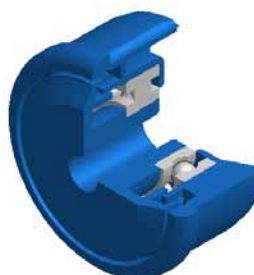
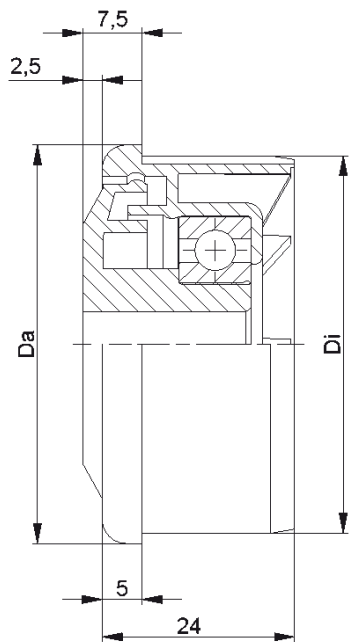
EP 2



Carton [pcs.]

ø50: 250
ø60: 100

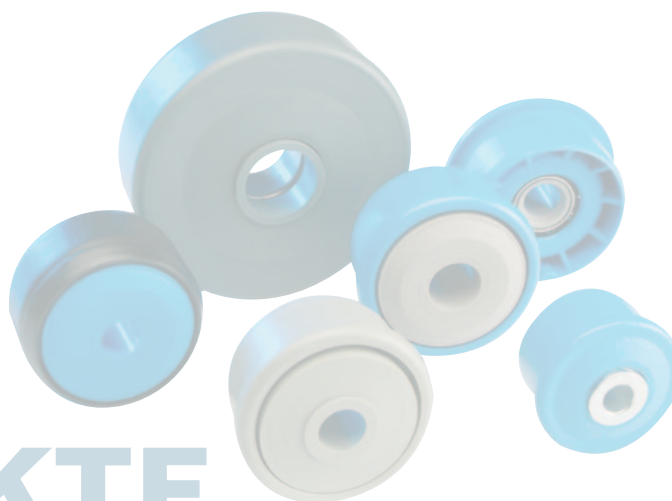
KTR/KTE



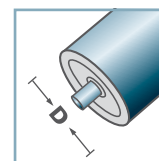
KTR-42			
Type	Di +0,25	Da	Load Rating C [daN]
KTR-40x1,5.42	37,2	39,9	80
KTR-50x1,5.42	47,3	49,9	80
KTR-50x2,0.42	46,3	49,9	80
KTR-50x2,8.42	44,6	49,9	80
KTR-60x1,5.42	57,3	59,9	80
KTR-60x2,0.42	56,3	59,9	80

Other dimensions on request!

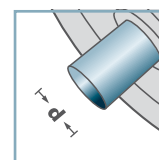
- ☑ Housing: Plastic
- ☑ Single Labyrinth Seal: Plastic
- ☑ Bearing 6002



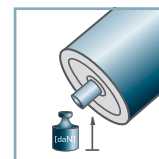
KTR-42



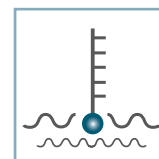
D [mm]
40 - 60



d [mm]
10; 12; 14; 15;
SW11



C [daN]
80



T [°C]
0° - 80°



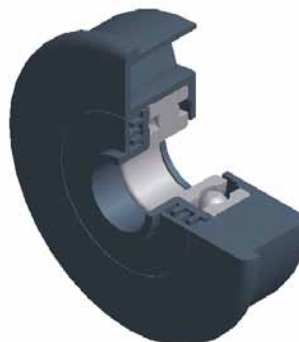
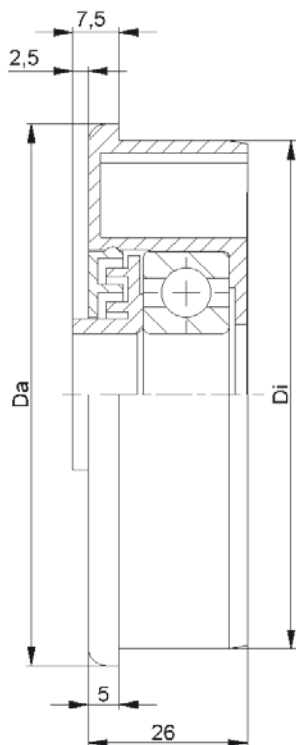
EP 2



Carton [pcs.]

ø50: 250
ø60: 100

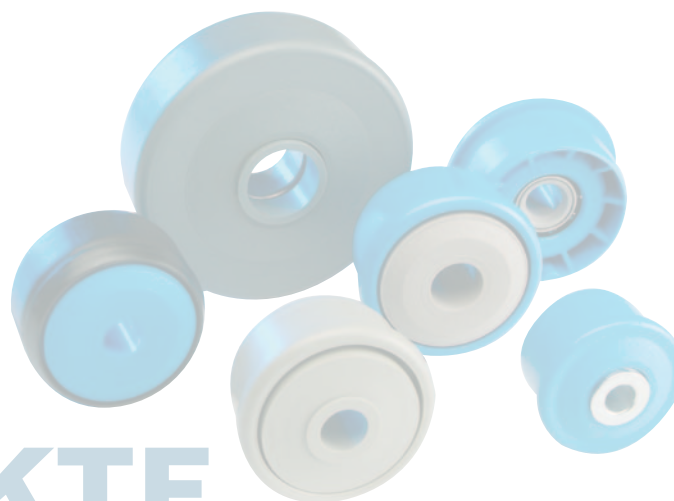
KTR/KTE



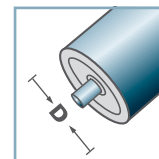
KTR-44			
Type	Di +0,2	Da	Load Rating C [daN]
KTR-89x3,0.44	83,3	88,9	150

Other dimensions on request!

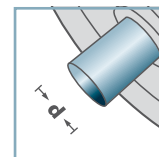
- ☛ Housing: Plastic
- ☛ Inner Labyrinth Seal: Plastic
- ☛ Outer Labyrinth Seal: Plastic
- ☛ Bearing 6204



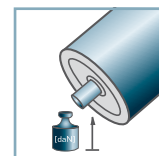
KTR-44



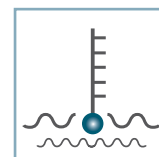
D [mm]
89



d [mm]
20



C [daN]
150



T [°C]
0° - 80°



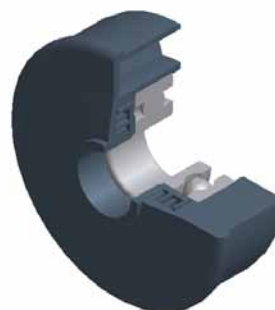
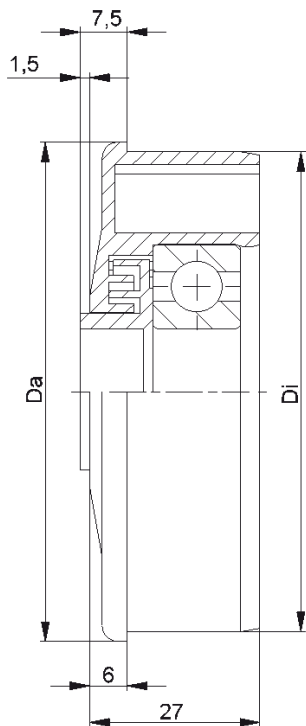
EP 2



Carton [pcs.]

80

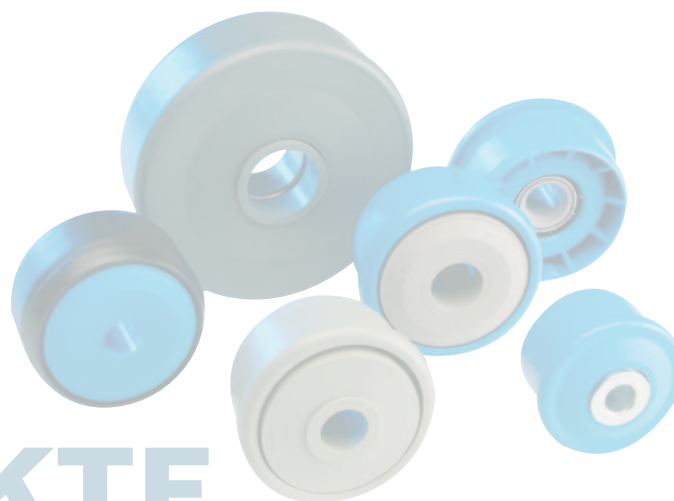
KTR/KTE



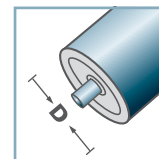
KTR-43/44			
Type	Di +0,2	Da	Load Rating C [daN]
KTR-63,5x2,9.43/.44	58,0	63,4	150
KTR-80x2,0.43/.44	76,4	79,9	150

Other dimensions on request!

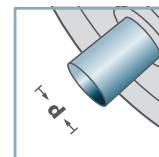
- ☛ Housing: Plastic
- ☛ Multiple Labyrinth Seal: Plastic
- ☛ Bearing 6303/6204



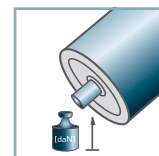
KTR-43/44



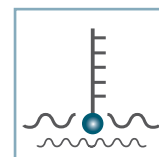
D [mm]
63,5 - 80



d [mm]
6303: 17
6204: 20



C [daN]
150



T [°C]
0° - 80°



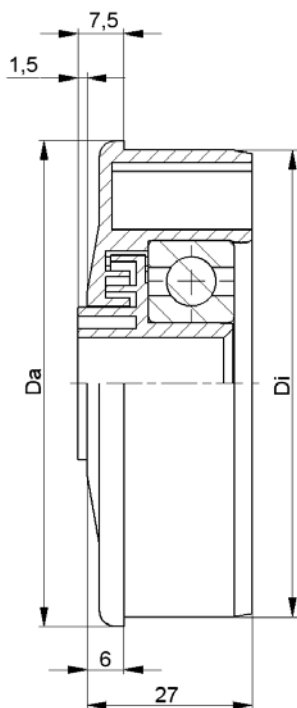
EP 2



Carton [pcs.]

100

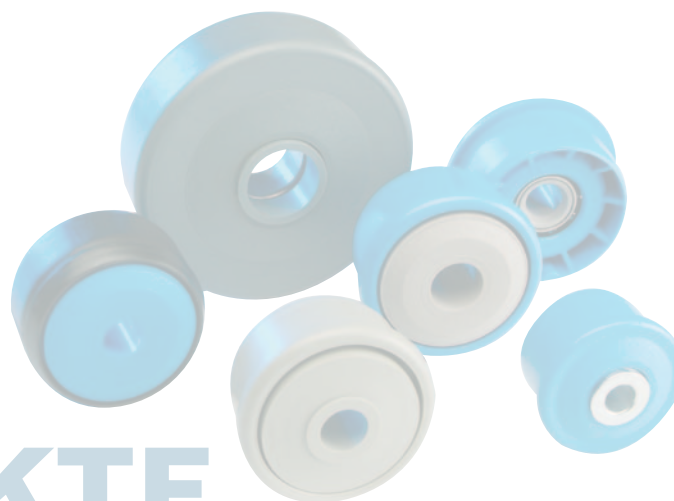
KTR/KTE



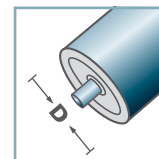
KTR-43/44			
Type	Di +0,2	Da	Load Rating C [daN]
KTR-63,5x2,9.43/.44	58,0	63,4	150
KTR-80x2,0.43/.44	76,4	79,9	150

Other dimensions on request!

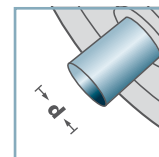
- ☛ Housing: Plastic
- ☛ Multiple Labyrinth Seal: Plastic
- ☛ Bearing 6303/6204



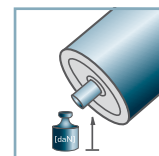
KTR-43/44



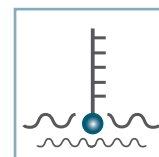
D [mm]
63,5 - 80



d [mm]
6303: 12
6204: 15



C [daN]
150



T [°C]
0° - 80°



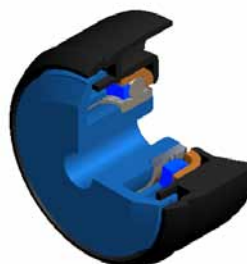
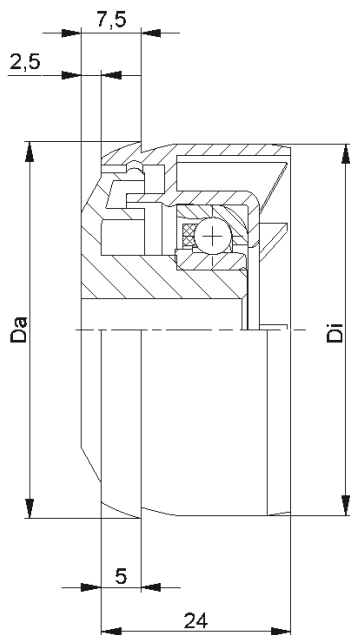
EP 2



Carton [pcs.]

100

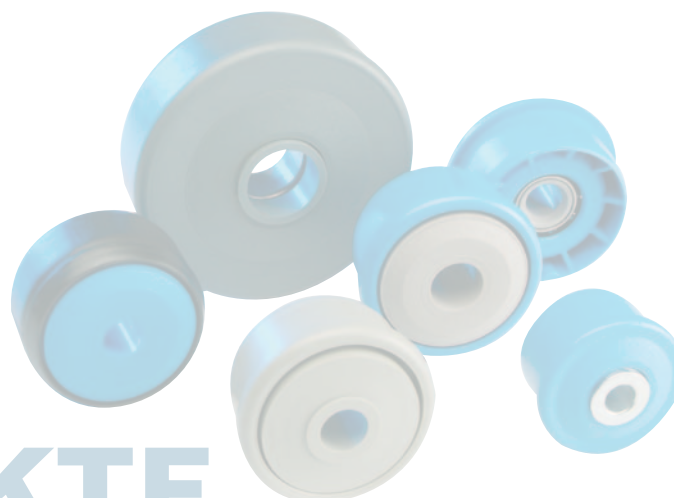
KTR/KTE



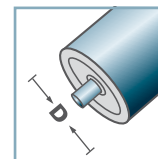
KTE-30			
Type	Di +0,3	Da	Load Rating C [daN]
KTE-50x1,5.30	47,1	47,9	80

Other dimensions on request!

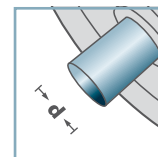
- ☛ Housing: Plastic
- ☛ Single Labyrinth Seal: Plastic
- ☛ Bearing RL-30
 - ☛ Bearing Shell: Steel, Hardened
 - ☛ Inner Race: Steel, Hardened
 - ☛ Cage: Plastic
 - ☛ Ball: Steel



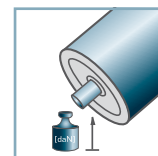
KTE-30



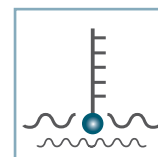
D [mm]
50



d [mm]
10; 12; 14; 15;
SW11



C [daN]
80



T [°C]
0° - 80°



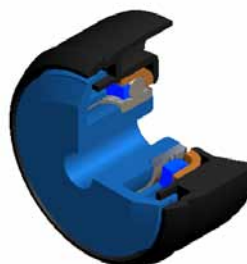
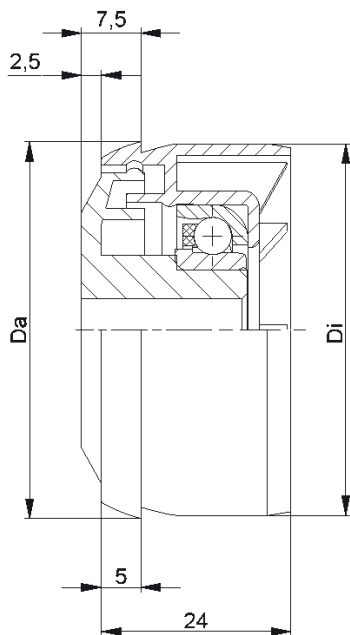
Vactra No. 2



Carton [pcs.]

250

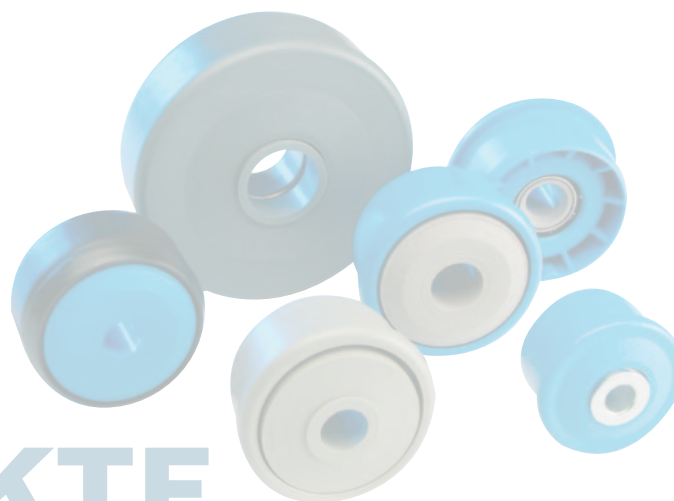
KTR/KTE



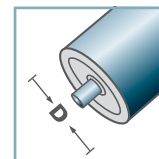
KTE-31			
Type	Di +0,3	Da	Load Rating C [daN]
KTE-50x1,5.31	47,1	47,9	25

Other dimensions on request!

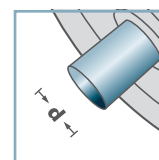
- ☛ Housing: Plastic
- ☛ Single Labyrinth Seal: Plastic
- ☛ Bearing RL-31
 - ☛ Bearing Shell: 1.4301
 - ☛ Inner Race: 1.4305
 - ☛ Cage: Plastic
 - ☛ Ball: 1.4301



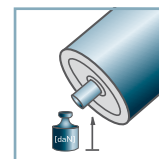
KTE-31



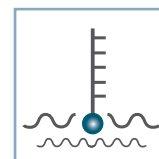
D [mm]
50



d [mm]
10; 12; 14; 15;
SW11



C [daN]
25



T [°C]
0° - 80°



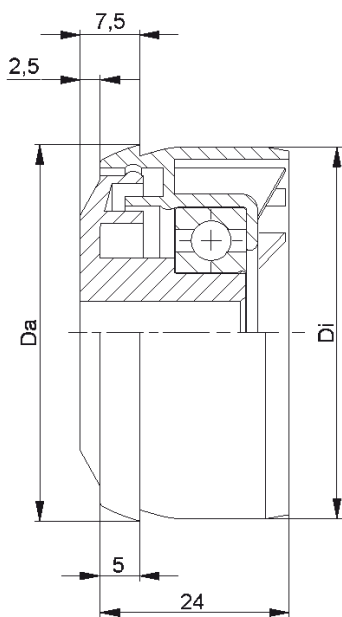
Vactra No. 2



Carton [pcs.]

250

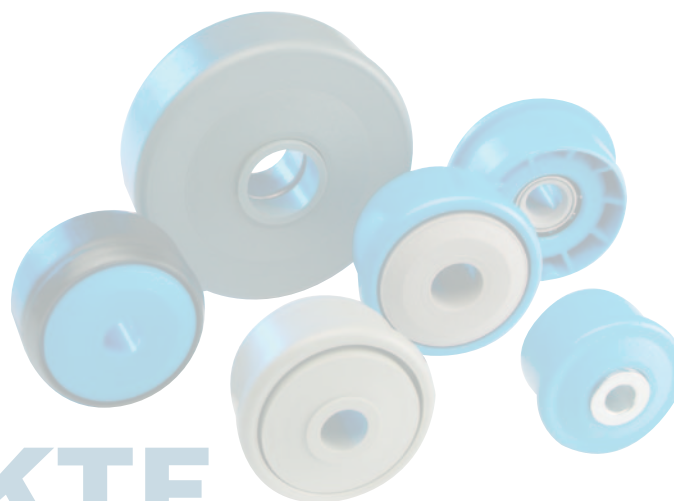
KTR/KTE



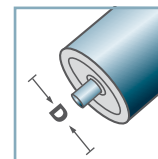
KTE-42			
Type	Di +0,3	Da	Load Rating C [daN]
KTE-50x1,5.42	47,1	47,9	80

Other dimensions on request!

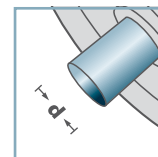
- ☛ Housing: Plastic
- ☛ Single Labyrinth Seal: Plastic
- ☛ Bearing 6002



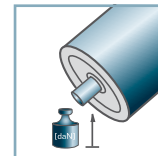
KTE-42



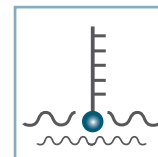
D [mm]
50



d [mm]
10; 12; 14; 15;
SW11



C [daN]
80



T [°C]
0° - 80°



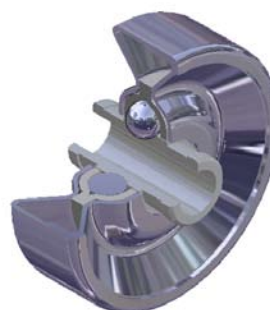
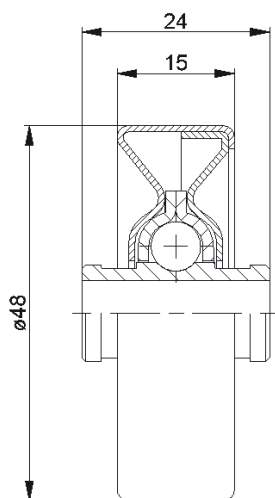
EP 2



Carton [pcs.]

250

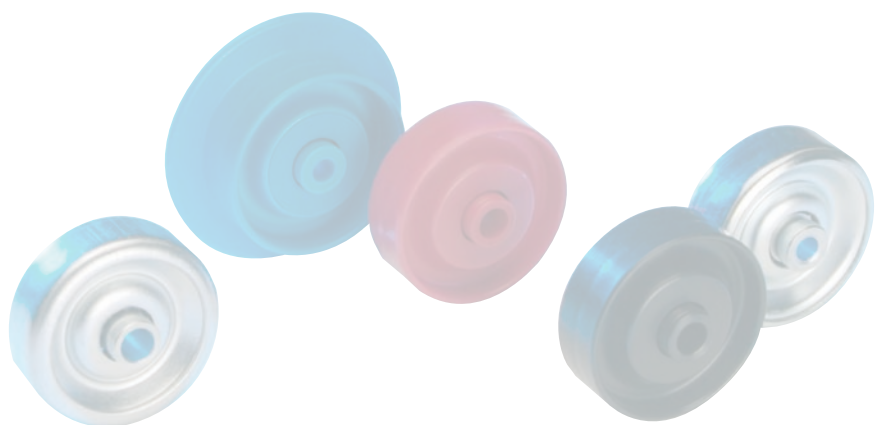
KTR/KTE



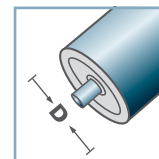
SLR	
Type	Load Rating C [daN]
SLR-480	20

Other dimensions on request!

☛ Skate Wheel: Steel

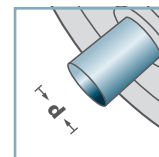


SLR-



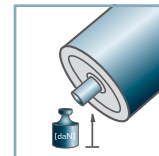
D [mm]

-



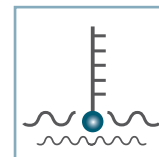
d [mm]

6; 8



C [daN]

20



T [°C]

-30° - 140°



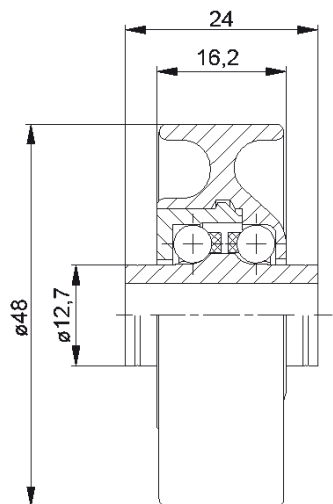
-



Carton [pcs.]

250

KLR/SLR/SR

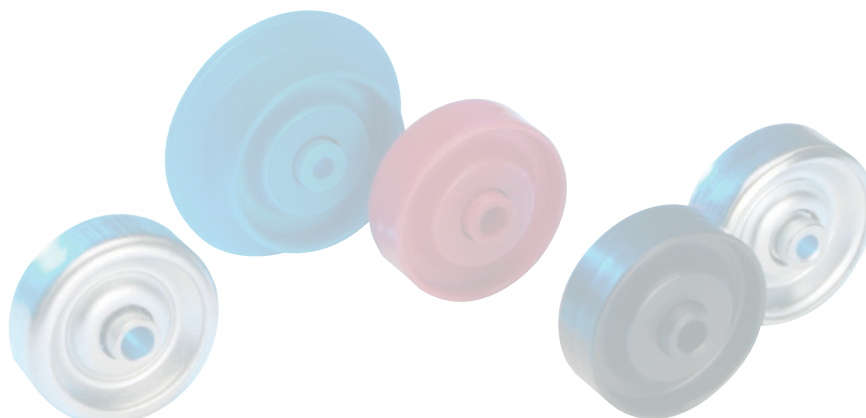


KLR-02/03

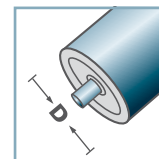
Type	Normal .02	Stainless .03	Load Rating C [daN]
KLR-480	x	x	10

Other dimensions on request!

- ☛ Housing: Plastic
- ☛ Inner Race: Plastic
- ☛ Bearing Cap: Plastic
- ☛ Ball Cage: Plastic
- ☛ Ball
 - ☛ 02: Steel
 - ☛ 03: 1.4034

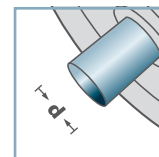


**KLR-02
KLR-03**



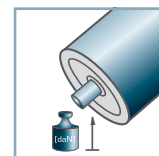
D [mm]

-



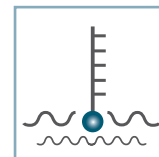
d [mm]

6; 8



C [daN]

10



T [°C]

0° - 80°



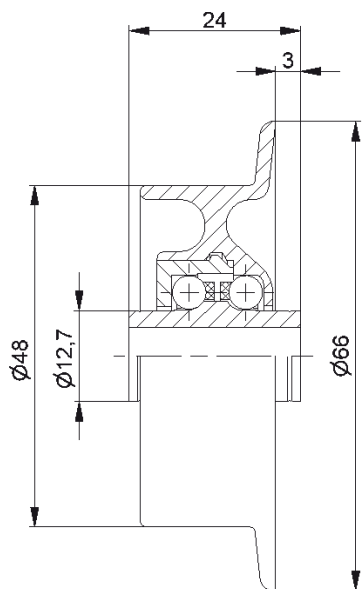
-



Carton [pcs.]

250

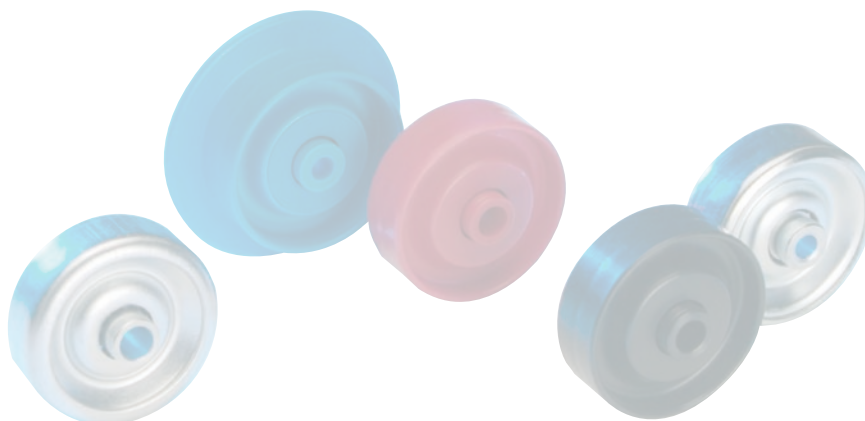
KLR/SLR/SR



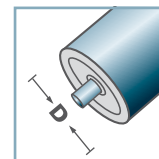
SR-02/03			
Type	Normal .02	Stainless .03	Load Rating C [daN]
SR-480	x	x	10

Other dimensions on request!

- ☛ Housing: Plastic
- ☛ Inner Race: Plastic
- ☛ Bearing Cap: Plastic
- ☛ Ball Cage: Plastic
- ☛ Ball
 - ☛ 02: Steel
 - ☛ 03: 1.4034

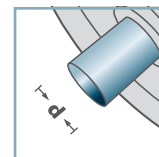


SR-02
SR-03



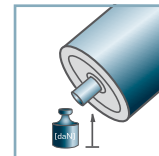
D [mm]

-



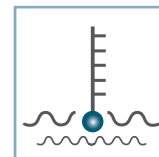
d [mm]

6; 8



C [daN]

10



T [°C]

0° - 80°



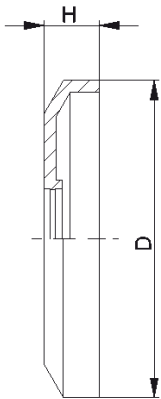
-



Carton [pcs.]

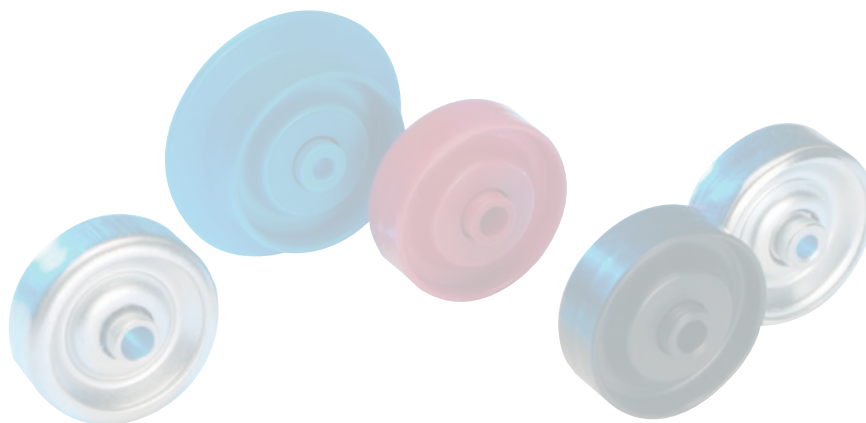
250

KLR/SLR/SR

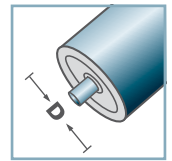


DK-KLR		
Type	D	H
DK-KLR-02	40,5	7
Other dimensions on request!		

☞ Seal Bonnet: Plastic

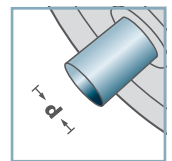


DK-KLR-02



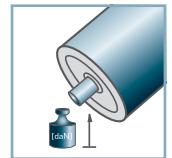
D [mm]

-



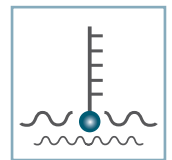
d [mm]

-



C [daN]

-



T [°C]

0° - 80°



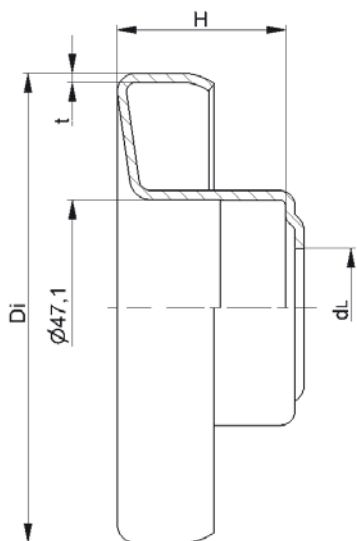
-



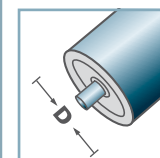
Carton [pcs.]



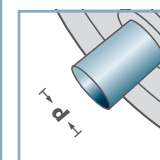
KLR/SLR/SR



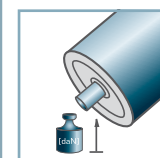
LH-6204



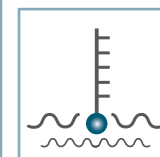
D [mm]
63,5 - 133



d [mm]
20



C [daN]
-



T [°C]
-



6204:
D47, d20, H14

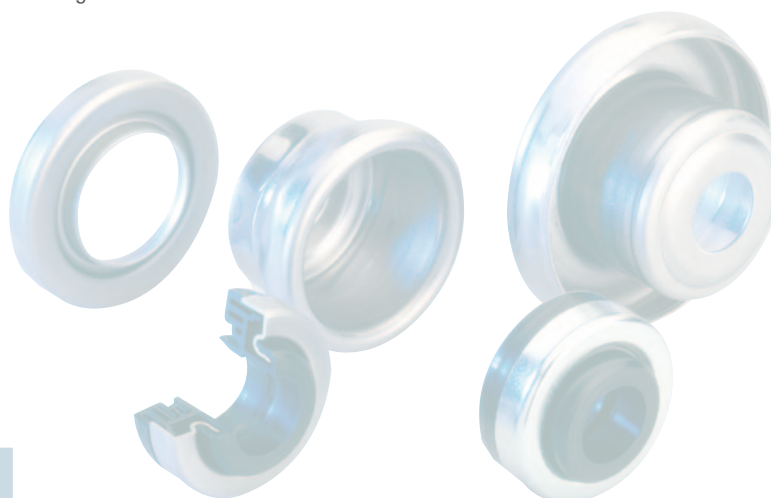


Skeleton Container [pcs.]
 ø63,5: 6000
 ø80: 3500
 ø89: 3100
 ø108: 2100
 ø133: 1150

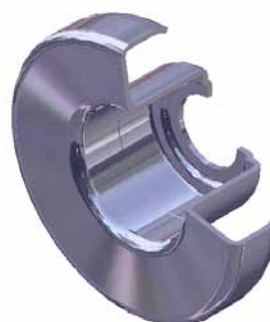
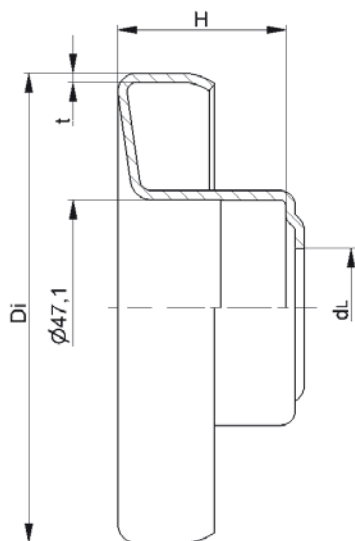
LH-6204				
Type	Di	H	dL	t
LH-63,5x1,75/6204	60,5	33	26	1,5
LH-80x2,0/6204	76,5	36,5	26	2,0
LH-80x3,0/6204	74,5	36,5	26	2,0
LH-89x3,0/6204	83,5	36,5	26	2,0
LH-108x2,5/6204	103,3	36,5	26	2,0
LH-108x3,25/6204	102,1	36,5	26	2,0
LH-133x3,6/6204	126,3	36,5	26	2,5

Other dimensions on request!

C Retainer for Standard Bearings: Steel



LH/FL

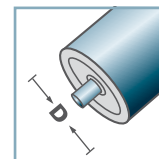


LH-6204 N				
Type	Di	H	dL	t
LH-63,5x1,75/6204N	60,5	31,8	21	1,5
LH-89x3,0/6204N *	83,7	33,5	21	1,5
LH-108x3,25/6204N	102,1	36,5	21	2,0

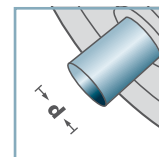
Other dimensions on request!

- ☛ Retainer for Standard Bearings: Steel
- ☛ *Alternative: Stainless

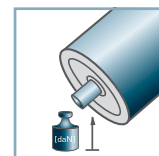
LH-6204 N



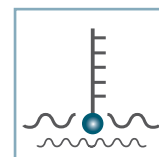
D [mm]
63,5 - 108



d [mm]
20



C [daN]
-



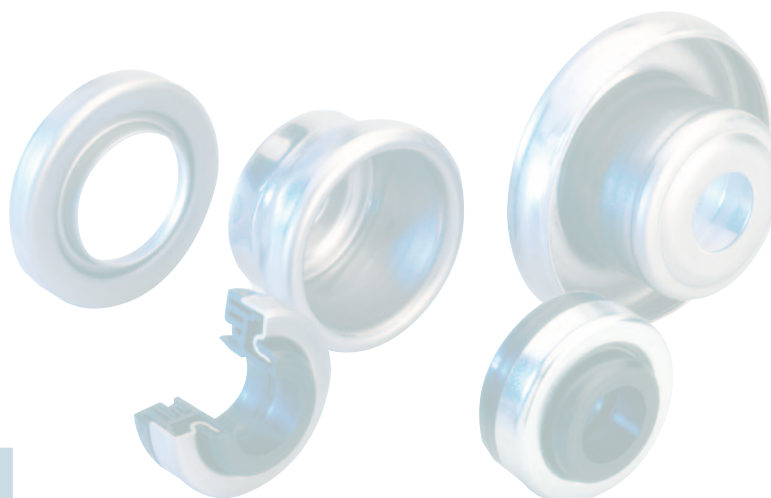
T [°C]
-



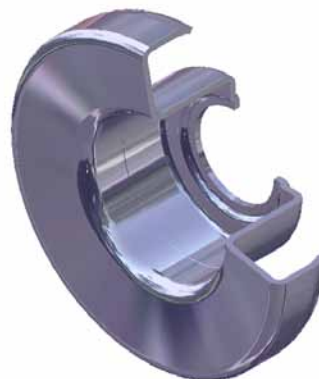
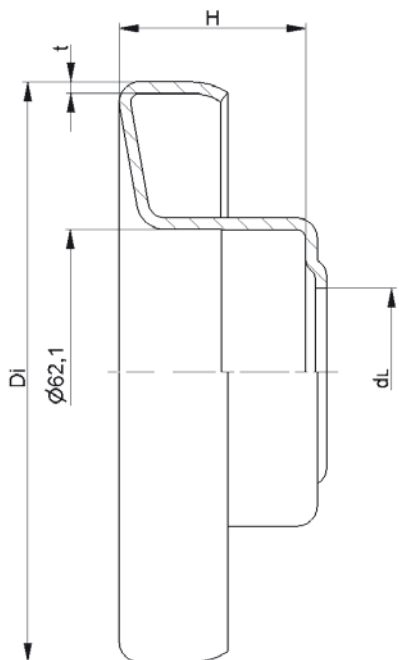
6204:
D47, d20, H14



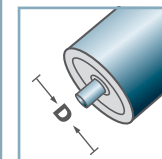
Skeleton Container [pcs.]
 ø63,5: 6000
 ø89: 3100
 ø108: 2100



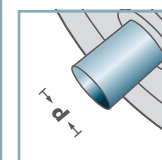
LH/FL



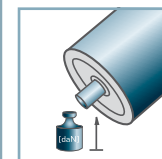
LH-6305



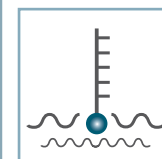
D [mm]
89 - 159



d [mm]
25



C [daN]
-



T [°C]
-



6305:
D62, d25, H17



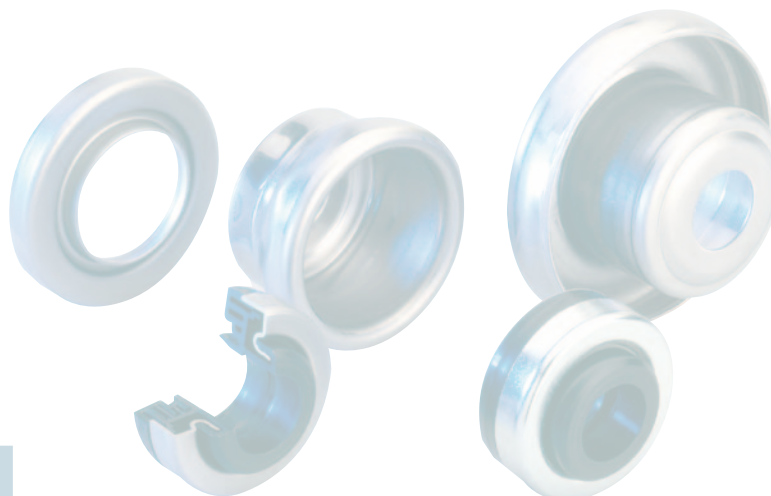
Skeleton Container [pcs.]

ø89: 2600
ø108: 1900
ø133: 1150

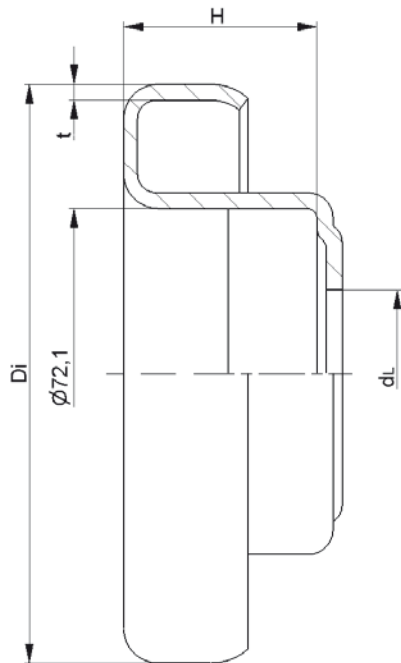
LH-6305				
Type	Di	H	dL	t
LH-89x3,0/6305	83,5	40,5	36,5	2,0
LH-108x2,5/6305	103,3	40,5	36,5	2,0
LH-108x3,25/6305	102,1	40,5	36,5	2,0
LH-133x3,6/6305	126,3	40,5	36,5	2,5
LH-159x4,5/6305	150,5	40,5	36,5	2,5

Other dimensions on request!

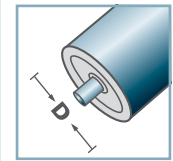
☞ Retainer for Standard Bearings: Steel



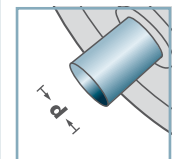
LH/FL



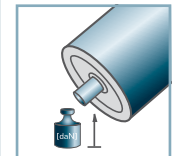
LH-6306



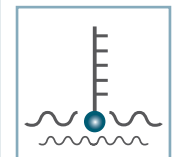
D [mm]
108 - 159



d [mm]
30



C [daN]
-



T [°C]
-



6306:
D72, d30, H19

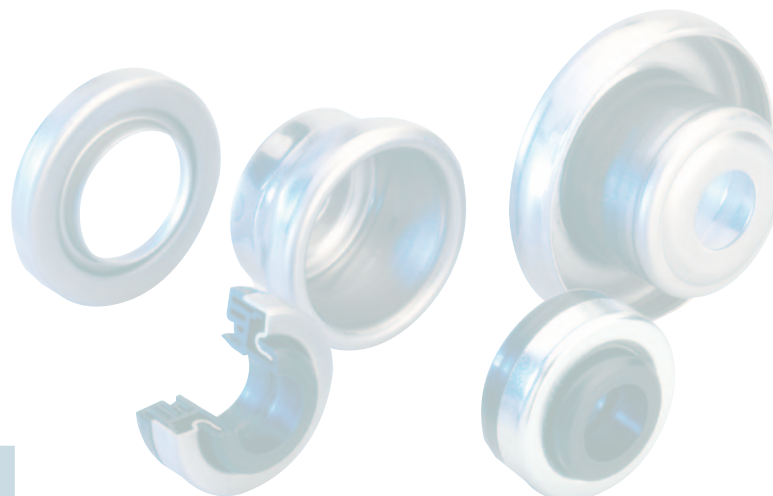


Skeleton Container [pcs.]
ø108: 1700
ø133: 1000

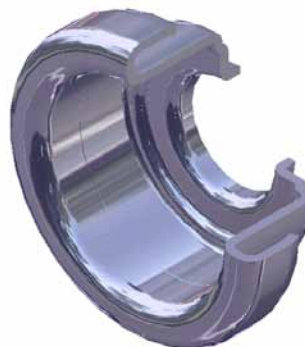
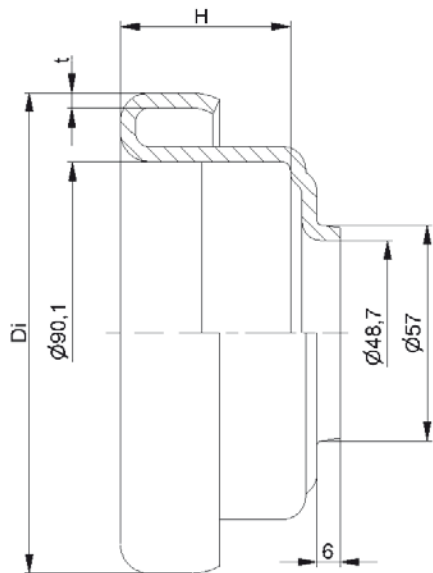
LH-6306				
Type	Di	H	dL	t
LH-108x3,25/6306	102,1	42	36,5	3,0
LH-133x3,6/6306	126,3	42	36,5	3,5
LH-159x4,5/6306	150,5	42	36,5	2,5

Other dimensions on request!

Retainer for Standard Bearings: Steel



LH/FL

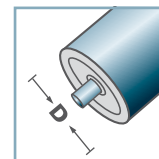


LH-6308			
Type	Di	H	t
LH-133x3,6/6308	126,3	44,6	4,0
LH-159x4,5/6308	150,8	44,6	4,0

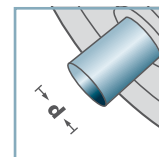
Other dimensions on request!

Retainer for Standard Bearings: Steel

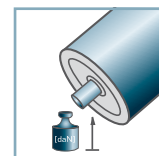
LH-6308



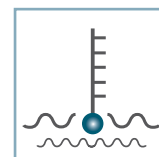
D [mm]
133 - 159



d [mm]
40



C [daN]
-



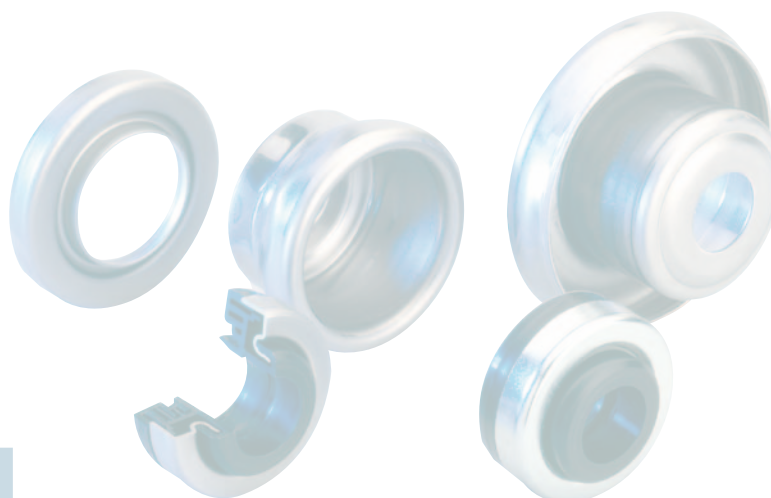
T [°C]
-



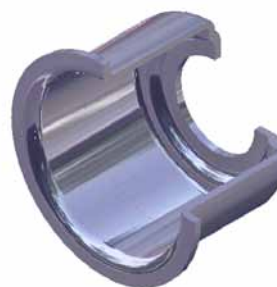
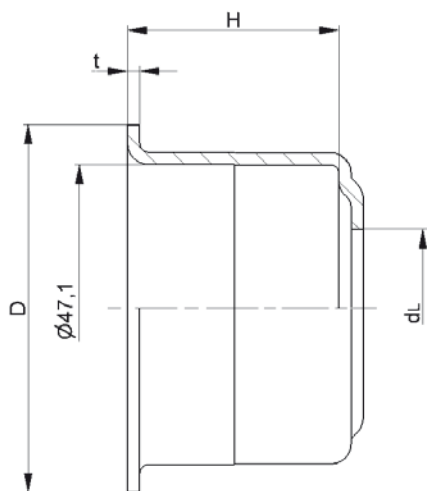
6308:
D90, d40, H23



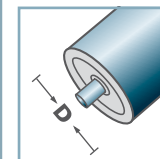
Skeleton Container [pcs.]
ø133: 800
ø159: 600



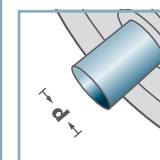
LH/FL



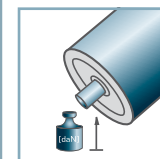
FL-6204



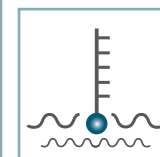
D [mm]
60 - 76



d [mm]
20



C [daN]
-



T [°C]
-



6204:
D47, d20, H14

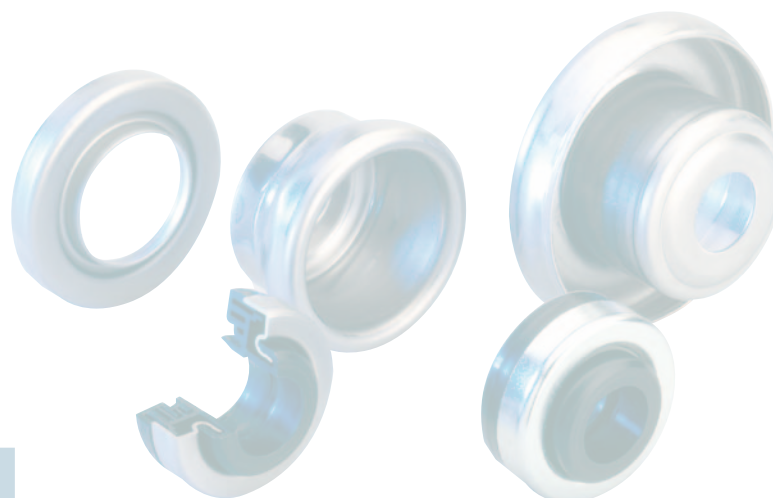


Skeleton Container [pcs.]
ø60: 4000
ø63,5: 4000
ø70: 2000
ø76: 2000

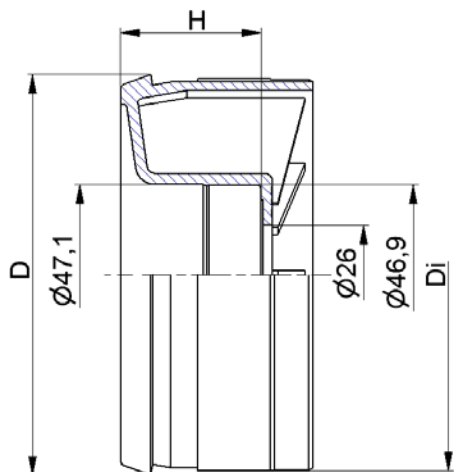
FL-6204				
Type	D	H	dL	t
FL-60x3,0/6204	58,1	34	26	2,0
FL-63,5x2,9/6204	60,0	34,5	26	2,0
FL-70/6204	67,5	34,5	26	2,0
FL-76/6204	73,5	34,5	26	2,0

Other dimensions on request!

☛ Retainer for Standard Bearings: Steel



LH/FL

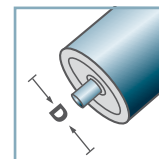


KLH-6204			
Type	Di	H	D
KLH-89x3,0/6204	83,2	36,5	85,3
KLH-108x3,0/6204	102,2	36,5	104,3

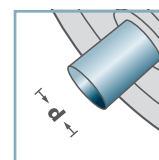
Other dimensions on request!

Retainer for Standard Bearings: Plastic

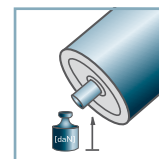
KLH-6204



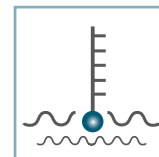
D [mm]
89 - 108



d [mm]
20



C [daN]
-



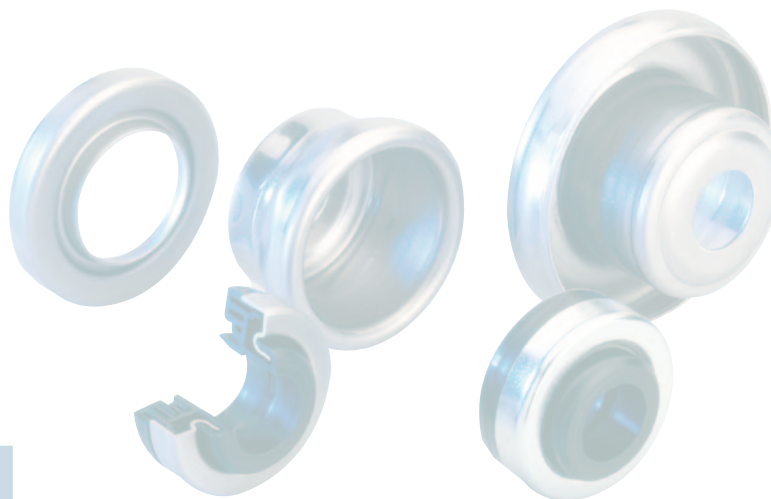
T [°C]
100°



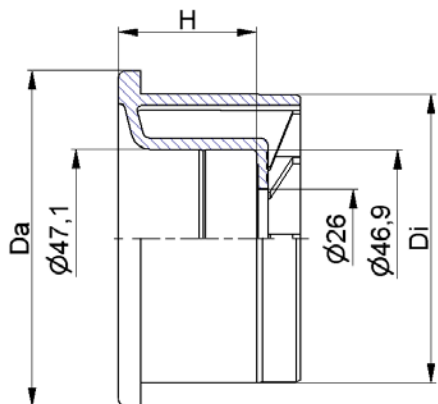
6204:
D47, d20, H14



Skeleton Container [pcs.]



LH/FL

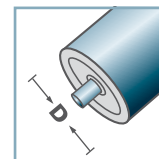


KLH-6204			
Type	Da	Di	H
KLH-90x7,0/6204	88,8	76,3	36,5

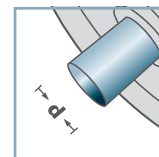
Other dimensions on request!

Retainer for Standard Bearings: Plastic

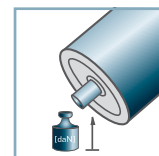
KLH-6204



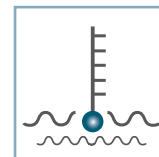
D [mm]
90



d [mm]
20



C [daN]
-



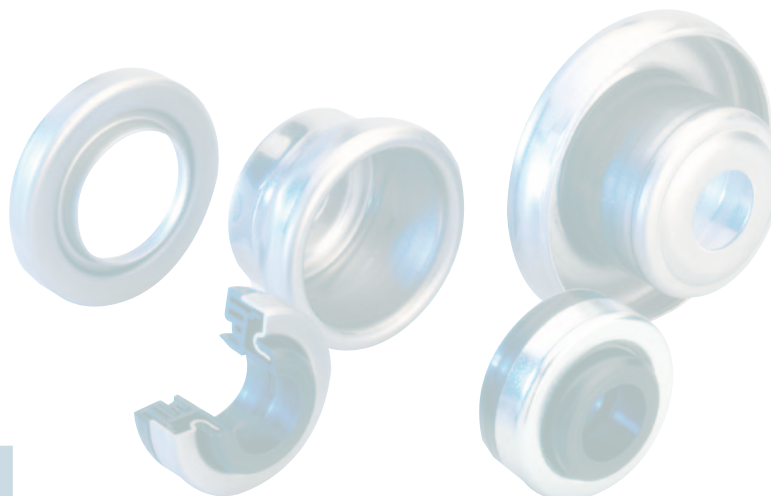
T [°C]
100°



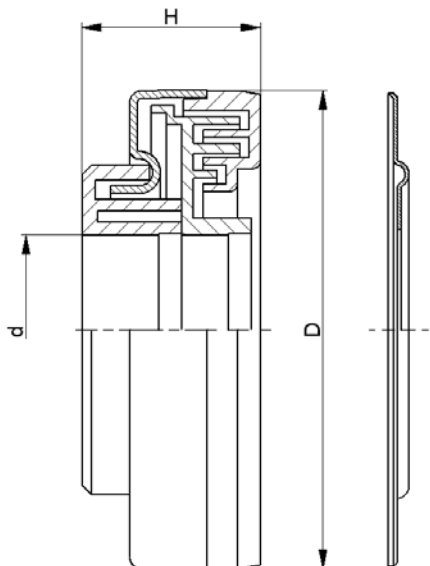
6204:
D47, d20, H14



Skeleton Container [pcs.]



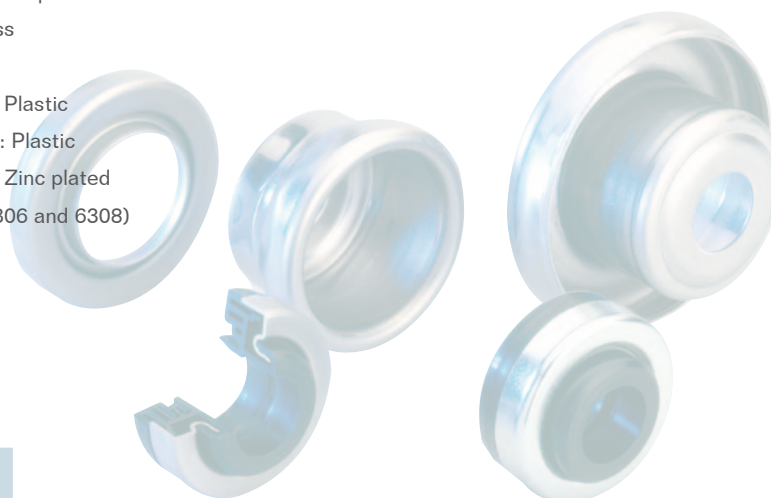
LH/FL



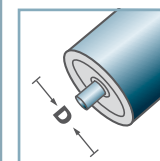
LH-			
Type	D	H	d
LH-6303	47	22,5	17
LH-6204	47	22,5	20
LH-6204 N *	47	20,0	20
LH-6305	62	23,5	25
LH-6206	62	23,5	30
LH-6306	72	24,5	30
LH-6308	90	23,1	40

Other dimensions on request!

- ☞ Seal Bonnet: Steel, Zinc plated
- ☞ *Alternative: Stainless
- ☞ Rain Cap: Plastic
- ☞ Inner Labyrinth Seal: Plastic
- ☞ Outer Labyrinth Seal: Plastic
- ☞ Sheet Gasket: Steel, Zinc plated
(not available with 6306 and 6308)

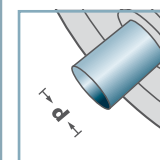


LH-



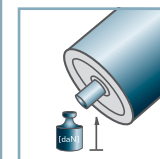
D [mm]

-



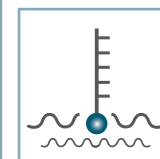
d [mm]

17 - 40



C [daN]

-



T [°C]

0° - 80°



-

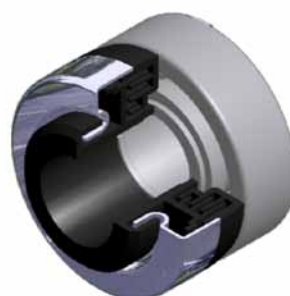
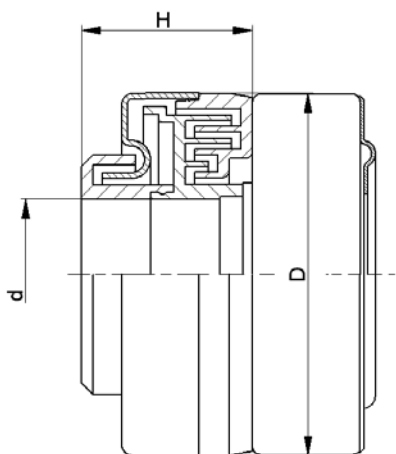


Carton [pcs.]

6204: 500

6305: 500

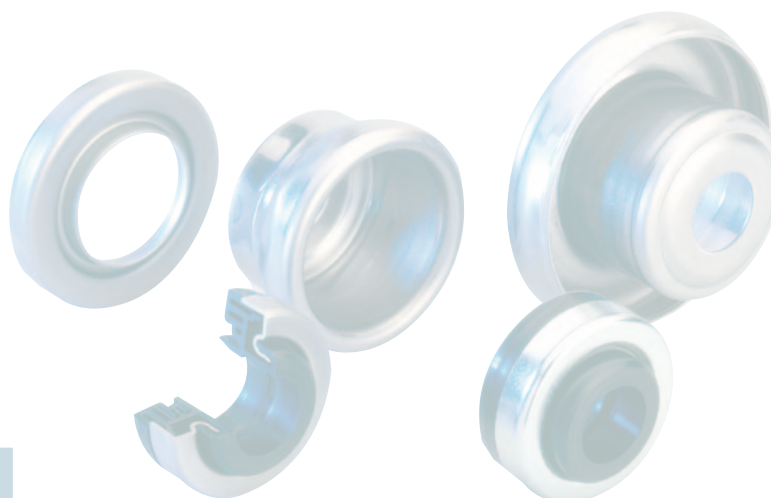
LH/FL



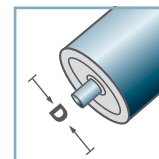
LH- mounted, greased			
Type	D	H	d
LH-6303 M	47	22,5	17
LH-6204 M	47	22,5	20

Other dimensions on request!

- ☛ Seal Bonnet: Steel, Zinc plated
- ☛ Rain Cap: Plastic
- ☛ Inner Labyrinth Seal: Plastic
- ☛ Outer Labyrinth Seal: Plastic
- ☛ Sheet Gasket: Steel, Zinc plated
- ☛ Grease: EP2

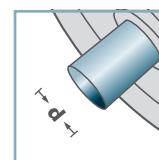


LH-

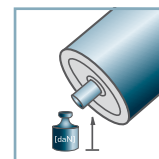


D [mm]

-

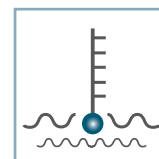


d [mm]
17, 20



C [daN]

-



T [°C]
0° - 80°



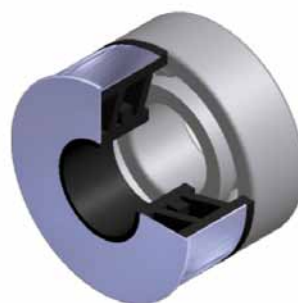
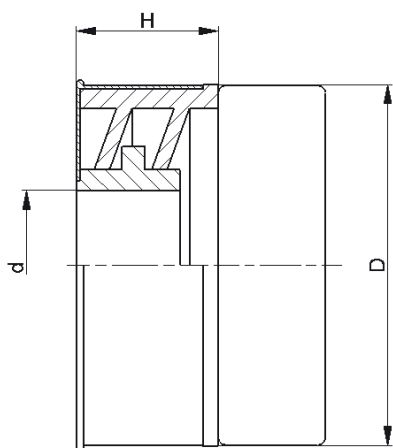
-



Carton [pcs.]



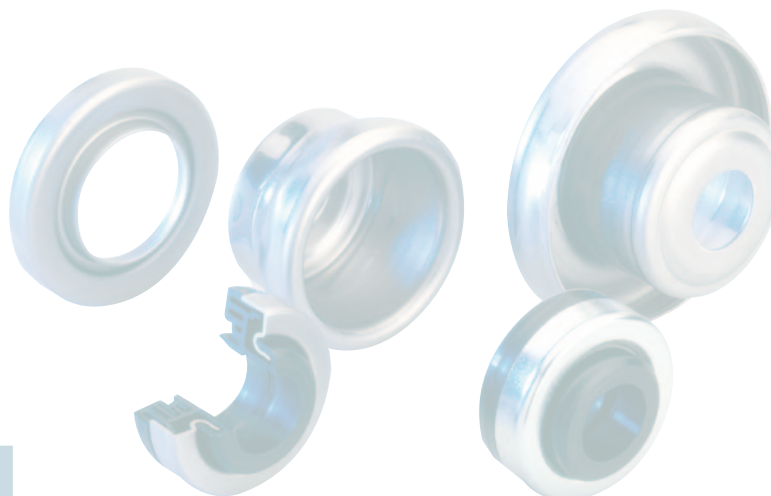
LH/FL



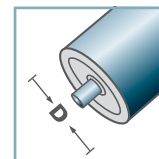
UF-			
Type	D	H	d
UF-6204	47	18,5	20

Other dimensions on request!

- ☛ Seal Bonnet: Steel, Zinc plated
- ☛ Inner Labyrinth Seal: Plastic
- ☛ Outer Labyrinth Seal: Plastic

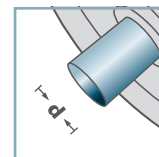


UF-



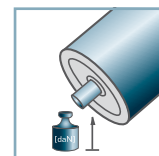
D [mm]

-



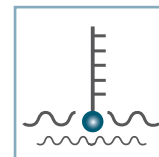
d [mm]

20



C [daN]

-



T [°C]

0° - 80°



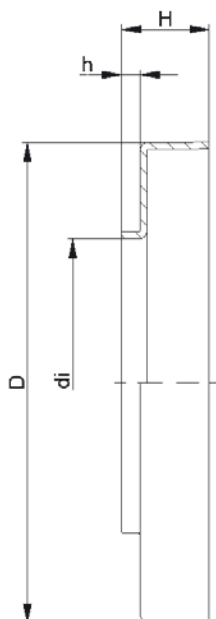
-



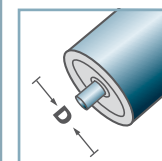
Carton [pcs.]



LH/FL

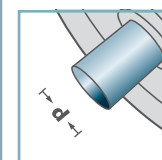


ST-



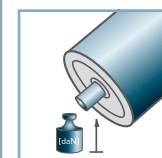
D [mm]

-



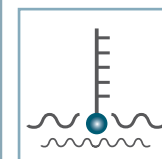
d [mm]

-



C [daN]

-



T [°C]

-



-



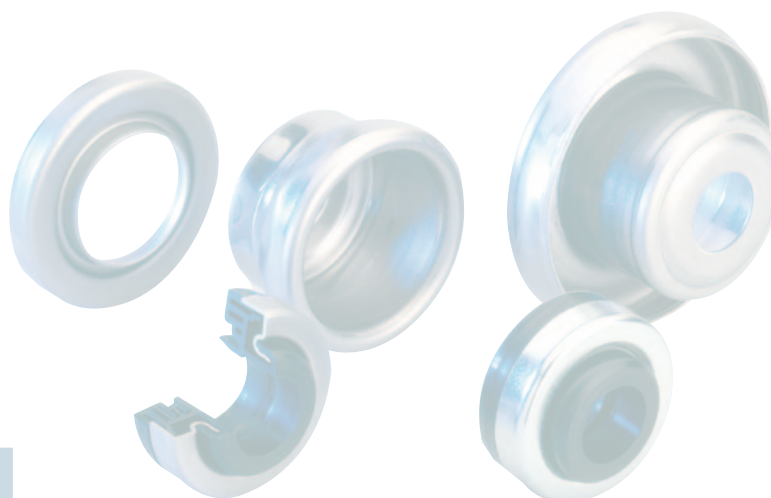
Carton [pcs.]



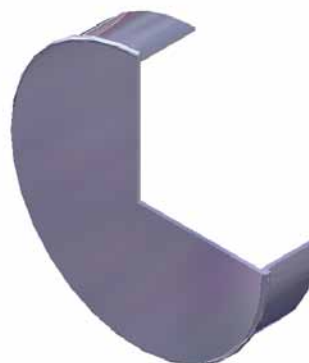
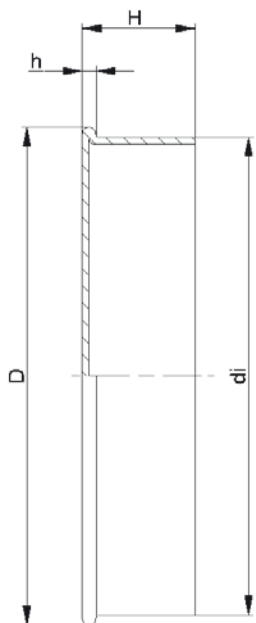
ST-				
Type	D	di	H	h
ST-6204	47,5	27,4	11,9	2,4
ST-6305	62,5	37,4	11,4	2,4
ST-6306	72,5	37,4	11,4	1,4

Other dimensions on request!

Seal Bonnet: Steel



LH/FL

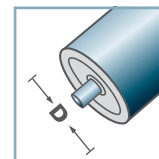


ST- closed				
Type	D	di	H	h
ST-6204	50	47,4	14,7	1,8
ST-6305	65	62,4	14,7	1,8
ST-6306	77	72,4	12,5	1,8

Other dimensions on request!

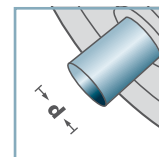
🔩 Seal Bonnet: Steel

ST-



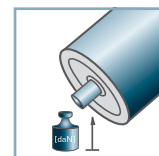
D [mm]

-



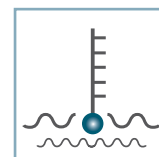
d [mm]

-



C [daN]

-



T [°C]

-

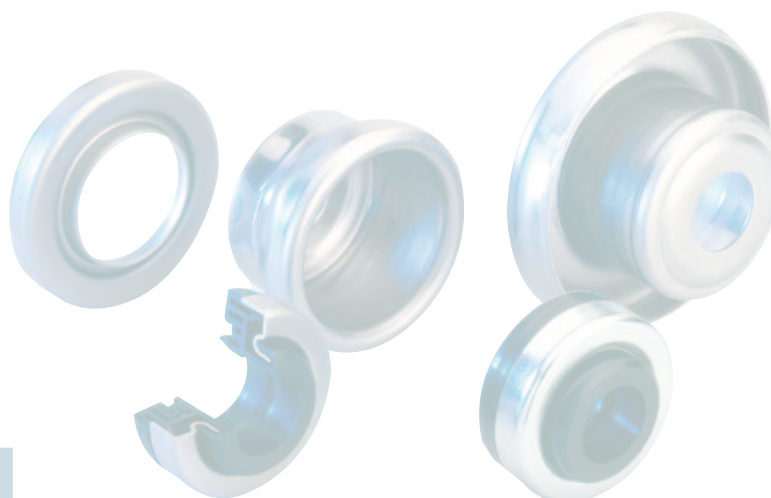


-

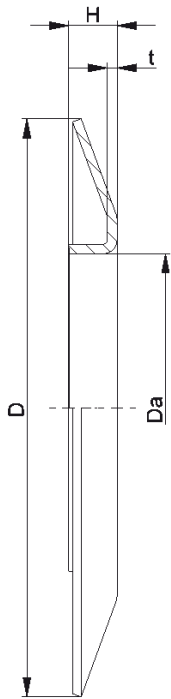


Carton [pcs.]

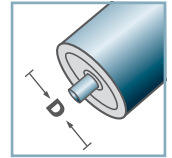
ST-6204	125
ST-6305	100
ST-6306	100



LH/FL

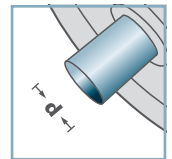


BS-



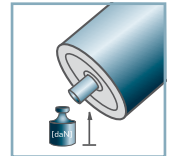
D [mm]

-



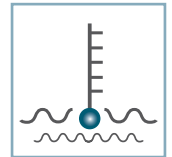
d [mm]

-



C [daN]

-



T [°C]

-



-

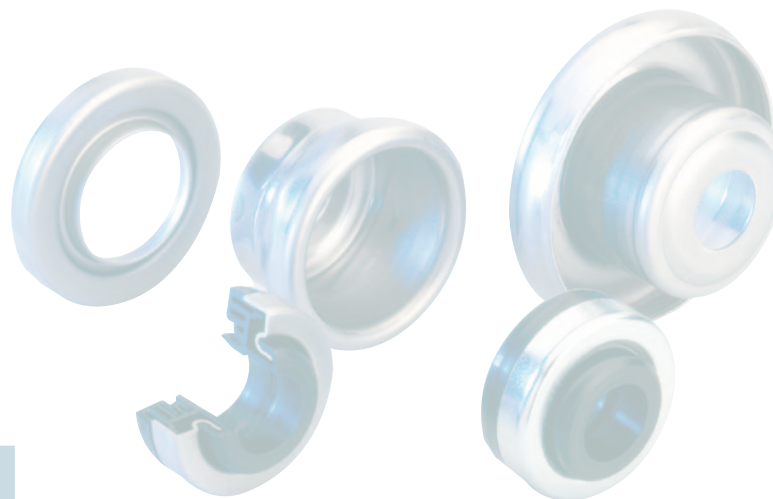


Carton [pcs.]

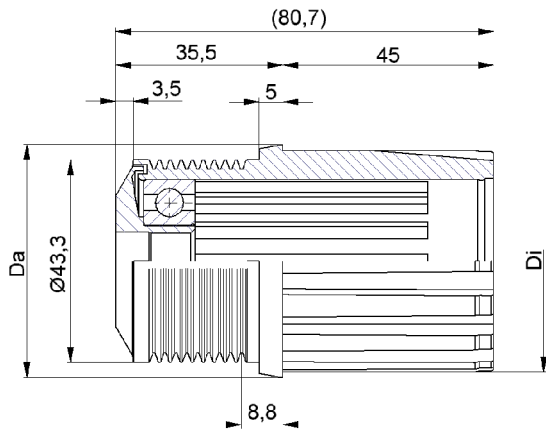
BS-				
Type	Da ±0.1	D -2	H ±0.5	t
BS-50-130	49,9	130	10	1,5
BS-60-130	59,9	130	10	1,5
BS-80-150	79,9	150	14	2,5
BS-89-150	88,9	150	14	2,5
BS-108-150	107,9	150	14	2,5

Other dimensions on request!

Wheel Flange: Steel



LH/FL

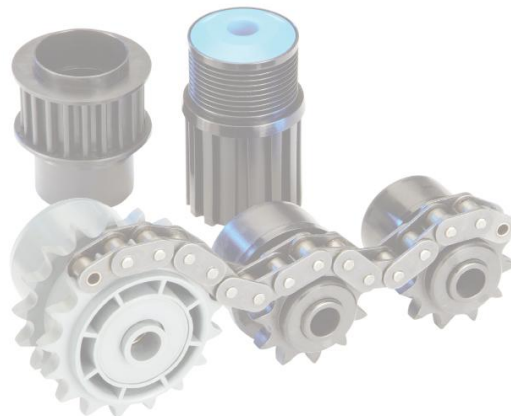


V-Beltdrive PJ VR-

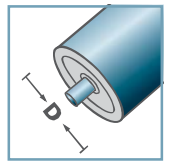
Type	Di	Da	Load Rating C [daN]
50x1,5.40	47,3	49,8	80

Driving belt available on request!

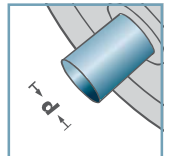
- ☛ Housing: Plastic
- ☛ Single Labyrinth Seal: Plastic
- ☛ Bearing 6202
also with two bearings available



VR-40



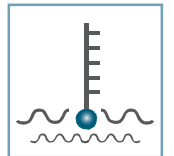
D [mm]
50



d [mm]
12



C [daN]
-



T [°C]
0° - 80°



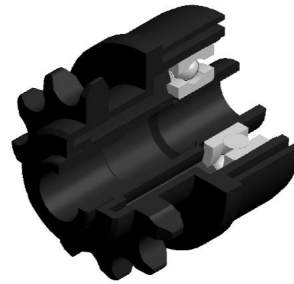
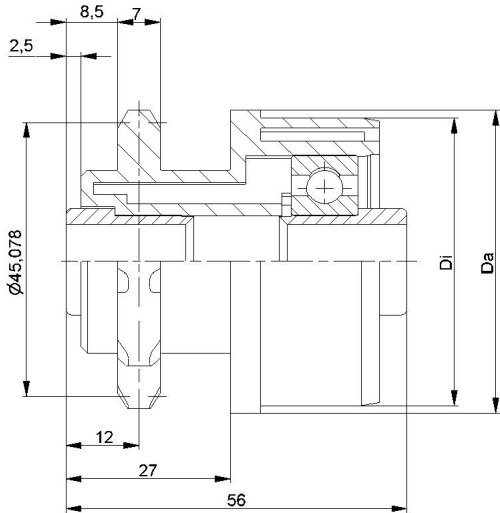
EP 2



Carton [pcs.]

60

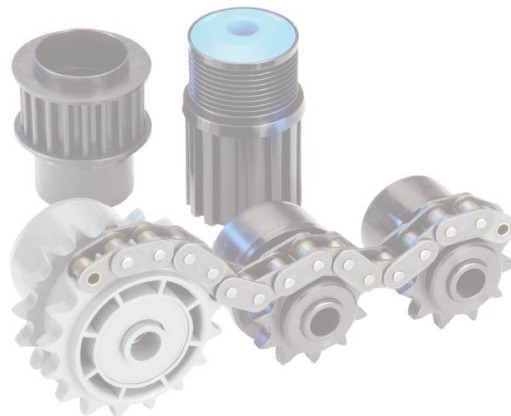
Plastic VR-Belt Drive



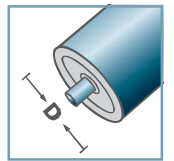
KKR-1/2" x5/16" -Z11 for fix driving		
Type	Di +0,2	Da
50x1,5.40	47,3	49,9
50x2,0.40	46,3	49,9
50x2,8.40	44,6	49,9

Other dimensions on request!

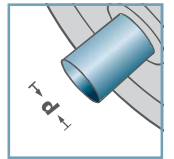
- ☛ Housing: Plastic
- ☛ Reducing Bush: Plastic
- ☛ Bearing 6202



KKR-40



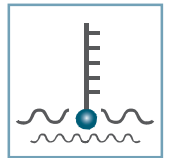
D [mm]
50



d [mm]
12



C [daN]
-



T [°C]
0° - 80°



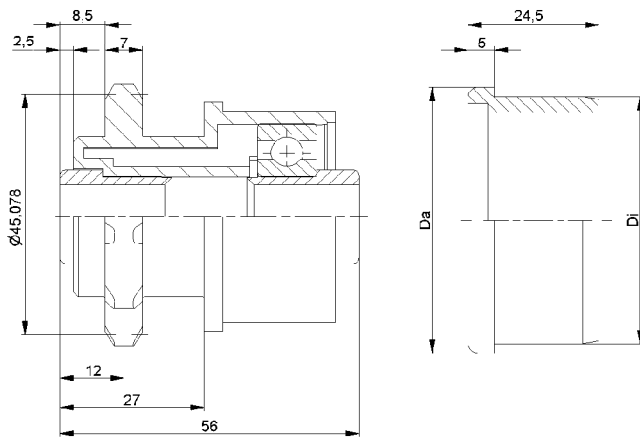
EP 2



Carton [pcs.]

150

Plastic Sprocket Wheel

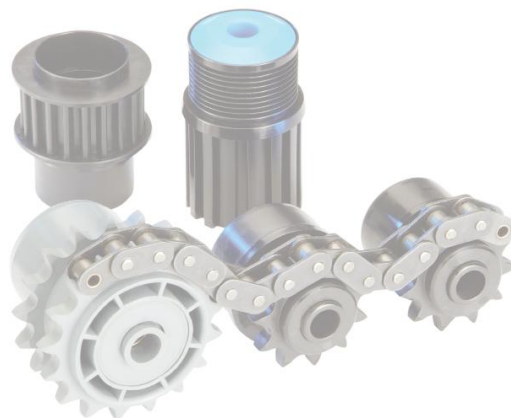


KKR-1/2" x5/16" -Z11 for friction driving

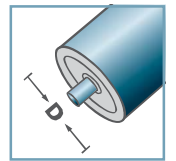
Type	Di +0,2	Da
50x1,5.40 ST	47,3	49,9
50x2,0.40 ST	46,3	49,9
50x2,8.40 ST	44,6	49,9

Other dimensions on request!

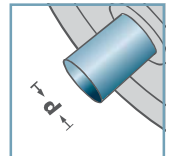
- ☛ Housing: Plastic
- ☛ Reducing Bush: Plastic
- ☛ Sliding Ring: Plastic
- ☛ Bearing 6202



KKR-40



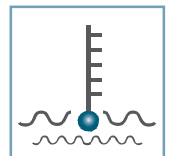
D [mm]
50



d [mm]
12



C [daN]
-



T [°C]
0° - 80°



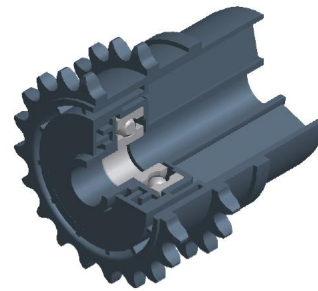
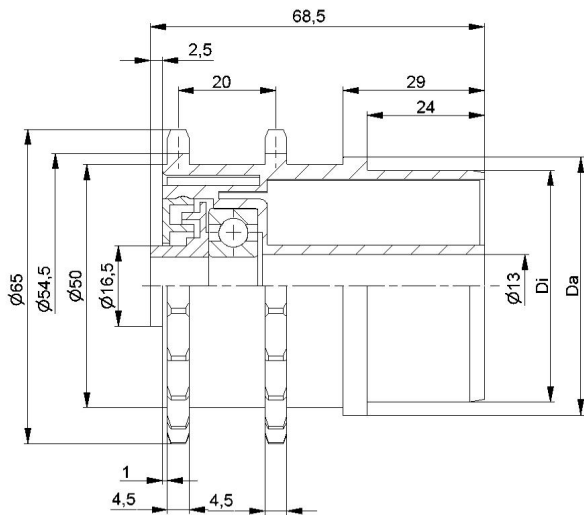
EP 2



Carton [pcs.]

Housing:
150
Sliding Ring:
300

Plastic Sprocket Wheel

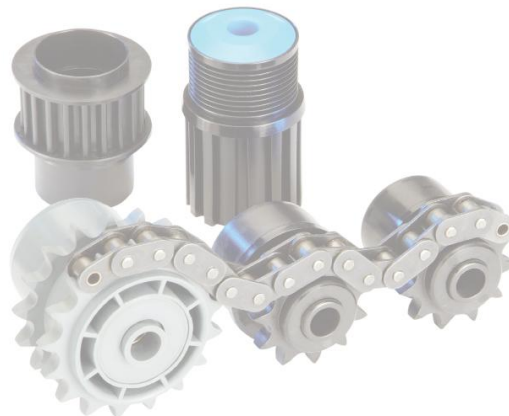


KKR-3/8" x3/16" -Z20

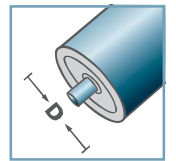
Type	Di +0,2	Da
53x3,0.41	47,6	52,9

Other dimensions on request!

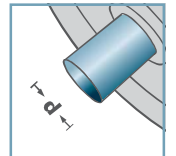
- ☛ Housing: Plastic
- ☛ Inner Labyrinth Seal: Plastic
- ☛ Outer Labyrinth Seal: Plastic
- ☛ Bearing 6201



KKR-41



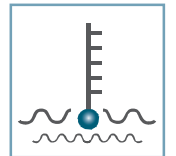
D [mm]
53



d [mm]
12



C [daN]
-



T [°C]
0° - 80°



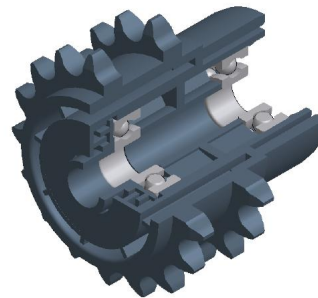
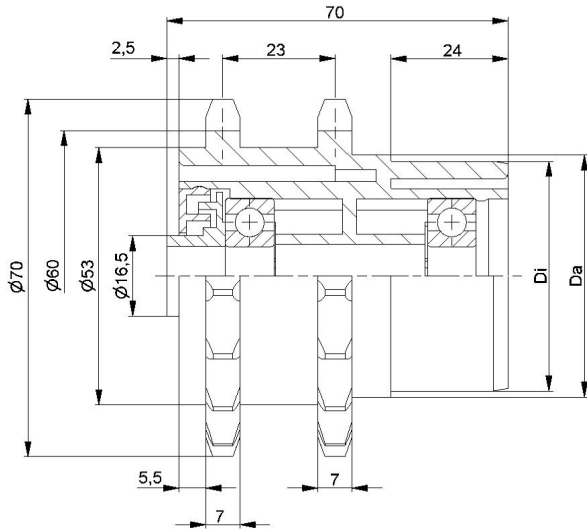
EP 2



Carton [pcs.]

60

Plastic Sprocket Wheel

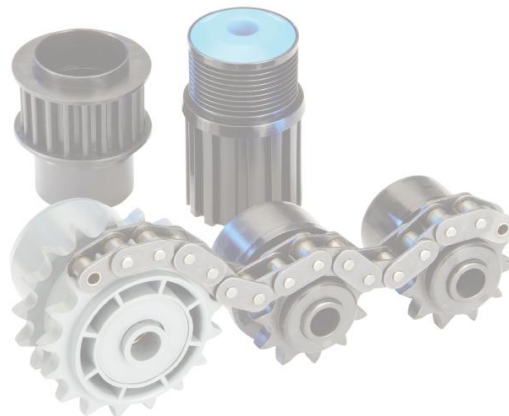


KKR-1/2" x5/16" -Z17

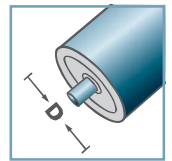
Type	Di +0,2	Da
50x1,5.41	47,3	49,8

Other dimensions on request!

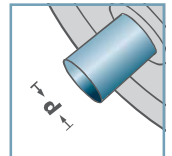
- ☛ Housing: Plastic
- ☛ Inner Labyrinth Seal: Plastic
- ☛ Outer Labyrinth Seal: Plastic
- ☛ Bearing 6201



KKR-41



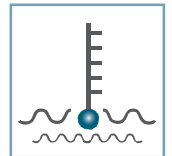
D [mm]
50



d [mm]
12



C [daN]
-



T [°C]
0° - 80°



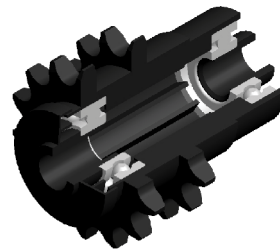
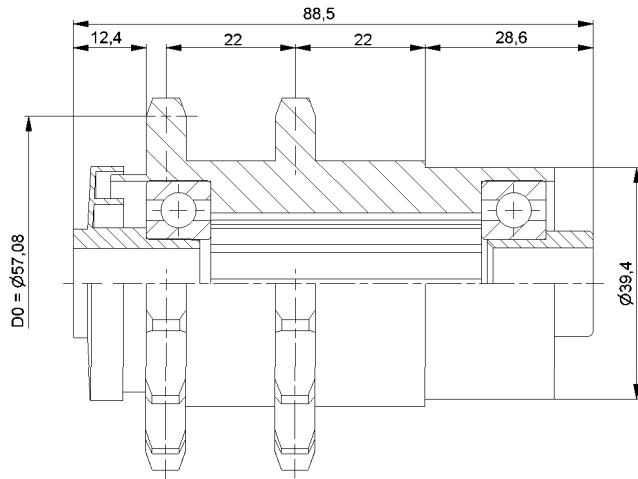
EP 2



Carton [pcs.]

150

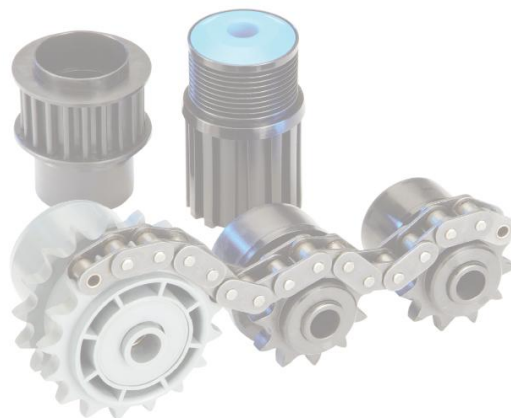
Plastic Sprocket Wheel



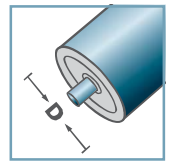
KKR-1/2" x5/16" -Z14

Other dimensions on request!

- ☛ Housing: Plastic
- ☛ Labyrinth Seal: Plastic
- ☛ Reducing Bush: Plastic
- ☛ Bearing 6202

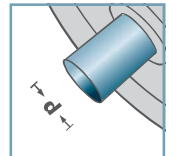


KKR-40



D [mm]

-

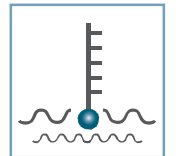


d [mm]
12



C [daN]

-



T [°C]
0° - 80°



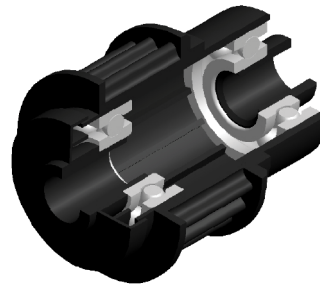
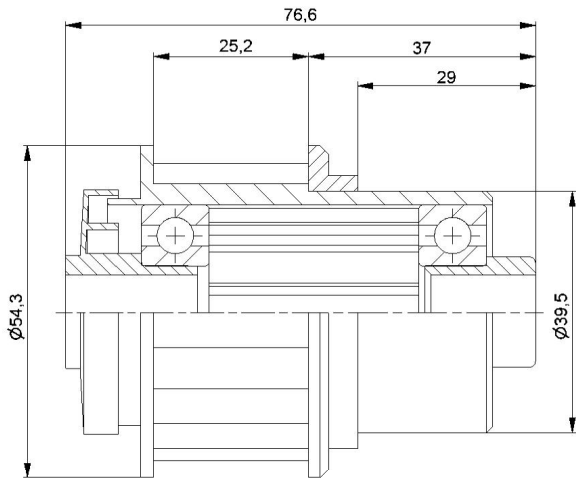
-



Carton [pcs.]

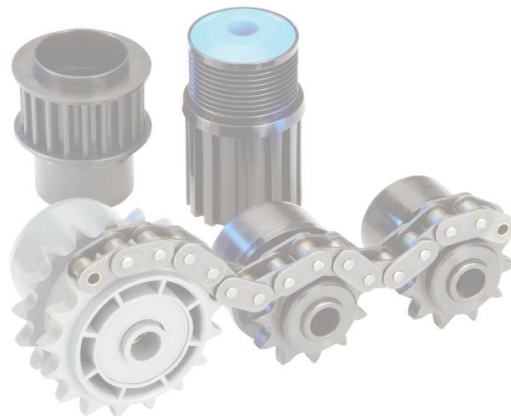
150

Plastic Sprocket Wheel

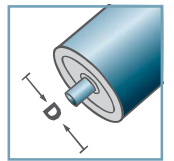


KZA-Z20.40	
Other dimensions on request!	

- ☛ Housing: Plastic
- ☛ Labyrinth Seal: Plastic
- ☛ Reducing Bush: Plastic
- ☛ Bearing 6202

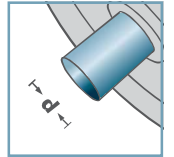


KZA-40



D [mm]

-



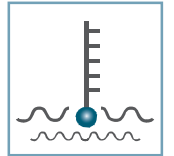
d [mm]

12



C [daN]

-



T [°C]

0° - 80°



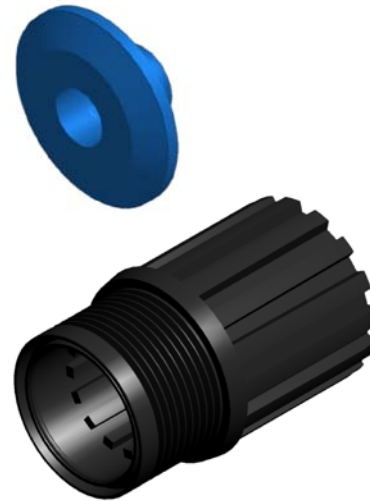
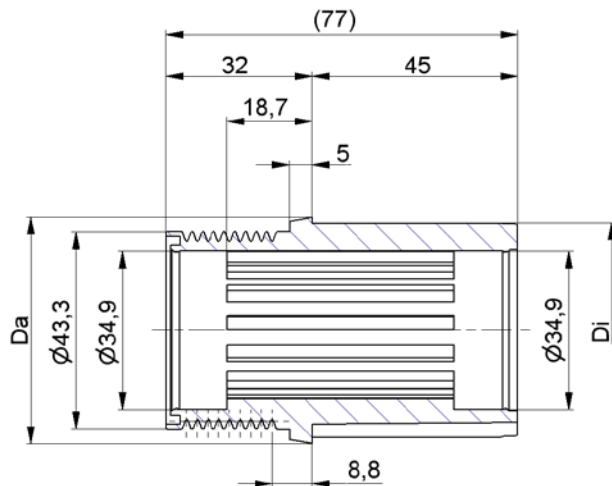
-



Carton [pcs.]

100

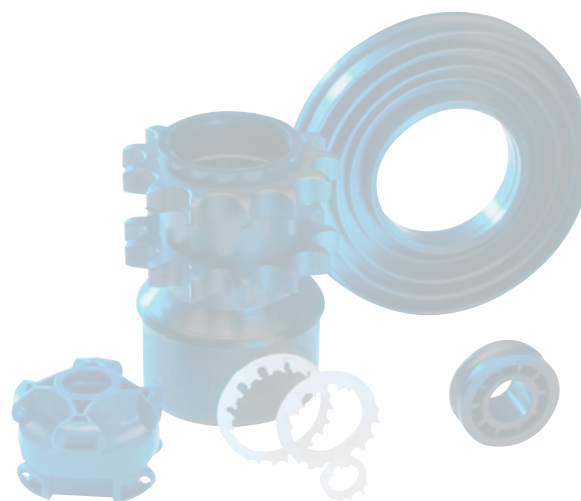
Plastic Synchronous Belt Drive



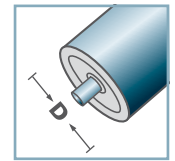
VR-		
Type	Di	Da
50x1,5.40	47,3	49,8

Driving belt available on request!

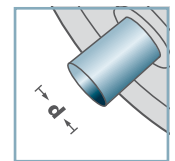
Housing: Plastic



VR-40



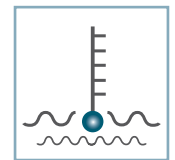
D [mm]
50



d [mm]
-



C [daN]
-



T [°C]
0° - 100°



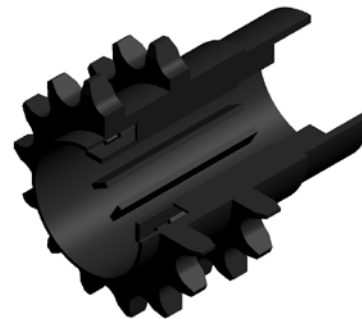
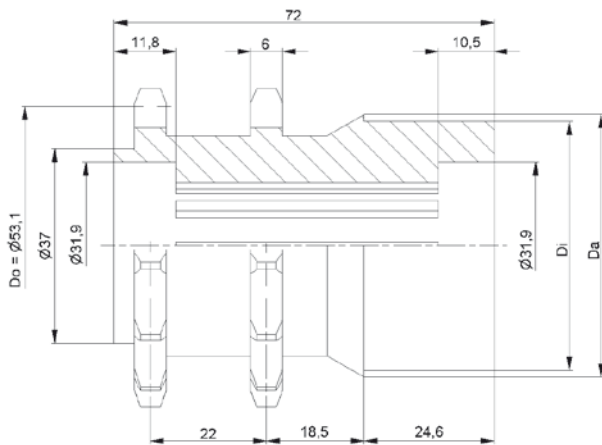
-



Carton [pcs.]

150

Plastic VR-Belt Drive Wheel

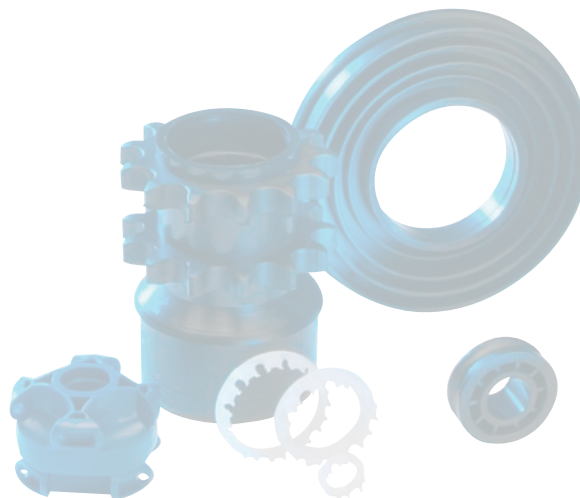


KKR-1/2"x5/16"-Z13

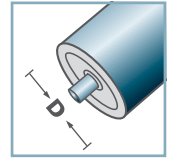
Type	Di +0,2	Da
50x1,5.40	47,3	49,9

Other dimensions on request!

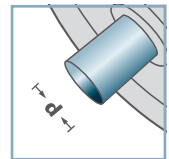
Housing: Plastic



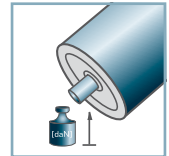
KKR-40



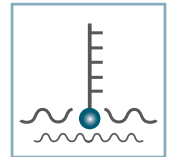
D [mm]
50



d [mm]
-



C [daN]
-



T [°C]
0° - 80°



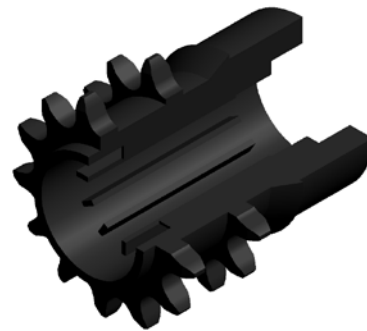
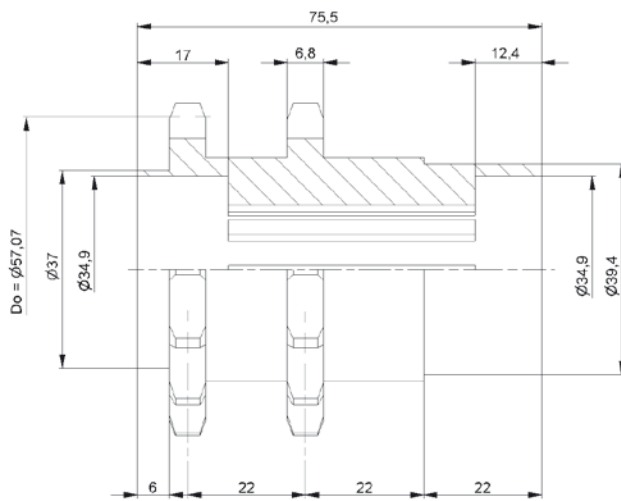
-



Carton [pcs.]

100

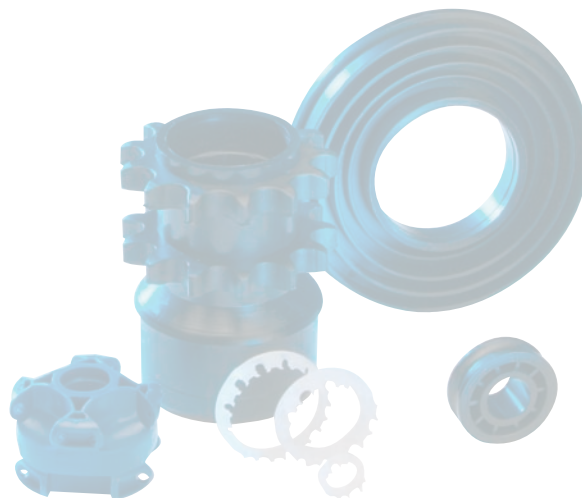
Plastic Sprocket Wheel



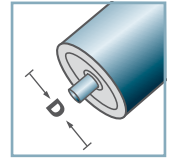
KKR-1/2"x5/16"-Z14

Other dimensions on request!

Housing: Plastic

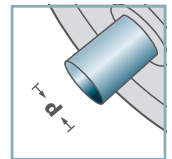


KKR-40



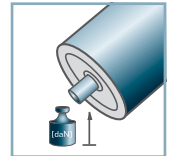
D [mm]

-



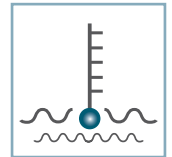
d [mm]

-



C [daN]

-



T [°C]

$0^\circ - 80^\circ$



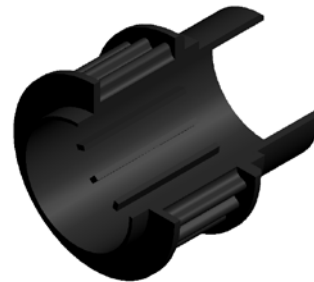
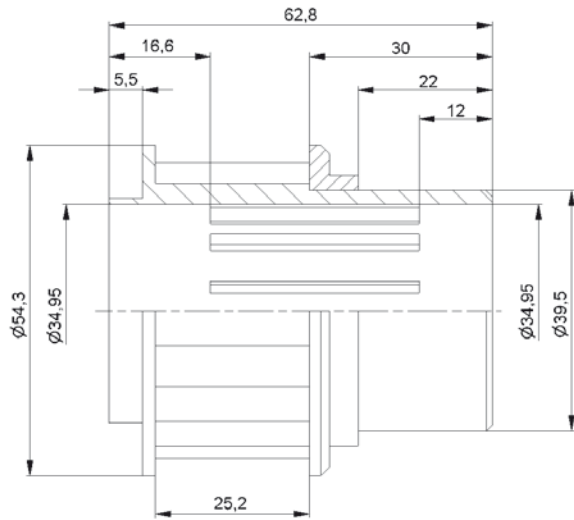
-



Carton [pcs.]

100

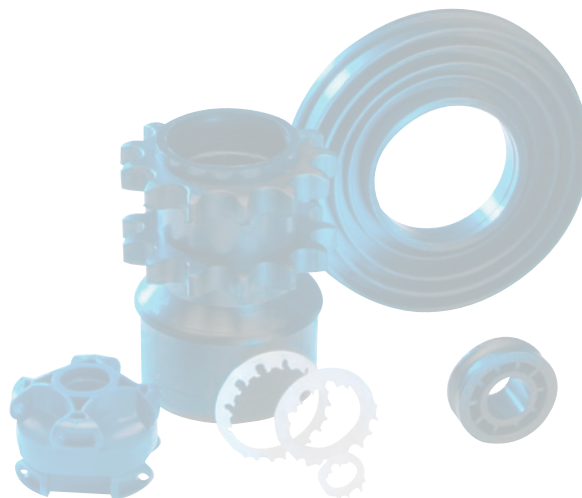
Plastic Sprocket Wheel



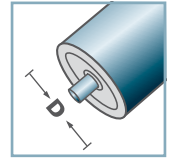
KZA-Z20.40

Other dimensions on request!

Housing: Plastic

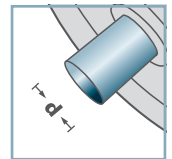


KZA-40



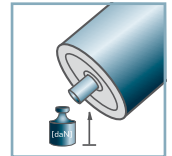
D [mm]

-



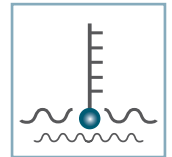
d [mm]

-



C [daN]

-



T [°C]

0° - 80°



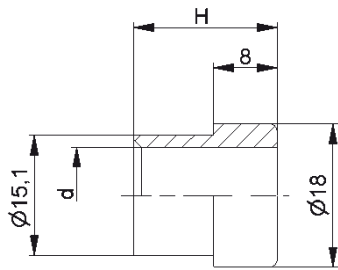
-



Carton [pcs.]

150

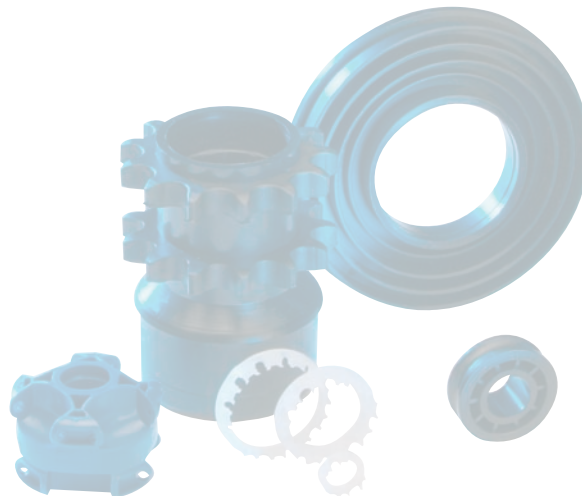
Plastic Synchronous Belt Drive



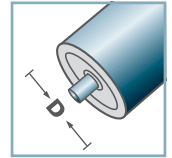
KKR-40		
	d	H
KKR-40	10	19
KKR-40	12	18
KKR-40	14	19
KKR-40	SW11	19

Other dimensions on request!

Reducing Bush: Plastic

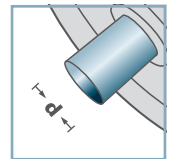


KKR-40



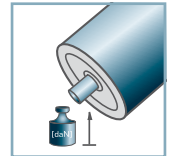
D [mm]

-



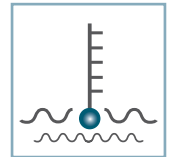
d [mm]

10; 12; 14; SW11



C [daN]

-



T [°C]

0° - 80°



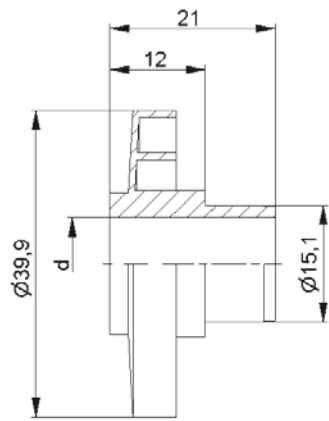
-



Carton [pcs.]

500

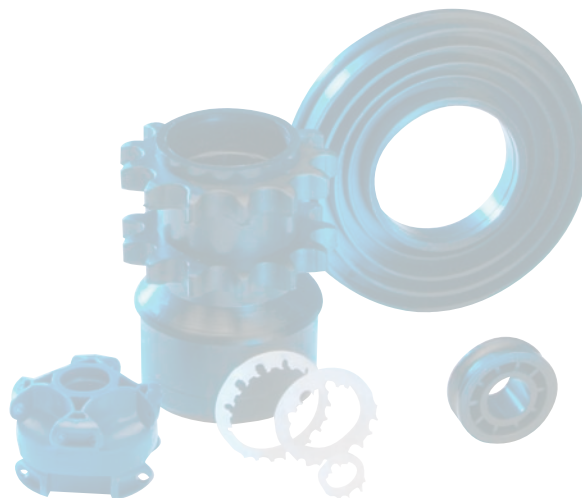
Reducing Bush



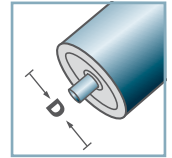
KKR-40	
Typ	d
KKR-40	10
KKR-40	12
KKR-40	14
KKR-40	SW11

Other dimensions on request!

Labyrinth Seal: Plastic

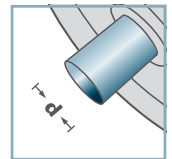


KKR-40



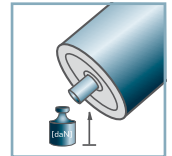
D [mm]

-



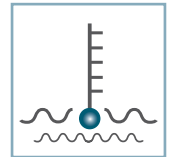
d [mm]

10; 12; 14; SW11



C [daN]

-



T [°C]

0° - 80°



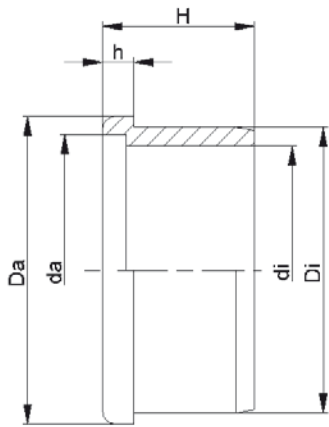
-



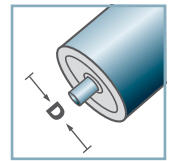
Carton [pcs.]

1000

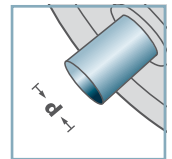
Labyrinth Seal



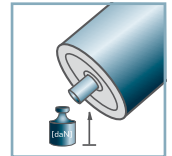
KKR-40



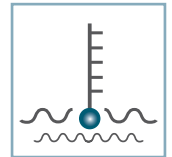
D [mm]
50 - 60



d [mm]
-



C [daN]
-



T [°C]
0° - 80°



-



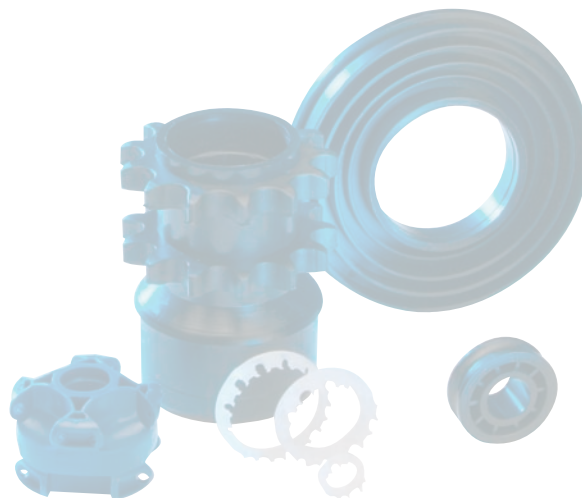
Carton [pcs.]

ø50: 400
ø60: 250
ø80: 100

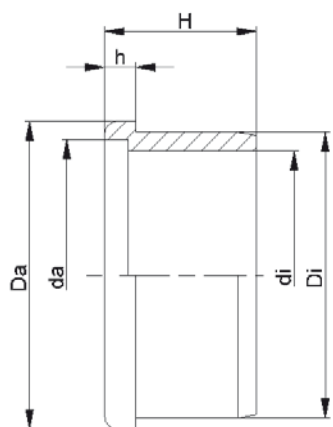
KKR-40						
Typ	Di	Da	di	da	H	h
50x1,5	47,25	50	39,3	42,6	25,2	5
50x2,8	44,7	50	39,3	42,6	25,2	5
60x1,5	57,3	60	47,0	50,7	25,5	5
60x2,0	56,3	60	47,0	50,7	25,5	5

Other dimensions on request!

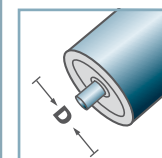
Distance Ring Fix: Plastic



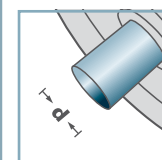
Distance Ring Fix



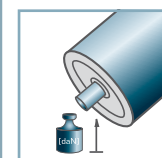
KKR-40



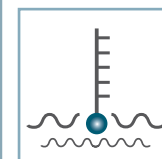
D [mm]
50 - 60



d [mm]
-



C [daN]
-



T [°C]
0° - 80°



-



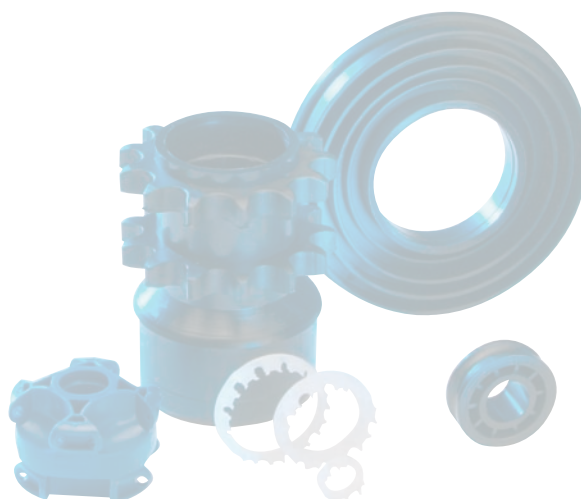
Carton [pcs.]

400

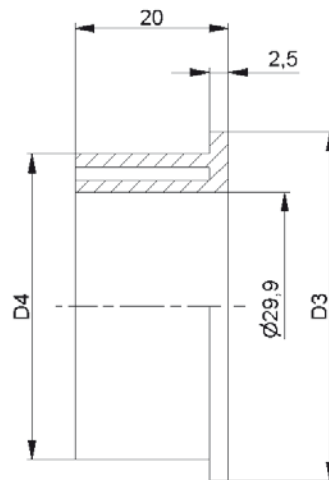
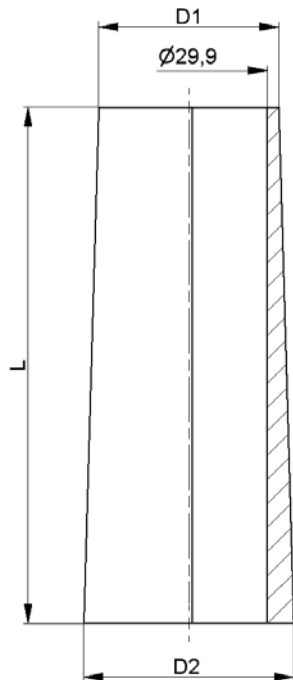
KKR-40						
Typ	Di	Da	di	da	H	h
50x1,5	47,2	50	40,6	44,6	25	5
50x2,8	44,6	49,7	40,6	44,6	25	4,8

Other dimensions on request!

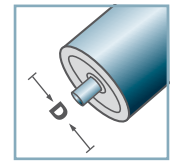
☞ Distance Ring Friction: Plastic



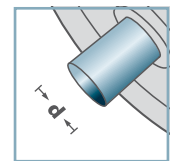
Distance Ring Friction



KF-30



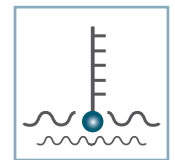
D [mm]
30



d [mm]
-



C [daN]
-



T [°C]
0° - 80°



-

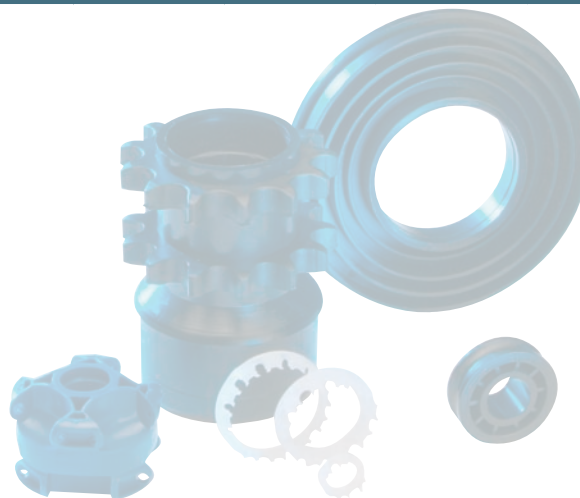


Carton [pcs.]

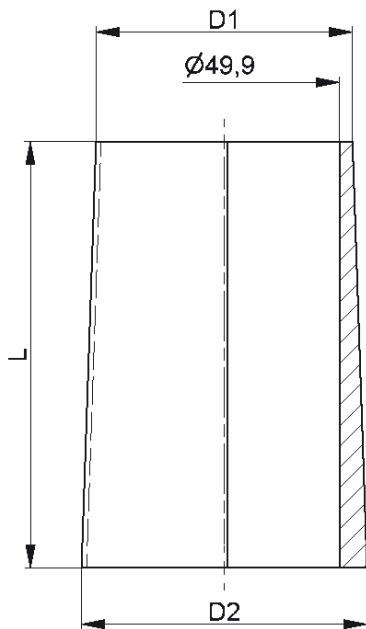
KF-30					
Type A	D1	D2	L	D3	D4
KF-30 I Type A	33,6	39,2	96,4	-	-
KF-30 II Type A	39,1	45,6	100,5	45,6	40
KF-30 III Type A	45,7	52,1	100,5	52,1	46,7
KF-30 IV Type A	52,2	58,8	100,5	57,9	57,9
KF-30 V Type A	58,6	65,1	100,5	64,9	60,0
KF-30 VI Type A	65,2	71,9	100,5	71,3	66,4

Other dimensions on request!

- ☑ Conic Roller: Plastic
- ☑ Endcap: Plastic



Taper Sleeves



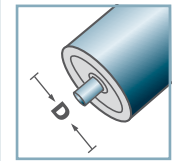
KF-50					
Type A	D1	D2	L	D3	D4
KF-50 I-a Type A	53,4	59,7	92,5	-	-
KF-50 I-b Type A	54,0	59,7	95,5	-	-
KF-50 II Type A	60,0	66,5	100,0	-	-
KF-50 III Type A	66,5	73,0	99,0	-	-
KF-50 IV Type A	73,5	80,0	100,0	50,6	75,5
KF-50 V Type A	80,0	86,5	95,5	50,7	81,7
KF-50 VI Type A	86,5	93,5	100,0	50,6	87,7
KF-50 VII Type A	93,5	100,0	100,0	50,6	94,3
KF-50 VIII Type A	100,0	106,5	95,5	-	-
KF-50 IX Type A	106,5	113,0	95,5	-	-
KF-50 X Type A	113,0	119,5	95,5	-	-

Other dimensions on request!

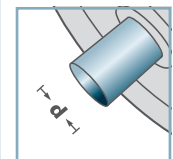
- ☉ Conic Roller: Plastic
- ☉ Endcap: Plastic



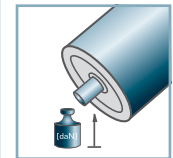
KF-50



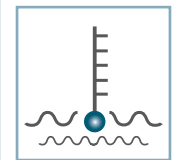
D [mm]
50



d [mm]
-



C [daN]
-



T [°C]
0° - 80°



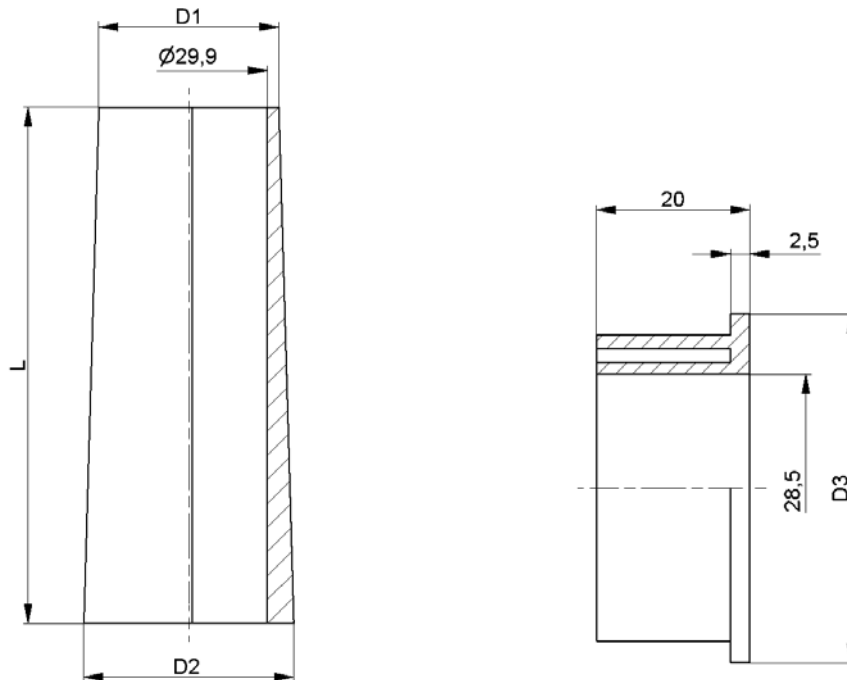
-



Carton [pcs.]



Taper Sleeves



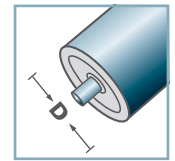
KF-30				
Type	D1	D2	D3	L
KF-30 I Type B	34,0	39,6	-	83
KF-30 II Type B	39,6	46,4	-	100
KF-30 III Type B	46,4	53,2	48,8	100
KF-30 IV Type B	53,2	59,9	55,8	100
KF-30 V Type B	59,9	66,7	62,3	100
KF-30 VI Type B	66,7	73,5	68,8	100

Other dimensions on request!

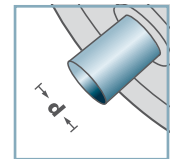
- ☑ Conic Roller: Plastic
- ☑ Endcap: Plastic



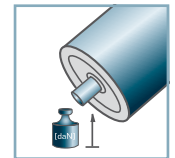
KF-30



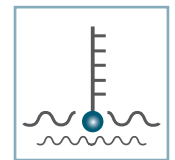
D [mm]
30



d [mm]
-



C [daN]
-



T [°C]
0° - 80°



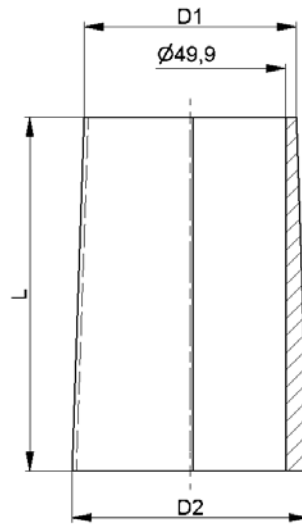
-



Carton [pcs.]



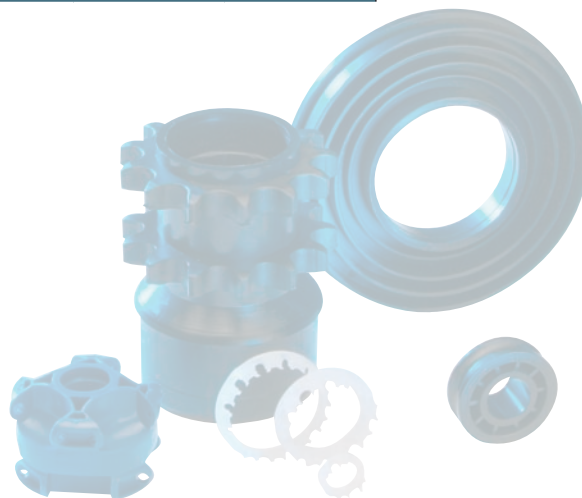
Taper Sleeves



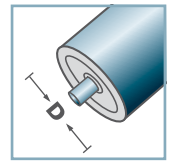
KF-50			
Type	D1	D2	L
KF-50 I Type B	54,0	59,9	90,0
KF-50 II Type B	59,9	66,6	100,0
KF-50 III Type B	66,6	73,4	100,0
KF-50 IV Type B	73,4	80,1	100,0
KF-50 V Type B	80,1	86,9	100,0
KF-50 VI Type B	86,9	93,6	100,0
KF-50 VII Type B	93,6	100,4	100,0
KF-50 VIII Type B	100,4	107,1	100,0
KF-50 IX Type B	107,1	113,9	100,0
KF-50 X Type B	113,9	120,9	100,0

Other dimensions on request!

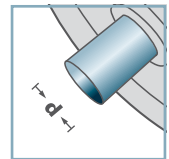
- ☑ Conic Roller: Plastic
- ☑ Endcap: not necessary



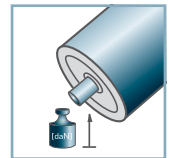
KF-50



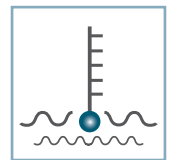
D [mm]
50



d [mm]
-



C [daN]
-



T [°C]
0° - 80°



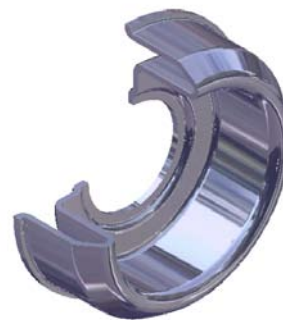
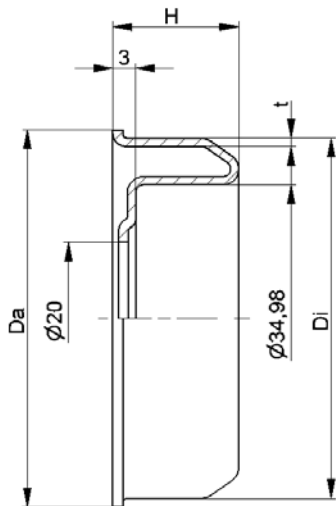
-



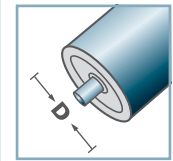
Carton [pcs.]



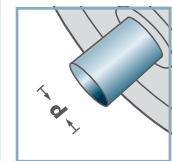
Taper Sleeves



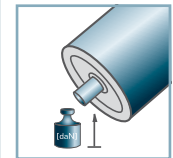
MRK-40



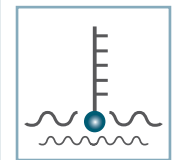
D [mm]
50 - 60



d [mm]
15



C [daN]
-



T [°C]
-



6202:
D35; d15; H11



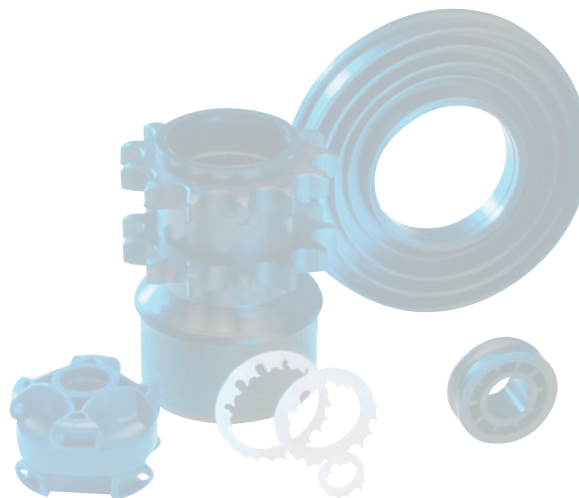
Carton [pcs.]

ø50: 100
ø60: 250

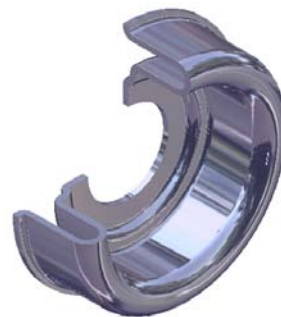
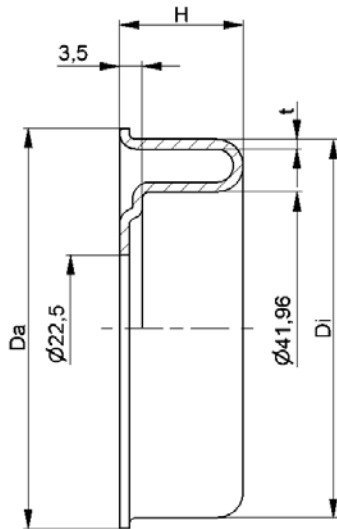
MRK-40				
Type	Di ±0,1	Da	H	t
MRK-50x1,5.40	47,3	49,5	16	1,2
MRK-50x2,0.40	46,3	49,5	16	1,2
MRK-60x2,0.40	56,3	59,5	16,5	1,5
MRK-60x3,0.40	54,3	59,5	16,5	1,5

Other dimensions on request!

C Housing: Steel, Zinc plated



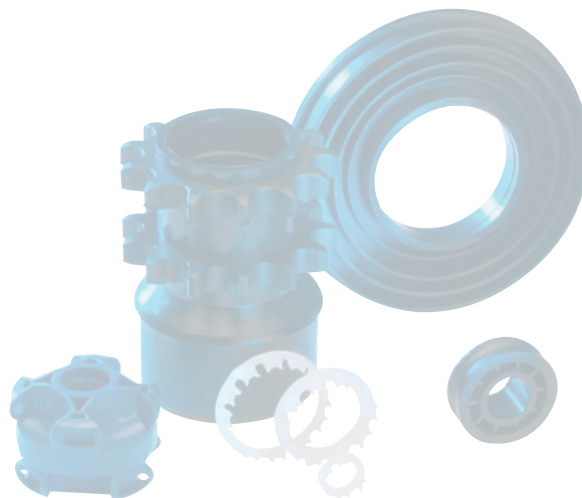
Steel Housing



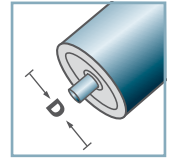
MRK-6004				
Type	Di ±0,1	Da	H	t
MRK-63,5x2,9/6004	58,1	61,5	19,0	1,5

Other dimensions on request!

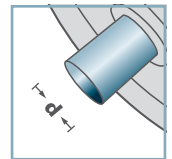
☞ Housing: Steel, Zinc plated



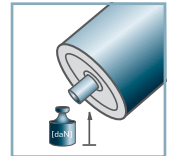
MRK-6004



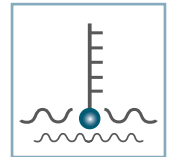
D [mm]
63,5



d [mm]
20



C [daN]
-



T [°C]
-



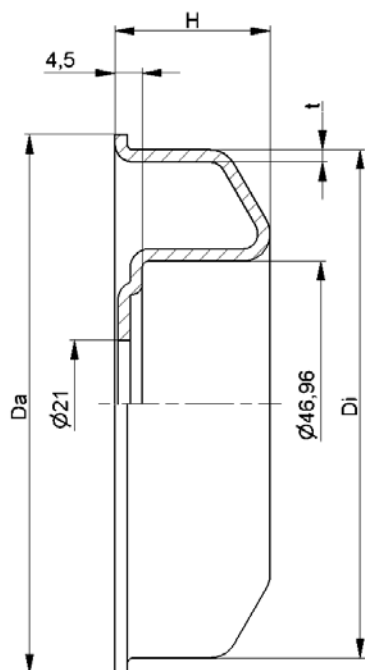
6004:
D42; d20; H12



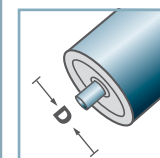
Carton [pcs.]

50

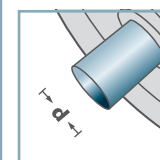
Steel Housing



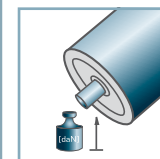
MRK-6204



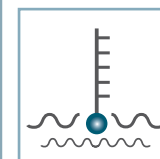
D [mm]
80 - 108



d [mm]
20



C [daN]
-



T [°C]
-



6204:
D47; d20; H14



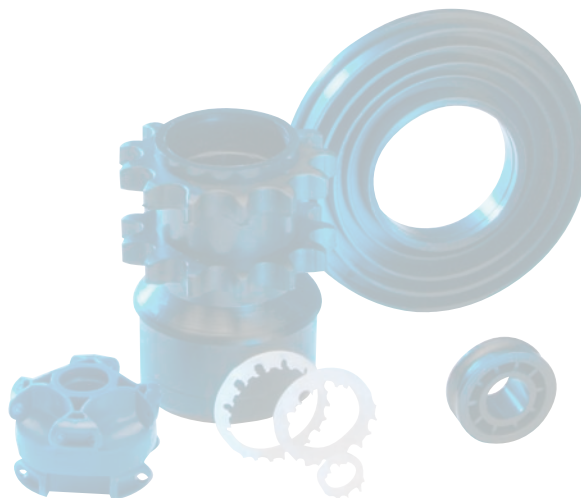
Carton [pcs.]

50

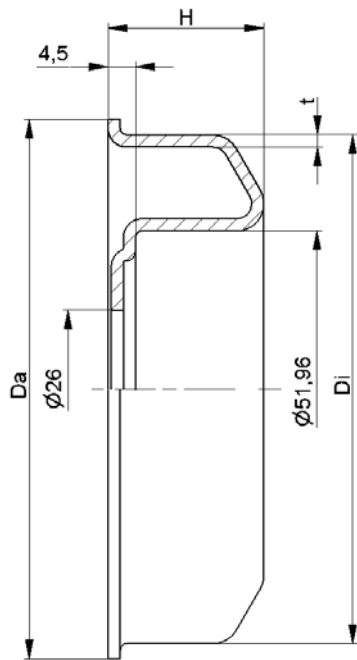
MRK-6204				
Type	Di ±0,1	Da	H	t
MRK-80x2,0/6204	76,5	79,5	23,5	2,0
MRK-80x3,0/6204	74,5	79,5	23,5	2,0
MRK-89x3,0/6204	83,5	88,5	23,5	2,0
MRK-89x3,25/6204	83,0	88,5	23,5	2,0
MRK-108x3,25/6204	102,0	107,5	25,0	2,0

Other dimensions on request!

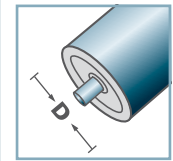
Housing: Steel, Zinc plated



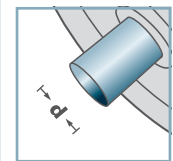
Steel Housing



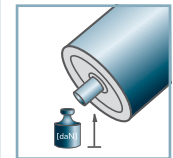
MRK-6205



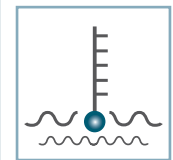
D [mm]
80 - 108



d [mm]
25



C [daN]
-



T [°C]
-



6205:
D52; d25; H15



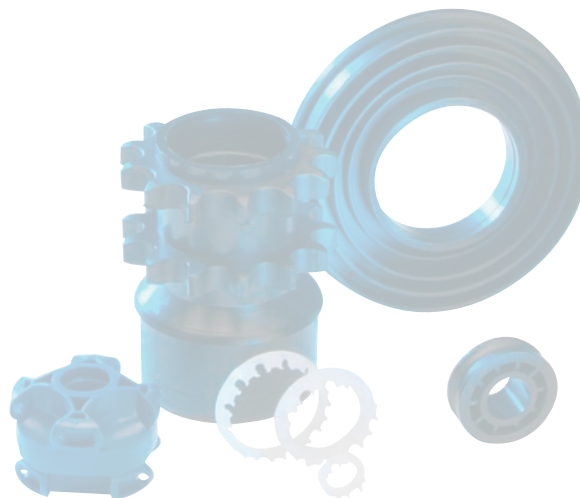
Carton [pcs.]

50

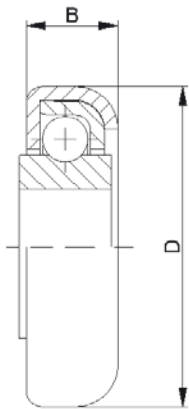
MRK-6205				
Type	Di ±0,1	Da	H	t
MRK-80x2,0/6205	76,5	79,5	23,5	2,0
MRK-80x3,0/6205	74,5	79,5	23,5	2,0
MRK-89x3,0/6205	83,5	88,5	24,5	2,0
MRK-108x3,25/6205	102,0	107,5	25,5	2,0

Other dimensions on request!

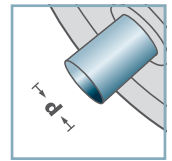
C Housing: Steel, Zinc plated



Steel Housing



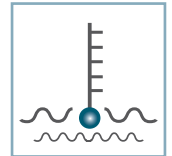
RL-0.280



d [mm]
10; 12; 12,8



C [daN]
7 - 10



T [°C]
0° - 80°



RL-0.280		
Type	D	B
RL-0.280	28,0	7,6

Other dimensions on request!

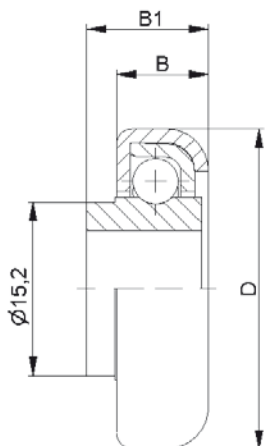
- ☛ Capsule: Steel, Zinc Plated
- ☛ Bearing Shell: Steel
- ☛ Ball: Steel
- ☛ Inner Race
 - ☛ Steel: C=10daN
 - ☛ Plastic: C=7daN; 0° - 80°



Carton [pcs.]

500

Radial Ball Bearings



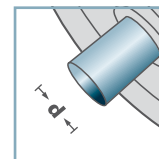
RL-0.280 with collar			
Type	D	B	B1
RL-0.280 m.B.	28,0	7,6	10,0

Other dimensions on request!

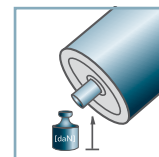
- ☛ Capsule: Steel, Zinc Plated
- ☛ Bearing Shell: Steel
- ☛ Ball, Steel
- ☛ Inner Race
 - ☛ Steel: C=10daN
 - ☛ Plastic: C=7daN; 0° - 80°



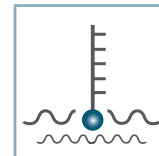
RL-0.280



10; 12; 12,8



C [daN]
7 - 10



T [°C]
0° - 80°



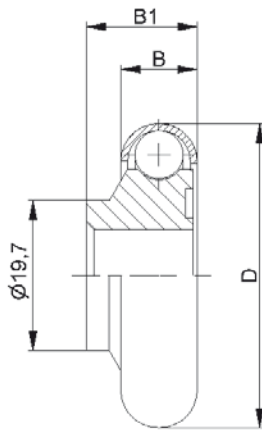
-



Carton [pcs.]

500

Radial Ball Bearings



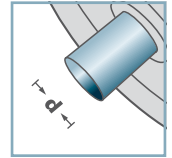
RL-0.400			
Type	D	B	B1
RL-0.400	40,0	10,0	14,5

Other dimensions on request!

- ☛ Capsule: Steel, Zinc Plated
- ☛ Ball: Steel
- ☛ Inner Race: Plastic



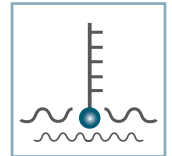
RL-0.400



d [mm]
10; 12



C [daN]
7



T [°C]
0° - 80°



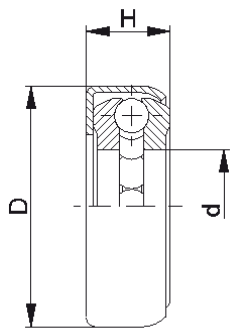
-



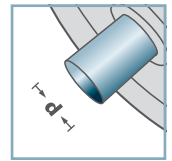
Carton [pcs.]

250

Radial Ball Bearings



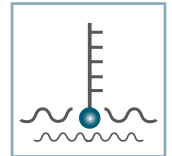
LL-



d [mm]
7; 8; 9; 10



C [daN]
450



T [°C]
-



-

LL-				
Type	d	D	H	Load Rating C [daN]
LL-1.073	7,2	15,0	7,0	20
LL-1.082	8,2	15,8	6,85	20
LL-1.083	8,3	17,5	6,2	20
LL-1.093	9,3	17,5	6,2	20
LL-1.103	10,3	17,5	6,2	22

Other dimensions on request!

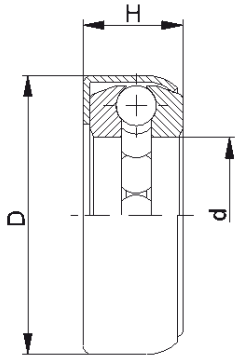
- ☛ Capsule: Steel
- ☛ Ball Race: Steel, hardened
- ☛ Ball: Steel



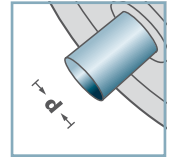
Carton [pcs.]

500

Pressed Thrust Bearings



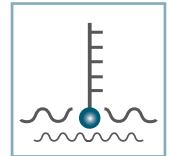
LL-



d [mm]
11; 12; 13; 14



C [daN]
450 - 600



T [°C]
-



-

LL-				
Type	d	D	H	Load Rating C [daN]
LL-1.113	11,3	20,0	7,0	22
LL-1.123	12,3	22,0	8,0	22
LL-1.133	13,3	22,0	8,0	22
LL-1.141	14,15	22,0	7,7	22

Other dimensions on request!

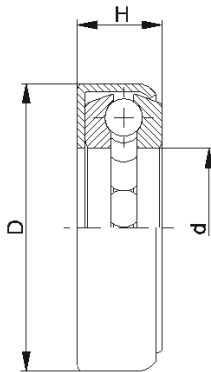
- ☛ Capsule: Steel
- ☛ Ball Race: Steel, hardened
- ☛ Ball: Steel



Carton [pcs.]

ø11: 500
ø12: 250
ø13: 250
ø14: 250

Pressed Thrust Bearings



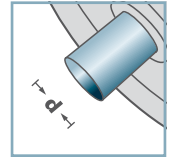
LL-				
Type	d	D	H	Load Rating C [daN]
LL-1.143	14,3	25,0	8,5	22
LL-1.163	16,4	27,0	9,0	24
LL-1.201	20,1	36,6	10,8	24

Other dimensions on request!

- ☛ Capsule: Steel
- ☛ Ball Race: Steel, hardened
- ☛ Ball: Steel



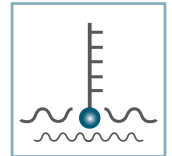
LL-



d [mm]
14; 16; 20



C [daN]
750



T [°C]
-



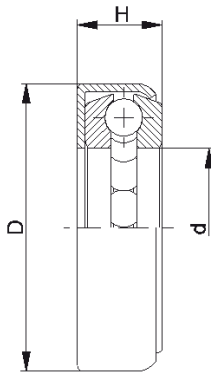
-



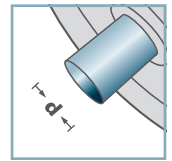
Carton [pcs.]

ø14: 200
ø16: 200
ø20: 350

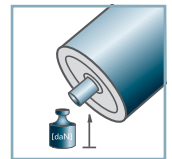
Pressed Thrust Bearings



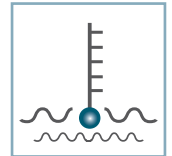
LL-



d [mm]
20; 22; 23;
24; 25; 26



C [daN]
240 - 260



T [°C]
-



-

LL-				
Type	d	D	H	Load Rating C [daN]
LL-1.203	20,4	33,0	10,0	26
LL-1.223	22,4	43,5	12,0	26
LL-1.233	23,4	43,5	12,0	26
LL-1.243	24,4	43,5	12,0	26
LL-1.253	25,4	43,5	12,0	26
LL-1.263	26,4	43,5	12,0	26

Other dimensions on request!

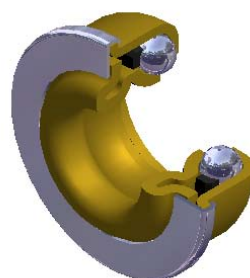
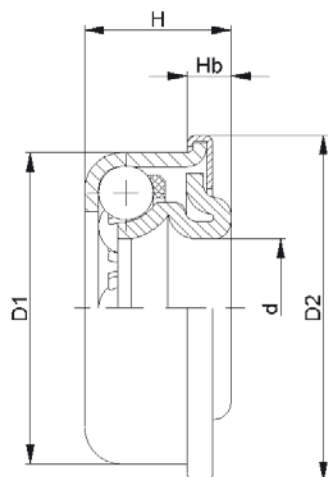
- ☪ Capsule: Steel
- ☪ Ball Race: Steel, hardened
- ☪ Ball: Steel



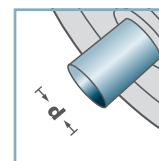
Carton [pcs.]

ø20:	100
ø22:	50
ø23:	50
ø24:	50
ø25:	50
ø26:	50

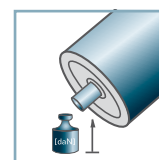
Pressed Thrust Bearings



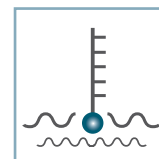
KL-



d [mm]
10; 12; 12,7; 14



C [daN]
30



T [°C]
0 - 80°



EP2

KL-					
Type	d	D1	D2	H	Hb
KL-4.10A	10,05	25,05	28,5	12,8	4,0
KL-4.12	12,05	27,05	30,2	12,2	3,8
KL-4.127	12,75	27,05	30,2	12,2	3,8
KL-4.14	14,05	27,05	30,2	12,0	3,6

Other dimensions on request!

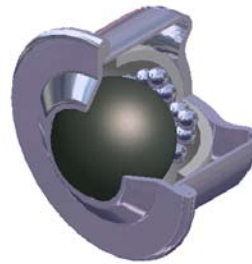
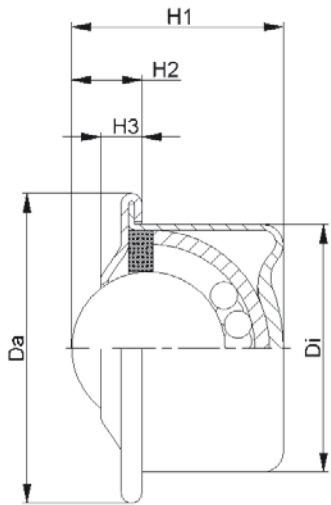
- ☛ Bearing Shell: Steel, Hardened
- ☛ Cone: Steel, Hardened
- ☛ Dust Cap: Steel, Zinc plated
- ☛ Cage: Plastic
- ☛ Ball: Steel



Carton [pcs.]

KL-4.10A: 500
KL-4.12: 1000
KL-4.127: 1000
KL-4.14: 1000

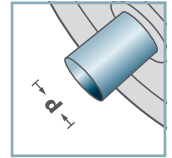
Cone Ball Bearings



KRO						
Type	Da	Di	H1	H2	H3	Load Rating C [daN]
KRO-015L	31,0	24,0	21,0	9,5	5,5	50
KRO-022L	45,0	36,0	30,5	10,0	6,0	120
KRO-015	31,0	24,0	21,0	9,5	5,5	120
KRO-022	45,0	36,0	30,5	10,0	6,0	350

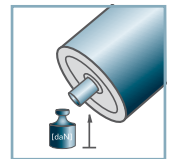


KRO-



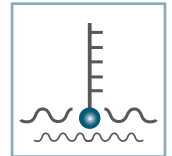
d [mm]

-



C [daN]

50 - 120



T [°C]

-30° - 100°



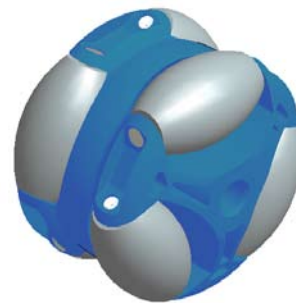
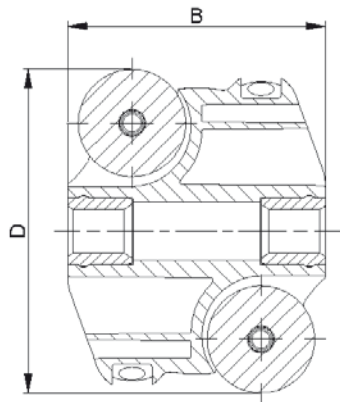
-



Carton [pcs.]

50

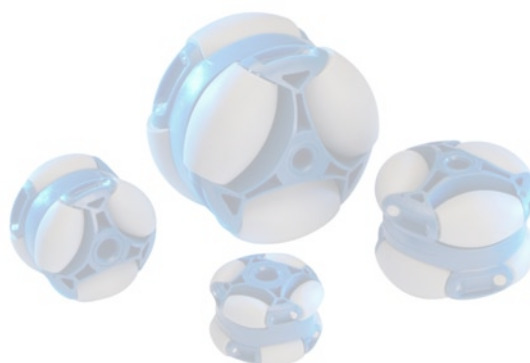
Ball Transfer Unit



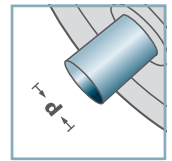
ASR-			
Type	D	B	Load Rating C [daN]
ASR-80	80	64	40

Other dimensions on request!

- ☛ Housing: Plastic
- ☛ Barrel-shaped Roller: Plastic
- ☛ Axis: 1.4301



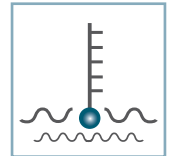
ASR-



d [mm]
8; 12;15; SW14



C [daN]
40



T [°C]
0° - 80°



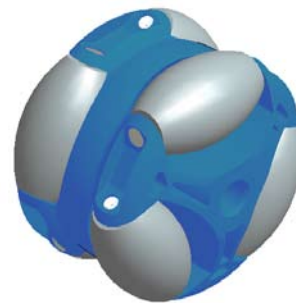
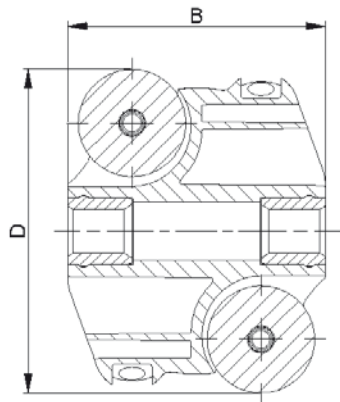
-



Carton [pcs.]

50

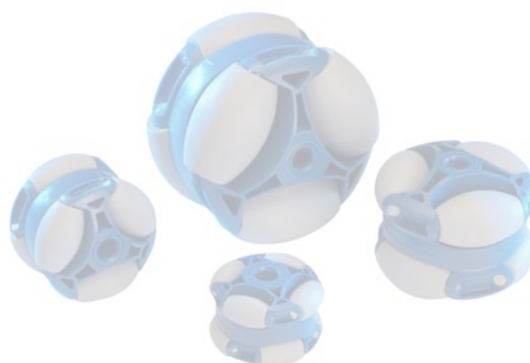
Polydirectional Wheel



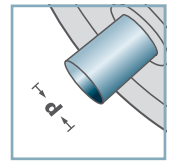
ASR-			
Type	D	B	Load Rating C [daN]
ASR-60	60	48	20
ASR-48	48	39	15
ASR-40	40	29	10

Other dimensions on request!

- ☛ Housing: Plastic
- ☛ Barrel-shaped Roller: Plastic
- ☛ Axis: 1.4301



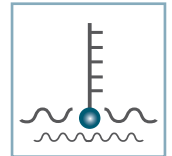
ASR-



d [mm]
8; 10; SW9



C [daN]
10 - 20



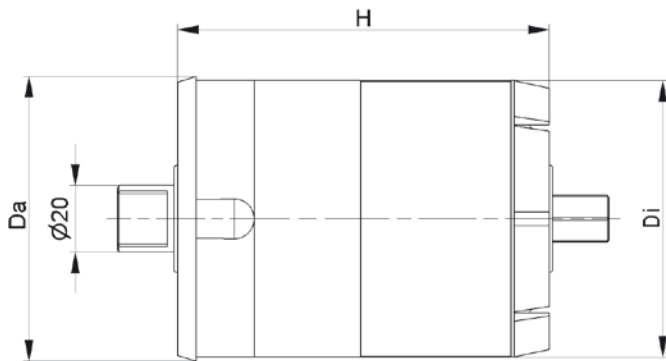
T [°C]
0° - 80°



Carton [pcs.]

50

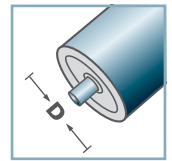
Polydirectional Wheel



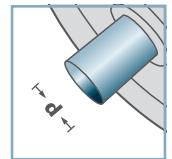
BR-89x3,0-				
Type	Da	Di	H	Load Rating [kg]
200	88,5	83	115	200
500	88,5	83	115	500
800	88,5	83	115	800
1200	88,5	83	115	1200



BR-



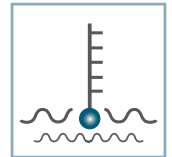
D [mm]
89



d [mm]
20



C [daN]
250



T [°C]
0° - 80°



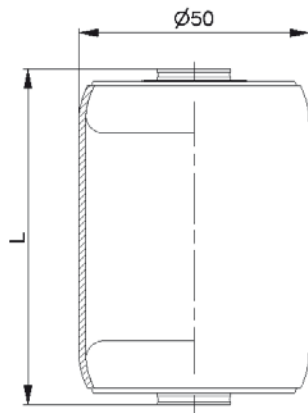
EP2



Carton [pcs.]

20

Brake Roller Unit



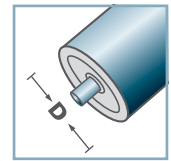
AMR-50x1,5.20		
Type	L	Load Rating C [daN]
AMR-50x1,5.20-66	66	160
AMR-50x1,5.20-73	73	160
AMR-50x1,5.20-80	80	160
AMR-50x1,5.20-100	100	160

Other dimensions on request!

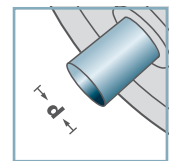
- ☪ Tube: Steel, Zinc plated
- ☪ Metal Roller Bearing MTR-20



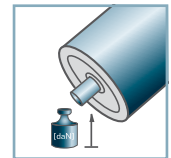
AMR-50.20



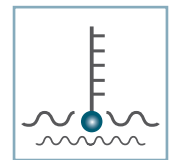
D [mm]
50



d [mm]
8; 10; 12; SW11



C [daN]
160



T [°C]
0° - 100°



Vactra No. 2



Carton [pcs.]

Metal Roller