

ART. C196

SOLID CONTROL HANDWHEEL

MATERIAL:
Reinforced and stabilised polyamide.
Oils and greases resistant.

SURFACE:
Satin.

COLOUR:
Black (RAL 9011).

CENTRAL CAP:
Grey polyamide (RAL 7035).

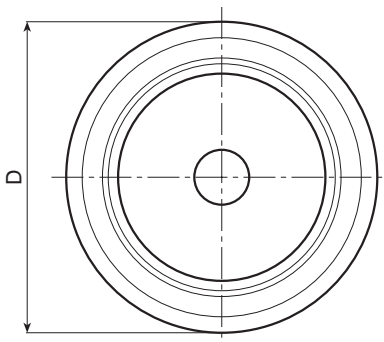
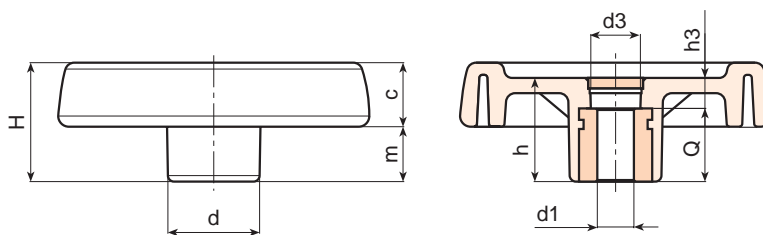
ALTERNATIVE CAP COLOUR:
Orange (RAL 2004 cod. 02).
Blue (RAL 5015 cod. 07).
Yellow (RAL 1021 cod. 10).
Red (RAL 3000 cod. 16).
Green (RAL 6024 cod. 17).
Black (RAL 9011 cod. 01).

MAIN INSERT:
Zinc plated steel right through bored bush with H7 tolerance.

For fixing systems, or execution of tabs or square holes, please refer to the technical notes attached to the catalogue.

SPECIAL REQUESTS:

- It is possible to supply the inserts with d1 diameter by customer design, on request and for quantities.
- It is possible to supply the inserts in different materials, on request and for quantities.
- It is possible to supply the inserts with different treatment-finishes, on request and for quantities.
- It is possible to supply the complete handwheels with colours as shown in the table at page 11, on request and for quantities.



Art.	D	H	h	d	m	c	d3	h3	d1 H7	Q	dm	Weight (gr)
C196080.TD0801P	81	33	29	25	16	17	16	9	5 H9	20	12	100
C196080.TD1001P	81	33	29	25	16	17	16	9	10	20	12	100
C196100.TD0801P	100	39	34	30	18,5	20,5	16	10	5 H9	24	16	192
C196100.TD1001P	100	39	34	30	18,5	20,5	16	10	10	24	16	190
C196125.TD0801P	125	44	37	36	20	24	26	13	5 H9	24	18	295
C196125.TD1201P	125	44	37	36	20	24	26	13	12	24	18	290
C196150.TD0801P	150	54	44	38	25	29	26	12	5 H9	32	22	520
C196150.TD1401P	150	54	44	38	25	29	26	12	14	32	22	505
C196175.TD0801P	173	57	47	40	25,5	31,5	26	15	5 H9	32	22	660
C196175.TD1601P	173	57	47	40	25,5	31,5	26	15	16	32	22	650
C196200.TD0801P	202	59	49	44	24	35	27	13	5 H9	36	28	870
C196200.TD2001P	202	59	49	44	24	35	27	13	20	36	28	855
C196250.TD0801P	249	68	58	59	29	39	36	22	5 H9	36	28	1420
C196250.TD2001P	249	68	58	59	29	39	36	22	20	36	28	1400

It's possible to increase the hole, by boring, until dm



BOTECA

SOLID CONTROL HANDWHEEL

MATERIAL:

Reinforced and stabilised polyamide.
Oils and greases resistant.

SURFACE:

Satin.

COLOUR:

Black (RAL 9011).

CENTRAL CAP:

Grey polyamide (RAL 7035 code 13).

ALTERNATIVE CAP COLOUR:

Orange (RAL 2004 code 02).
Blue (RAL 5015 code 07).
Yellow (RAL 1021 code 10).
Red (RAL 3000 code 16).
Green (RAL 6024 code 17).
Black (RAL 9011 code 01).

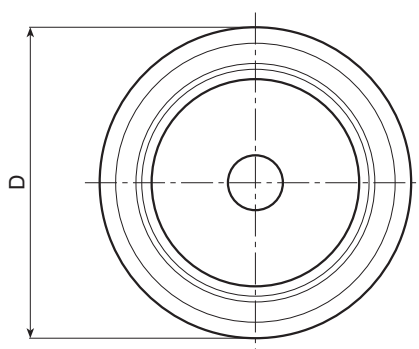
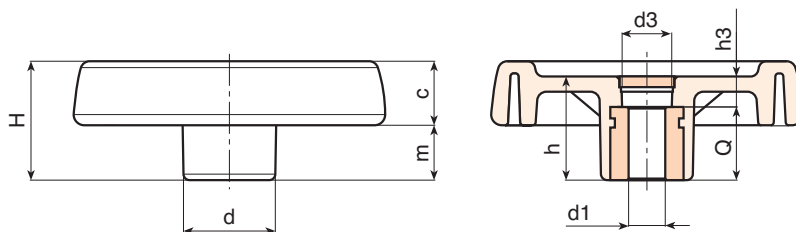
MAIN INSERT:

Zinc plated steel right through bored bush with H7 tolerance.

For fixing systems, or execution of tabs or square holes, please refer to the technical notes attached to the catalogue.

SPECIAL REQUESTS:

- It is possible to supply the inserts with d1 diameter by customer design, on request and for quantities.
- It is possible to supply the inserts in different materials, on request and for quantities.
- It is possible to supply the inserts with different treatment-finishes, on request and for quantities.
- It is possible to supply the complete handwheels with colours as shown in the table at page 11, on request and for quantities.



Art.	D	H	h	d	m	c	d3	h3	d1 H7	Q	dm	Weight (gr)
C196-80 D5/16	3,19	1,30	1,14	0,98	0,63	0,67	0,63	0,35	5/16	0,79	0,47	100
C196-80 D3/8	3,19	1,30	1,14	0,98	0,63	0,67	0,63	0,35	3/8	0,79	0,47	100
C196-100 D5/16	3,94	1,54	1,34	1,18	0,73	0,81	0,63	0,39	5/16	0,94	0,63	192
C196-100 D3/8	3,94	1,54	1,34	1,18	0,73	0,81	0,63	0,39	3/8	0,94	0,63	190
C196-125 D5/16	4,92	1,73	1,46	1,42	0,79	0,94	1,02	0,51	5/16	0,94	0,71	295
C196-125 D1/2	4,92	1,73	1,46	1,42	0,79	0,94	1,02	0,51	1/2	0,94	0,71	290
C196-150 D5/16	5,91	2,13	1,73	1,50	0,98	1,14	1,02	0,47	5/16	1,26	0,87	520
C196-150 D1/2	5,91	2,13	1,73	1,50	0,98	1,14	1,02	0,47	1/2	1,26	0,87	505
C196-175 D5/16	6,81	2,24	1,85	1,57	1,00	1,24	1,02	0,59	5/16	1,26	0,87	660
C196-175 D5/8	6,81	2,24	1,85	1,57	1,00	1,24	1,02	0,59	5/8	1,26	0,87	650
C196-200 D5/16	7,95	2,32	1,93	1,73	0,94	1,38	1,06	0,51	5/16	1,42	1,10	870
C196-200 D3/4	7,95	2,32	1,93	1,73	0,94	1,38	1,06	0,51	3/4	1,42	1,10	855
C196-250 D5/16	9,80	2,68	2,28	2,32	1,14	1,54	1,42	0,87	5/16	1,42	1,10	1420
C196-250 D3/4	9,80	2,68	2,28	2,32	1,14	1,54	1,42	0,87	3/4	1,42	1,10	1400

It's possible to increase the hole, by boring, until dm.



ART. C197

SOLID CONTROL HANDWHEEL WITH REVOLVING HANDLE

MATERIAL:
Reinforced and stabilised polyamide.
Oils and greases resistant.

SURFACE:
Satin.

HANDWHEEL AND HANDLE COLOUR:
Black (RAL 9011).

CENTRAL CAP:
Grey polyamide (RAL 7035).

ALTERNATIVE CAP COLOUR:
Orange (RAL 2004 cod. 02).
Blue (RAL 5015 cod. 07).
Yellow (RAL 1021 cod. 10).
Red (RAL 3000 cod. 16).
Green (RAL 6024 cod. 17).
Black (RAL 9011 cod. 01).

MAIN INSERT:
Zinc plated steel right through bored bush with H7 tolerance.

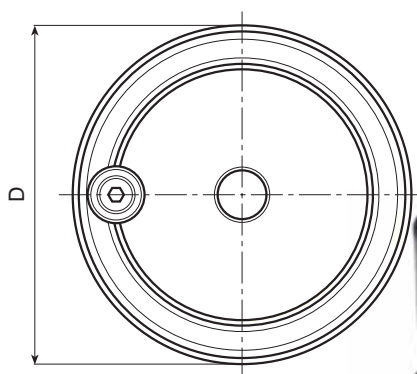
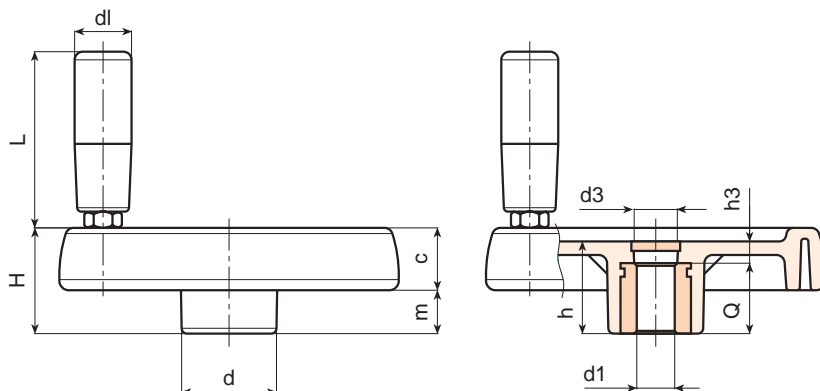
SIDE INSERT:
Brass right through threaded bush.

SIDE HANDLE:
Revolving handle Art. M144 (see chapter M on page 6).

For fixing systems, or execution of tabs square holes, please refer to the technical notes attached to the catalogue.

SPECIAL REQUESTS:

- It is possible to supply the inserts with d1 diameter by customer design, on request and for quantities.
- It is possible to supply the inserts in different materials, on request and for quantities.
- It is possible to supply the inserts with different treatment-finishes, on request and for quantities.
- It is possible to supply the complete handwheels with colours as shown in the table at page 11, on request and for quantities.



Art.	D	H	h	d	m	c	d3	h3	d1 H7	Q	dm	dl	L	Weight (gr)
C197080.TD0801P	81	33	29	25	16	17	16	9	5 H9	20	12	20	56	130
C197080.TD1001P	81	33	29	25	16	17	16	9	10	20	12	20	56	130
C197100.TD0801P	100	39	34	30	18,5	20,5	16	10	5 H9	24	16	20	56	192
C197100.TD1001P	100	39	34	30	18,5	20,5	16	10	10	24	16	20	56	190
C197125.TD0801P	125	44	37	36	20	24	26	13	5 H9	24	18	21	65	351
C197125.TD1201P	125	44	37	36	20	24	26	13	12	24	18	21	65	347
C197150.TD0801P	150	54	44	38	25	29	26	12	5 H9	32	22	23	76	588
C197150.TD1401P	150	54	44	38	25	29	26	12	14	32	22	23	76	573
C197175.TD0801P	173	57	47	40	25,5	31,5	26	15	5 H9	32	22	25	86	770
C197175.TD1601P	173	57	47	40	25,5	31,5	26	15	16	32	22	25	86	760
C197200.TD0801P	202	59	49	44	24	35	27	13	5 H9	36	28	25	86	980
C197200.TD2001P	202	59	49	44	24	35	27	13	20	36	28	25	86	965
C197250.TD0801P	249	68	58	59	29	39	36	22	5 H9	36	28	25	86	1530
C197250.TD2001P	249	68	58	59	29	39	36	22	20	36	28	25	86	1510

It's possible to increase the hole, by boring, until dm



BOTECA

OPTIONS



ART. C193



ART. C195



ART. C194



STANDARD ART. C SERIES



ART. C193

SOLID CONTROL HANDWHEEL REVOLVING HANDLE M145

Art.	D	d1	L	Weight (gr)	OTHER VALUES
C193-80	81	20	55	135	see table C197
C193-100	100	20	55	220	see table C197
C193-125	125	23	66	370	see table C197
C193-150	150	25	76	594	see table C197
C193-175	173	25	87	750	see table C197
C193-200	202	27	96	965	see table C197
C193-250	249	27	96	1500	see table C197

SIDE HANDLE:

Revolving handle Art. M145 (see chapter M page 8).

For details of the handwheel see those for art. C197.

ART. C194

SOLID CONTROL HANDWHEEL WITH REVOLVING HANDLE M129

Art.	D	d1	L	Weight (gr)	OTHER VALUES
C194-80	81	20	52	145	see table C197
C194-100	100	20	52	235	see table C197
C194-125	125	23	62	350	see table C197
C194-150	150	25	72	610	see table C197
C194-175	173	25	81	755	see table C197
C194-200	202	27	93	975	see table C197
C194-250	249	27	93	1520	see table C197

SIDE HANDLE:

Revolving handle Art. M129 (see chapter M page 9).

For details of the handwheel see those for art. C197.

ART. C195

SOLID CONTROL HANDWHEEL WITH REVOLVING HANDLE "EUROMODEL" M202

Art.	D	d1	L	Weight (gr)	OTHER VALUES
C195-150	150	40	64	610	see table C197
C195-175	173	40	64	750	see table C197
C195-200	202	40	64	960	see table C197
C195-250	249	40	64	1490	see table C197

SIDE HANDLE:

Revolving handle Art. M202 (see chapter M page 18).

For details of the handwheel see those for art. C197.



STANDARD ART. C SERIES

BASE FOR SOLID CONTROL HANDWHEEL WITH PROVISION FOR HANDLE

Art.	D	d1	side handle threading	Weight (gr)	OTHER VALUES
C80	81	5 H9	M6	100	see table C197
C100	100	5 H9	M6	190	see table C197
C125	125	5 H9	M8	290	see table C197
C150	150	5 H9	M10	520	see table C197
C175	173	5 H9	M10	660	see table C197
C200	202	5 H9	M10	870	see table C197
C250	249	5 H9	M10	1400	see table C197

This article is recommended for distributors.

For details of the handwheel see those for art. C197.



SOLID CONTROL HANDWHEEL WITH REVOLVING HANDLE

MATERIAL:

Reinforced and stabilised polyamide.
Oils and greases resistant.

SURFACE:

Satin.

HANDWHEEL AND HANDLE COLOUR:

Black (RAL 9011).

CENTRAL CAP:

Grey polyamide (RAL 7035 code 13).

ALTERNATIVE CAP COLOUR:

Orange (RAL 2004 code 02).
Blue (RAL 5015 code 07).
Yellow (RAL 1021 code 10).
Red (RAL 3000 code 16).
Green (RAL 6024 code 17).
Black (RAL 9011 code 01).

MAIN INSERT:

Zinc plated steel right through bored bush with H7 tolerance.

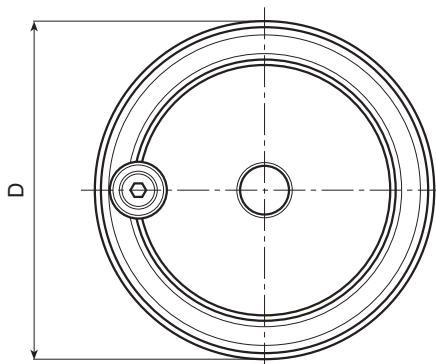
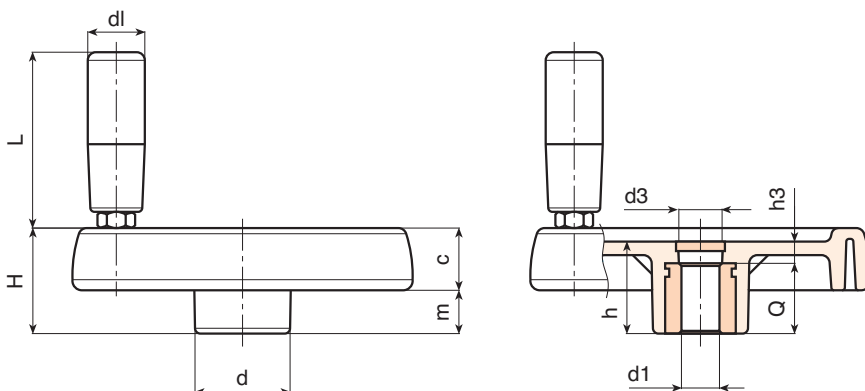
SIDE INSERT:

Brass right through threaded bush.

SIDE HANDLE:

Revolving handle Art. M144
(see chapter M on page 6).

For fixing systems, or execution of tabs square holes, please refer to the technical notes attached to the catalogue.



SPECIAL REQUESTS:

- It is possible to supply the inserts with d1 diameter by customer design, on request and for quantities.
- It is possible to supply the inserts in different materials, on request and for quantities.
- It is possible to supply the inserts with different treatment-finishes, on request and for quantities.
- It is possible to supply the complete handwheels with colours as shown in the table at page 11, on request and for quantities.

Art.	D	H	h	d	m	c	d3	h3	d1 H7	Q	dm	dl	L	Weight (gr)
C197-80 D5/16	3,19	1,30	1,14	0,98	0,63	0,67	0,63	0,35	5/16	0,79	0,47	0,79	2,20	130
C197-80 D3/4	3,19	1,30	1,14	0,98	0,63	0,67	0,63	0,35	3/8	0,79	0,47	0,79	2,20	130
C197-100 D5/16	3,94	1,54	1,34	1,18	0,73	0,81	0,63	0,39	5/16	0,94	0,63	0,79	2,20	192
C197-100 D3/4	3,94	1,54	1,34	1,18	0,73	0,81	0,63	0,39	3/8	0,94	0,63	0,79	2,20	190
C197-125 D5/16	4,92	1,73	1,46	1,42	0,79	0,94	1,02	0,51	5/16	0,94	0,71	0,83	2,56	351
C197-125 D3/4	4,92	1,73	1,46	1,42	0,79	0,94	1,02	0,51	1/2	0,94	0,71	0,83	2,56	347
C197-150 D5/16	5,91	2,13	1,73	1,50	0,98	1,14	1,02	0,47	5/16	1,26	0,87	0,91	2,99	588
C197-150 D3/4	5,91	2,13	1,73	1,50	0,98	1,14	1,02	0,47	1/2	1,26	0,87	0,91	2,99	573
C197-175 D5/16	6,81	2,24	1,85	1,57	1,00	1,24	1,02	0,59	5/16	1,26	0,87	0,98	3,99	770
C197-175 D3/4	6,81	2,24	1,85	1,57	1,00	1,24	1,02	0,59	5/8	1,26	0,87	0,98	3,99	760
C197-200 D5/16	7,95	2,32	1,93	1,73	0,94	1,38	1,06	0,51	5/16	1,42	1,10	0,98	3,99	980
C197-200 D3/4	7,95	2,32	1,93	1,73	0,94	1,38	1,06	0,51	3/4	1,42	1,10	0,98	3,99	965
C197-250 D5/16	9,80	2,68	2,28	2,32	1,14	1,54	1,42	0,87	5/16	1,42	1,10	0,98	3,99	1530
C197-250 D3/4	9,80	2,68	2,28	2,32	1,14	1,54	1,42	0,87	3/4	1,42	1,10	0,98	3,99	1510

It's possible to increase the hole, by boring, until dm.



OPTIONS



ART. C193

SOLID CONTROL HANDWHEEL REVOLVING HANDLE M145

Art.	D	d1	L	Weight (gr)	OTHER VALUES
C193-80	3,19	0,79	2,17	135	see table C197
C193-100	3,94	0,79	2,17	220	see table C197
C193-125	4,92	0,91	2,60	370	see table C197
C193-150	5,91	0,98	2,99	594	see table C197
C193-175	6,81	0,98	3,43	750	see table C197
C193-200	7,95	1,06	3,78	965	see table C197
C193-250	9,80	1,06	3,78	1500	see table C197

SIDE HANDLE:

Revolving handle Art. M145 (see chapter M page 8).

For details of the handwheel see those for art. C197.

ART. C194

SOLID CONTROL HANDWHEEL WITH REVOLVING HANDLE M129

Art.	D	d1	L	Weight (gr)	OTHER VALUES
C194-80	3,19	0,79	2,17	145	see table C197
C194-100	3,94	0,79	2,17	235	see table C197
C194-125	4,92	0,91	2,60	350	see table C197
C194-150	5,91	0,98	2,99	610	see table C197
C194-175	6,81	0,98	3,43	755	see table C197
C194-200	7,95	1,06	3,78	975	see table C197
C194-250	9,80	1,06	3,78	1520	see table C197

SIDE HANDLE:

Revolving handle Art. M129 (see chapter M page 9).

For details of the handwheel see those for art. C197.

ART. C195

SOLID CONTROL HANDWHEEL WITH REVOLVING HANDLE "EUROMODEL" M202

Art.	D	d1	L	Weight (gr)	OTHER VALUES
C195-150	5,91	1,57	2,52	610	see table C197
C195-175	6,81	1,57	2,52	750	see table C197
C195-200	7,95	1,57	2,52	960	see table C197
C195-250	9,80	1,57	2,52	1490	see table C197

SIDE HANDLE:

Revolving handle Art. M202 (see chapter M page 18).

For details of the handwheel see those for art. C197.

STANDARD ART. C SERIES

BASE FOR SOLID CONTROL HANDWHEEL WITH PROVISION FOR HANDLE

Art.	D	d1	side handle threading	Weight (gr)	OTHER VALUES
C80	3,19	5/16	M8	3,94	see table C197
C100	3,94	5/16	M8	7,48	see table C197
C125	4,92	5/16	M8	11,42	see table C197
C150	5,91	5/16	M10	20,47	see table C197
C175	6,81	5/16	M10	25,98	see table C197
C200	7,95	5/16	M10	34,25	see table C197
C250	9,80	5/16	M10	55,12	see table C197

This article is recommended for distributors.

For details of the handwheel see those for art. C197.



BOTECA



Usa version

ART. C198

SOLID CONTROL HANDWHEEL WITH REVOLVING FOLDING HANDLE

MATERIAL:
Reinforced and stabilised polyamide.
Oils and greases resistant.

SURFACE:
Satin.

HANDWHEEL AND HANDLE COLOUR:
Black (RAL 9011).

CENTRAL CAP:
Grey polyamide (RAL 7035).

ALTERNATIVE CAP COLOUR:
Orange (RAL 2004 cod. 02).
Blue (RAL 5015 cod. 07).
Yellow (RAL 1021 cod. 10).
Red (RAL 3000 cod. 16).
Green (RAL 6024 cod. 17).
Black (RAL 9011 cod. 01).

MAIN INSERT:
Zinc plated steel right through bored bush with H7 tolerance.

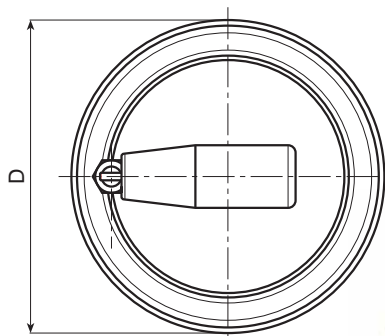
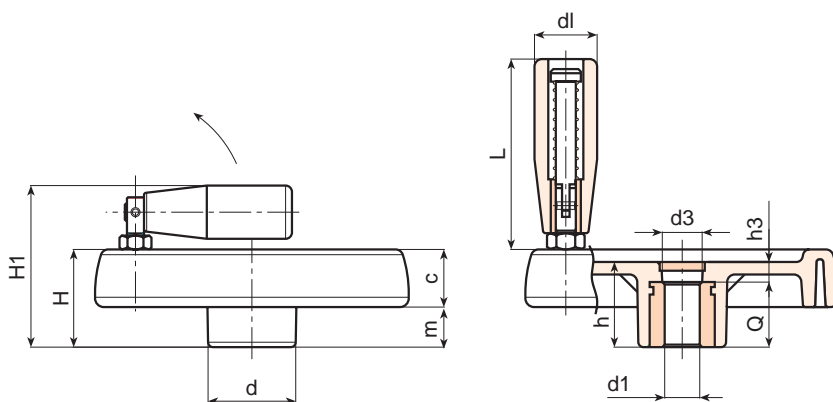
SIDE INSERT:
Brass right through threaded bush.

SIDE HANDLE:
Revolving handle and folding Art. M136 (see chapter M on page 10).

For fixing systems, or execution of tabs or square holes, please refer to the technical notes attached to the catalogue.

SPECIAL REQUESTS:

- It is possible to supply the inserts with d1 diameter by customer design, on request and for quantities.
- It is possible to supply the inserts in different materials, on request and for quantities.
- It is possible to supply the inserts with different treatment-finishes, on request and for quantities.
- It is possible to supply the complete handwheels with colours as shown in the table at page 11, on request and for quantities.



Art.	D	H	H1	h	d	m	c	d3	h3	d1 H7	Q	dm	d1	L	Weight (gr)
C198080.TD0801P	81	33	57	29	25	16	17	16	9	5 H9	20	12	20	56	145
C198080.TD1001P	81	33	57	29	25	16	17	16	9	10	20	12	20	56	142
C198100.TD0801P	100	39	63	34	30	18,5	20,5	16	10	5 H9	24	16	20	56	235
C198100.TD1001P	100	39	63	34	30	18,5	20,5	16	10	10	24	16	20	56	232
C198125.TD0801P	125	44	74	37	36	20	24	26	13	5 H9	24	18	25	76	360
C198125.TD1201P	125	44	74	37	36	20	24	26	13	12	24	18	25	76	355
C198150.TD0801P	150	54	89	44	38	25	29	26	12	5 H9	32	22	26	89	670
C198150.TD1401P	150	54	89	44	38	25	29	26	12	14	32	22	26	89	660
C198175.TD0801P	173	57	92	47	40	25,5	31,5	26	15	5 H9	32	22	26	97	810
C198175.TD1601P	173	57	92	47	40	25,5	31,5	26	15	16	32	22	26	97	800
C198200.TD0801P	202	59	94	49	44	24	35	27	13	5 H9	36	28	26	97	1030
C198200.TD2001P	202	59	94	49	44	24	35	27	13	20	36	28	26	97	1015
C198250.TD0801P	249	68	100	58	59	29	39	36	22	5 H9	36	28	26	97	1580
C198250.TD2001P	249	68	100	58	59	29	39	36	22	20	36	28	26	97	1567

It's possible to increase the hole, by boring, until dm



BOTECA

SOLID CONTROL HANDWHEEL WITH REVOLVING FOLDING HANDLE

MATERIAL:

Reinforced and stabilised polyamide.
Oils and greases resistant.

SURFACE:

Satin.

HANDWHEEL AND HANDLE COLOUR:

Black (RAL 9011).

CENTRAL CAP:

Grey polyamide (RAL 7035 code 13).

ALTERNATIVE CAP COLOUR:

Orange (RAL 2004 code 02).
Blue (RAL 5015 code 07).
Yellow (RAL 1021 code 10).
Red (RAL 3000 code 16).
Green (RAL 6024 code 17).
Black (RAL 9011 code 01).

MAIN INSERT:

Zinc plated steel right through bored bush with H7 tolerance.

SIDE INSERT:

Brass right through threaded bush.

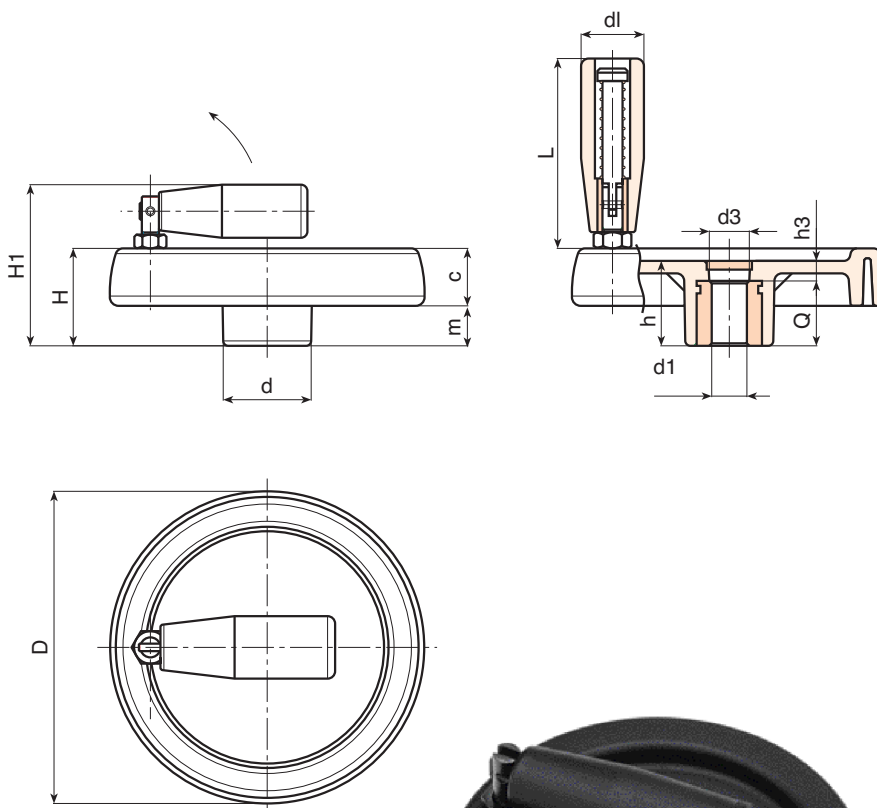
SIDE HANDLE:

Revolving handle and folding Art. M136 (see chapter M on page 10).

For fixing systems, or execution of tabs or square holes, please refer to the technical notes attached to the catalogue.

SPECIAL REQUESTS:

- It is possible to supply the inserts with d1 diameter by customer design, on request and for quantities.
- It is possible to supply the inserts in different materials, on request and for quantities.
- It is possible to supply the inserts with different treatment-finishes, on request and for quantities.
- It is possible to supply the complete handwheels with colours as shown in the table at page 11, on request and for quantities.



Art.	D	H	H1	h	d	m	c	d3	h3	d1 H7	Q	dm	dl	L	Weight (gr)
C198-80 D5/16	3,19	1,30	2,24	1,14	0,98	0,63	0,67	0,63	0,35	5/16	0,79	0,47	0,79	2,20	145
C198-80 D3/8	3,19	1,30	2,24	1,14	0,98	0,63	0,67	0,63	0,35	3/8	0,79	0,47	0,79	2,20	142
C198-100 D5/16	3,94	1,54	2,48	1,34	1,18	0,73	0,81	0,63	0,39	5/16	0,94	0,63	0,79	2,20	235
C198-100 D3/8	3,94	1,54	2,48	1,34	1,18	0,73	0,81	0,63	0,39	3/8	0,94	0,63	0,79	2,20	232
C198-125 D5/16	4,92	1,73	2,91	1,46	1,42	0,79	0,94	1,02	0,51	5/16	0,94	0,71	0,98	2,99	360
C198-125 D1/2	4,92	1,73	2,91	1,46	1,42	0,79	0,94	1,02	0,51	1/2	0,94	0,71	0,98	2,99	355
C198-150 D5/16	5,91	2,13	3,50	1,73	1,50	0,98	1,14	1,02	0,47	5/16	1,26	0,87	1,02	3,50	670
C198-150 D1/2	5,91	2,13	3,50	1,73	1,50	0,98	1,14	1,02	0,47	1/2	1,26	0,87	1,02	3,50	660
C198-175 D5/16	6,81	2,24	3,62	1,85	1,57	1,00	1,24	1,02	0,59	5/16	1,26	0,87	1,02	3,82	810
C198-175 D5/8	6,81	2,24	3,62	1,85	1,57	1,00	1,24	1,02	0,59	5/8	1,26	0,87	1,02	3,82	800
C198-200 D5/16	7,95	2,32	3,70	1,93	1,73	0,94	1,38	1,06	0,51	5/16	1,42	1,10	1,02	3,82	1030
C198-200 D3/4	7,95	2,32	3,70	1,93	1,73	0,94	1,38	1,06	0,51	3/4	1,42	1,10	1,02	3,82	1015
C198-250 D5/16	9,80	2,68	3,94	2,28	2,32	1,14	1,54	1,42	0,87	5/16	1,42	1,10	1,02	3,82	1580
C198-250 D3/4	9,80	2,68	3,94	2,28	2,32	1,14	1,54	1,42	0,87	3/4	1,42	1,10	1,02	3,82	1567

It's possible to increase the hole, by boring, until dm.



ART. C199

SOLID CONTROL HANDWHEEL WITH FOLDAWAY REVOLVING HANDLE

MATERIAL:

Reinforced and stabilised polyamide.
Oils and greases resistant.

SURFACE:

Satin.

HANDWHEEL AND HANDLE COLOUR:

Black (RAL 9011).

CENTRAL CAP:

Grey polyamide (RAL 7035).

MAIN INSERT:

Zinc plated steel right through bored bush with H7 tolerance.

SIDE HANDLE:

Flush, foldaway revolving handle,
with hexagonal connection.

Reinforced polyamide handle.

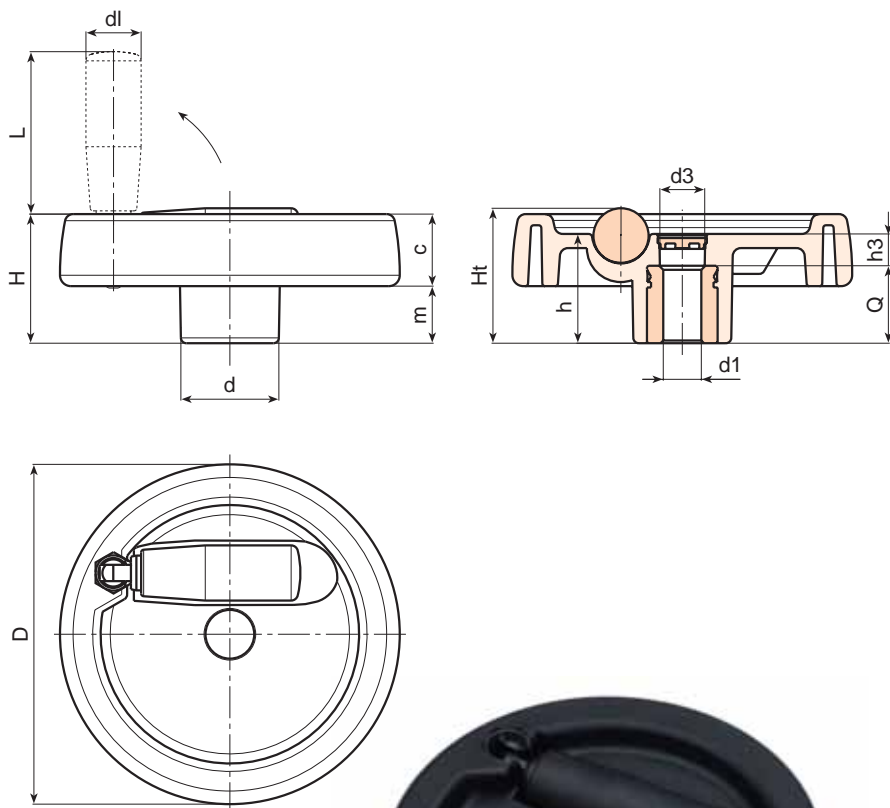
Black-oxide treated internal mechanism.

Fixed with black-oxide treated hexagon socket button
head screw ISO 7838.

For fixing systems, or execution of tabs or square
holes, please refer to the technical notes attached to
the catalogue.

SPECIAL REQUESTS:

- It is possible to supply the inserts with d1 diameter by customer design, on request and for quantities.
- It is possible to supply the inserts in different materials, on request and for quantities.
- It is possible to supply the inserts with different treatment-finishes, on request and for quantities.
- It is possible to supply the complete handwheels with colours as shown in the table at page 11, on request and for quantities.



Art.	D	H	Ht	h	d	m	c	h3	d3	d1 H7	Q	dm	dl	L	Weight (gr)
C199125.TD0801P	124	48	49,5	40	36	21,5	26,5	16	15	5 H9	24	18	20	38	349
C199125.TD1201P	124	48	49,5	40	36	21,5	26,5	16	15	12	24	18	20	38	343
C199150.TD0801P	149	53	-	44	38	24,5	28,5	12	26	5 H9	32	22	20	58	500
C199150.TD1401P	149	53	-	44	38	24,5	28,5	12	26	14	32	22	20	58	492
C199175.TD0801P	174	58	-	48	40	24,5	33,5	16	26	5 H9	32	28	26	80	715
C199175.TD1601P	174	58	-	48	40	24,5	33,5	16	26	16	32	28	26	80	705
C199200.TD0801P	198	63	-	53	44	24,5	38,5	17	26	5 H9	36	28	27	90	1015
C199200.TD2001P	198	63	-	53	44	24,5	38,5	17	26	20	36	28	27	90	1000
C199250.TD0801P	250	67	-	58	60	29	38	22	36	5 H9	36	28	27	90	1500
C199250.TD2001P	250	67	-	58	60	29	38	22	36	20	36	28	27	90	1485

It's possible to increase the hole, by boring, until dm



BOTECA

SOLID CONTROL HANDWHEEL WITH FOLDAWAY REVOLVING HANDLE

MATERIAL:

Reinforced and stabilised polyamide.
Oils and greases resistant.

SURFACE:

Satin.

HANDWHEEL AND HANDLE COLOUR:

Black (RAL 9011).

CENTRAL CAP:

Grey polyamide (RAL 7035 code 13).

MAIN INSERT:

Zinc plated steel right through bored bush with H7 tolerance.

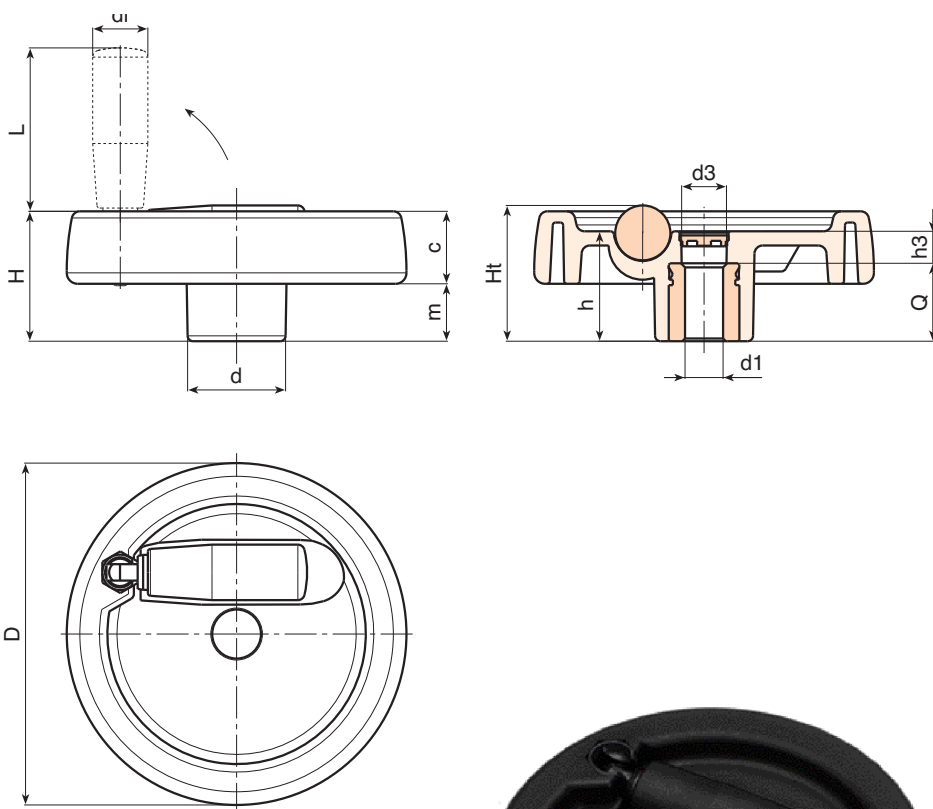
SIDE HANDLE:

Flush, foldaway revolving handle, with hexagonal connection. Reinforced polyamide handle. Black-oxide treated internal mechanism. Fixed with black-oxide treated hexagon socket button head screw ISO 7838.

For fixing systems, or execution of tabs or square holes, please refer to the technical notes attached to the catalogue.

SPECIAL REQUESTS:

- It is possible to supply the inserts with d1 diameter by customer design, on request and for quantities.
- It is possible to supply the inserts in different materials, on request and for quantities.
- It is possible to supply the inserts with different treatment-finishes, on request and for quantities.
- It is possible to supply the complete handwheels with colours as shown in the table at page 11, on request and for quantities.



Art.	D	H	Ht	h	d	m	c	h3	d3	d1 H7	Q	dm	dl	L	Weight (gr)
C199-125 D5/16	4,88	1,89	1,95	1,57	1,42	0,85	1,04	0,63	0,59	5/16	0,94	0,71	0,79	1,50	349
C199-125 D1/2	4,88	1,89	1,95	1,57	1,42	0,85	1,04	0,63	0,59	1/2	0,94	0,71	0,79	1,50	343
C199-150 D5/16	5,87	2,09	-	1,73	1,50	0,96	1,12	0,47	1,02	5/16	1,26	0,87	0,79	2,28	500
C199-150 D1/2	5,87	2,09	-	1,73	1,50	0,96	1,12	0,47	1,02	1/2	1,26	0,87	0,79	2,28	492
C199-175 D5/16	6,85	2,28	-	1,89	1,57	0,96	1,32	0,63	1,02	5/16	1,26	1,10	1,02	3,15	715
C199-175 D5/8	6,85	2,28	-	1,89	1,57	0,96	1,32	0,63	1,02	5/8	1,26	1,10	1,02	3,15	705
C199-200 D5/16	7,80	2,48	-	2,09	1,73	0,96	1,52	0,67	1,02	5/16	1,42	1,10	1,06	3,54	1015
C199-200 D3/4	7,80	2,48	-	2,09	1,73	0,96	1,52	0,67	1,02	3/4	1,42	1,10	1,06	3,54	1000
C199-250 D5/16	9,84	2,64	-	2,28	2,36	1,14	1,50	0,87	1,42	5/16	1,42	1,10	1,06	3,54	1500
C199-250 D3/4	9,84	2,64	-	2,28	2,36	1,14	1,50	0,87	1,42	3/4	1,42	1,10	1,06	3,54	1485

It's possible to increase the hole, by boring, until **dm**.



ART. C970

SOLID CONTROL HANDWHEEL WITH REVOLVING HANDLE AND LOCKING HANDWHEEL

MATERIAL:
Reinforced and stabilised polyamide.
Oils and greases resistant.

SURFACE:
Satin.

HANDWHEEL AND HANDLE COLOUR:
Black (RAL 9011).

CENTRAL CAP:
Grey polyamide (RAL 7035).

MAIN INSERT:
Zinc plated steel right through bored bush with H7 tolerance.

SIDE INSERT:
Brass right through threaded bush.

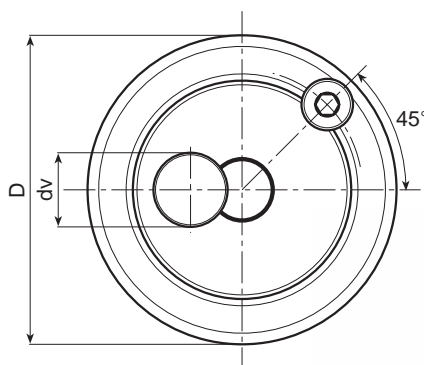
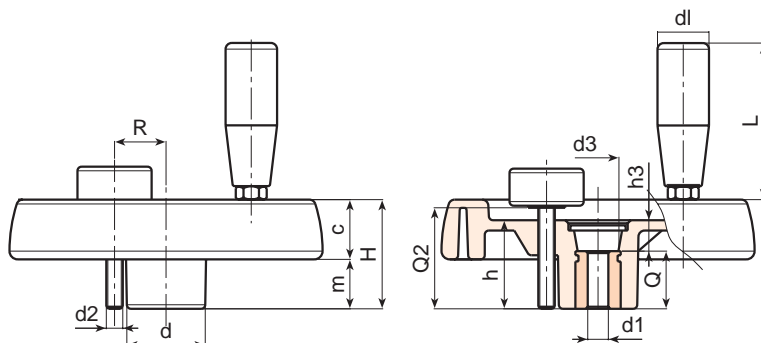
SIDE HANDLE:
Revolving handle Art. M144 (see chapter M on page 6).

LOCKING HANDWHEEL:
Cylindrical handwheel G793-36 with threaded stud (see chapter G page 12). Black (RAL 9011).
Caution: the R and Q2 dimensions of the handwheel must be chosen by the customer according to the dimensions of the machinery on which it will be installed.

For fixing systems, or execution of tabs or square holes, please refer to the technical notes attached to the catalogue.

SPECIAL REQUESTS:

- It is possible to supply the inserts with d1 diameter by customer design, on request and for quantities.
- It is possible to supply the inserts in different materials, on request and for quantities.
- It is possible to supply the inserts with different treatment-finishes, on request and for quantities.
- It is possible to supply the complete handwheels with colours as shown in the table at page 11, on request and for quantities.



Art.	D	H	h	d	m	c	d3	h3	R	d2	Q2	d1 H7	Q	dm	dl	L	Weight (gr)
C970100.TD0801P	100	39	34	30	18,5	20,5	16	10	20	M6	A.R.	5 H9	24	16	20	56	252
C970100.TD1001P	100	39	34	30	18,5	20,5	16	10	20	M6	A.R.	10	24	16	20	56	250
C970125.TD0801P	125	44	37	36	20	24	26	13	22÷25	M6	A.R.	5 H9	24	18	21	65	410
C970125.TD1201P	125	44	37	36	20	24	26	13	22÷25	M6	A.R.	12	24	18	21	65	407
C970150.TD0801P	150	54	44	38	25	29	26	12	25÷28	M8	A.R.	5 H9	32	22	21	65	636
C970150.TD1401P	150	54	44	38	25	29	26	12	25÷28	M8	A.R.	14	32	22	21	65	625
C970175.TD0801P	173	57	47	40	25,5	31,5	26	15	26÷36	M8	A.R.	5 H9	32	22	23	76	812
C970175.TD1601P	173	57	47	40	25,5	31,5	26	15	26÷36	M8	A.R.	16	32	22	23	76	802
C970200.TD0801P	202	59	49	44	24	35	27	13	28÷42	M8	A.R.	5 H9	36	28	25	86	1040
C970200.TD2001P	202	59	49	44	24	35	27	13	28÷42	M8	A.R.	20	36	28	25	86	1025
C970250.TD0801P	249	68	58	59	29	39	36	22	36÷50	M8	A.R.	5 H9	36	28	25	86	1590
C970250.TD2001P	249	68	58	59	29	39	36	22	36÷50	M8	A.R.	20	36	28	25	86	1570

dv = 36 mm

It's possible to increase the hole, by boring, until dm

A.R. = Upon Request



BOTECA

SOLID CONTROL HANDWHEEL WITH REVOLVING HANDLE AND LOCKING HANDWHEEL

MATERIAL:

Reinforced and stabilised polyamide.
Oils and greases resistant.

SURFACE:

Satin.

HANDWHEEL AND HANDLE COLOUR:

Black (RAL 9011).

CENTRAL CAP:

Grey polyamide (RAL 7035 code 13).

MAIN INSERT:

Zinc plated steel right through bored bush with H7 tolerance.

SIDE INSERT:

Brass right through threaded bush.

SIDE HANDLE:

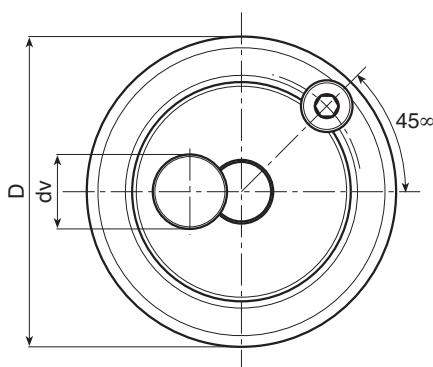
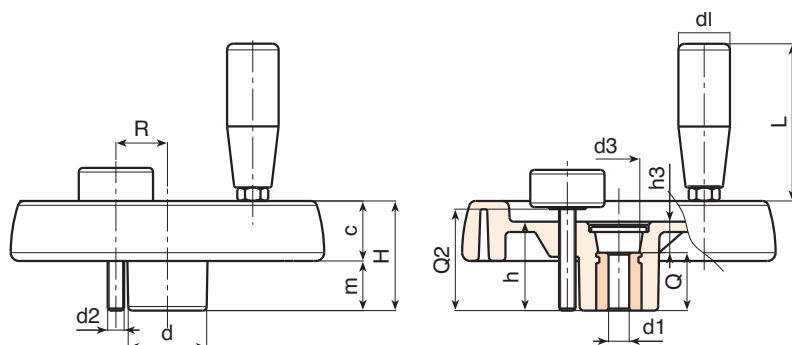
Revolving handle Art. M144 (see chapter M on page 6).

LOCKING HANDWHEEL:

Cylindrical handwheel G793-36 with threaded stud (see chapter G page 12). Black (RAL 9011).

Caution: the R and Q2 dimensions of the handwheel must be chosen by the customer according to the dimensions of the machinery on which it will be installed.

For fixing systems, or execution of tabs or square holes, please refer to the technical notes attached to the catalogue.



SPECIAL REQUESTS:

- It is possible to supply the inserts with d1 diameter by customer design, on request and for quantities.
- It is possible to supply the inserts in different materials, on request and for quantities.
- It is possible to supply the inserts with different treatment-finishes, on request and for quantities.
- It is possible to supply the complete handwheels with colours as shown in the table at page 11, on request and for quantities.

Art.	D	H	h	d	m	c	d3	h3	R	d2	Q2	d1 H7	Q	dm	dl	L	Weight (gr)
C970-100 D5/16	3,94	1,54	1,34	1,18	0,73	0,81	0,63	0,39	0,79	M6	A.R.	5/16	0,94	0,63	0,79	2,20	252
C970-100 D3/8	3,94	1,54	1,34	1,18	0,73	0,81	0,63	0,39	0,79	M6	A.R.	3/8	0,94	0,63	0,79	2,20	250
C970-125 D5/16	4,92	1,73	1,46	1,42	0,79	0,94	1,02	0,51	0,87±0,98	M6	A.R.	5/16	0,94	0,71	0,83	2,56	410
C970-125 D1/2	4,92	1,73	1,46	1,42	0,79	0,94	1,02	0,51	0,87±0,98	M6	A.R.	1/2	0,94	0,71	0,83	2,56	407
C970-150 D5/16	5,91	2,13	1,73	1,50	0,98	1,14	1,02	0,47	0,98±1,10	M8	A.R.	5/16	1,26	0,87	0,83	2,56	636
C970-150 D1/2	5,91	2,13	1,73	1,50	0,98	1,14	1,02	0,47	0,98±1,10	M8	A.R.	1/2	1,26	0,87	0,83	2,56	625
C970-175 D5/16	6,81	2,24	1,85	1,57	1,00	1,24	1,02	0,59	1,02±1,42	M8	A.R.	5/16	1,26	0,87	0,91	2,99	812
C970-175 D5/8	6,81	2,24	1,85	1,57	1,00	1,24	1,02	0,59	1,02±1,42	M8	A.R.	5/8	1,26	0,87	0,91	2,99	802
C970-200 D5/16	7,95	2,32	1,93	1,73	0,94	1,38	1,06	0,51	1,10±1,65	M8	A.R.	5/16	1,42	1,10	0,98	3,39	1040
C970-200 D3/4	7,95	2,32	1,93	1,73	0,94	1,38	1,06	0,51	1,10±1,65	M8	A.R.	3/4	1,42	1,10	0,98	3,39	1025
C970-250 D5/16	9,80	2,68	2,28	2,32	1,14	1,54	1,42	0,87	1,42±1,97	M8	A.R.	5/16	1,42	1,10	0,98	3,39	1590
C970-250 D3/4	9,80	2,68	2,28	2,32	1,14	1,54	1,42	0,87	1,42±1,97	M8	A.R.	3/4	1,42	1,10	0,98	3,39	1570

dv= 36 hadune.

It's possible to increase the hole, by boring, until dm.

A.R.= Upon Request.



ART. C980

SOLID CONTROL HANDWHEEL WITH REVOLVING FOLDING HANDLE AND LOCKING HANDWHEEL

MATERIAL:
Reinforced and stabilised polyamide.
Oils and greases resistant.

SURFACE:
Satin.

HANDWHEEL AND HANDLE COLOUR:
Black (RAL 9011).

CENTRAL CAP:
Grey polyamide (RAL 7035).

MAIN INSERT:
Zinc plated steel right through bored bush with H7 tolerance.

SIDE INSERT:
Brass right through threaded bush.

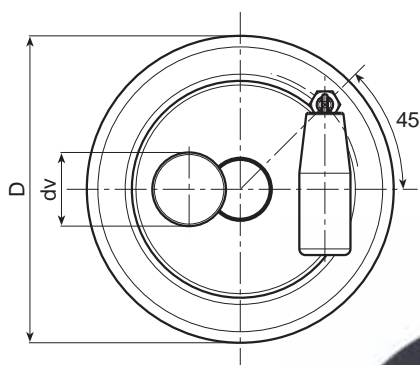
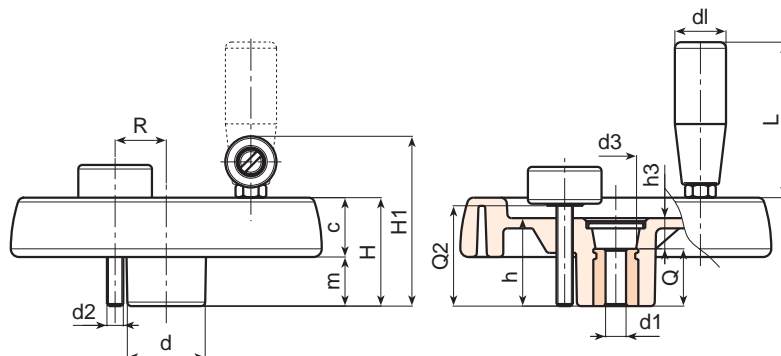
SIDE HANDLE:
Revolving handle and folding Art. M136 (see chapter M on page 10).

LOCKING HANDWHEEL:
Cylindrical handwheel G793-36 with threaded stud (see chapter G page 12). Black (RAL 9011).
Caution: the R and Q2 dimensions of the handwheel must be chosen by the customer according to the dimensions of the machinery on which it will be installed.

For fixing systems, or execution of tabs or square holes, please refer to the technical notes attached to the catalogue.

SPECIAL REQUESTS:

- It is possible to supply the inserts with d1 diameter by customer design, on request and for quantities.
- It is possible to supply the inserts in different materials, on request and for quantities.
- It is possible to supply the inserts with different treatment-finishes, on request and for quantities.
- It is possible to supply the complete handwheels with colours as shown in the table at page 11, on request and for quantities.



Art.	D	H	H1	h	d	m	c	d3	h3	R	d2	Q2	d1 H7	Q	dm	dl	L	Weight (gr)
C980100.TD0801P	100	39	63	34	30	18,5	20,5	16	10	20	M6	A.R.	5 H9	24	16	20	56	295
C980100.TD1001P	100	39	63	34	30	18,5	20,5	16	10	20	M6	A.R.	10	24	16	20	56	292
C980125.TD0801P	125	44	74	37	36	20	24	26	13	22÷25	M6	A.R.	5 H9	24	18	25	76	420
C980125.TD1201P	125	44	74	37	36	20	24	26	13	22÷25	M6	A.R.	12	24	18	25	76	415
C980150.TD0801P	150	54	89	44	38	25	29	26	12	25÷28	M8	A.R.	5 H9	32	22	26	89	730
C980150.TD1401P	150	54	89	44	38	25	29	26	12	25÷28	M8	A.R.	14	32	22	26	89	725
C980175.TD0801P	173	57	92	47	40	25,5	31,5	26	15	26÷36	M8	A.R.	5 H9	32	22	26	89	885
C980175.TD1601P	173	57	92	47	40	25,5	31,5	26	15	26÷36	M8	A.R.	16	32	22	26	89	875
C980200.TD0801P	202	59	94	49	44	24	35	27	13	28÷42	M8	A.R.	5 H9	36	28	26	97	1100
C980200.TD2001P	202	59	94	49	44	24	35	27	13	28÷42	M8	A.R.	20	36	28	26	97	1090
C980250.TD0801P	249	68	100	58	59	29	39	36	22	36÷50	M8	A.R.	5 H9	36	28	26	97	1640
C980250.TD2001P	249	68	100	58	59	29	39	36	22	36÷50	M8	A.R.	20	36	28	26	97	1627

dv = 36 mm

It's possible to increase the hole, by boring, until dm

A.R. = Upon Request



BOTECA

SOLID CONTROL HANDWHEEL WITH REVOLVING FOLDING HANDLE AND LOCKING HANDWHEEL

MATERIAL:

Reinforced and stabilised polyamide.
Oils and greases resistant.

SURFACE:

Satin.

HANDWHEEL AND HANDLE COLOUR:

Black (RAL 9011).

CENTRAL CAP:

Grey polyamide (RAL 7035 code 13).

MAIN INSERT:

Zinc plated steel right through bored bush with H7 tolerance.

SIDE INSERT:

Brass right through threaded bush.

SIDE HANDLE:

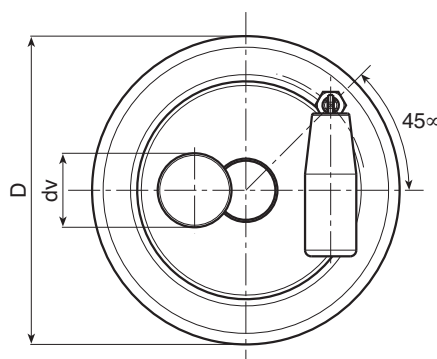
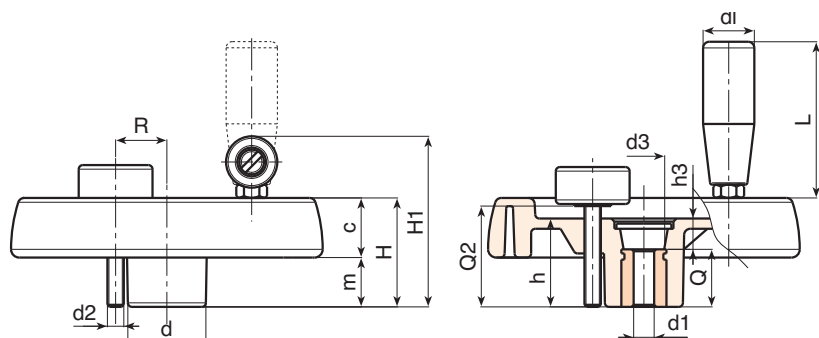
Revolving handle and folding Art. M136 (see chapter M on page 10).

LOCKING HANDWHEEL:

Cylindrical handwheel G793-36 with threaded stud (see chapter G page 12). Black (RAL 9011).

Caution: the R and Q2 dimensions of the handwheel must be chosen by the customer according to the dimensions of the machinery on which it will be installed.

For fixing systems, or execution of tabs or square holes, please refer to the technical notes attached to the catalogue.



SPECIAL REQUESTS:

- It is possible to supply the inserts with d1 diameter by customer design, on request and for quantities.
- It is possible to supply the inserts in different materials, on request and for quantities.
- It is possible to supply the inserts with different treatment-finishes, on request and for quantities.
- It is possible to supply the complete handwheels with colours as shown in the table at page 11, on request and for quantities.

Art.	D	H	H1	h	d	m	c	d3	h3	R	d2	Q2	d1 H7	Q	dm	dl	L	Weight (gr)
C980-100 D5/16	3,94	1,54	2,48	1,34	1,18	0,73	0,81	0,63	0,39	0,79	M6	A.R.	5/16	0,94	0,63	0,79	2,20	295
C980-100 D3/8	3,94	1,54	2,48	1,34	1,18	0,73	0,81	0,63	0,39	0,79	M6	A.R.	3/8	0,94	0,63	0,79	2,20	292
C980-125 D5/16	4,92	1,73	2,91	1,46	1,42	0,79	0,94	1,02	0,51	0,87±0,98	M6	A.R.	5/16	0,94	0,71	0,98	2,99	420
C980-125 D1/2	4,92	1,73	2,91	1,46	1,42	0,79	0,94	1,02	0,51	0,87±0,98	M6	A.R.	1/2	0,94	0,71	0,98	2,99	415
C980-150 D5/16	5,91	2,13	3,50	1,73	1,50	0,98	1,14	1,02	0,47	0,98±1,10	M8	A.R.	5/16	1,26	0,87	1,02	3,50	730
C980-150 D1/2	5,91	2,13	3,50	1,73	1,50	0,98	1,14	1,02	0,47	0,98±1,10	M8	A.R.	1/2	1,26	0,87	1,02	3,50	725
C980-175 D5/16	6,81	2,24	3,62	1,85	1,57	1,00	1,24	1,02	0,59	1,02±1,42	M8	A.R.	5/16	1,26	0,87	1,02	3,50	885
C980-175 D5/8	6,81	2,24	3,62	1,85	1,57	1,00	1,24	1,02	0,59	1,02±1,42	M8	A.R.	5/8	1,26	0,87	1,02	3,50	875
C980-200 D5/16	7,95	2,32	3,70	1,93	1,73	0,94	1,38	1,06	0,51	1,10±1,65	M8	A.R.	5/16	1,42	1,10	1,02	3,82	1100
C980-200 D3/4	7,95	2,32	3,70	1,93	1,73	0,94	1,38	1,06	0,51	1,10±1,65	M8	A.R.	3/4	1,42	1,10	1,02	3,82	1090
C980-250 D5/16	9,80	2,68	3,94	2,28	2,32	1,14	1,54	1,42	0,87	1,42±1,97	M8	A.R.	5/16	1,42	1,10	1,02	3,82	1640
C980-250 D3/4	9,80	2,68	3,94	2,28	2,32	1,14	1,54	1,42	0,87	1,42±1,97	M8	A.R.	3/4	1,42	1,10	1,02	3,82	1627

dv= 36 hadune.

It's possible to increase the hole, by boring, until dm.

A.R.= Upon Request.



ART. C990

SOLID CONTROL HANDWHEEL WITH FOLDAWAY REVOLVING HANDLE AND LOCKING HANDWHEEL

MATERIAL:
Reinforced and stabilised polyamide.
Oils and greases resistant.

SURFACE:
Satin.

HANDWHEEL AND HANDLE COLOUR:
Black (RAL 9011).

CENTRAL CAP:
Grey polyamide (RAL 7035).

MAIN INSERT:
Zinc plated steel right through bored bush with H7 tolerance.

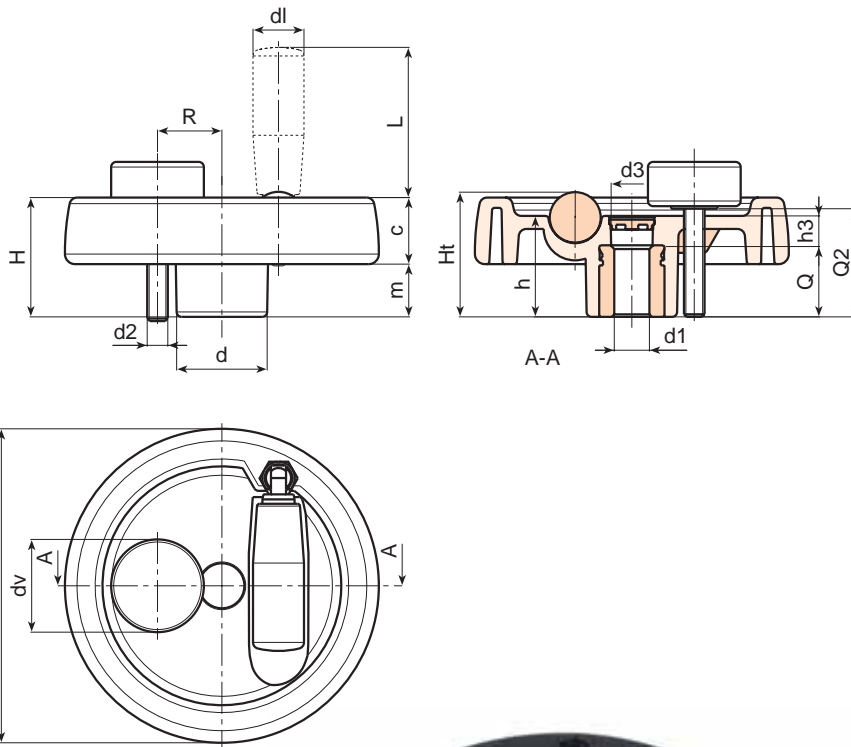
SIDE HANDLE:
Flush, foldaway revolving handle, with hexagonal connection.
Reinforced polyamide handle.
Black-oxide treated internal mechanism.
Fixed with black-oxide treated hexagon socket button head screw ISO 7838.

LOCKING HANDWHEEL:
Cylindrical handwheel G793-36 with threaded stud (see chapter G page 12). Black (RAL 9011).
Caution: the R and Q2 dimensions of the handwheel must be chosen by the customer according to the dimensions of the machinery on which it will be installed.

For fixing systems, or execution of tabs or square holes, please refer to the technical notes attached to the catalogue.

SPECIAL REQUESTS:

- It is possible to supply the inserts with d1 diameter by customer design, on request and for quantities.
- It is possible to supply the inserts in different materials, on request and for quantities.
- It is possible to supply the inserts with different treatment-finishes, on request and for quantities.
- It is possible to supply the complete handwheels with colours as shown in the table at page 11, on request and for quantities.



Art.	D	H	Ht	h	d	m	c	h3	d3	R	d2	Q2	d1 H7	Q	dm	dl	L	Weight (gr)
C990125.TD0801P	124	48	49,5	40	36	21,5	26,5	16	15	22÷25	M6	A.R.	5 H9	24	18	20	38	410
C990125.TD1201P	124	48	49,5	40	36	21,5	26,5	16	15	22÷25	M6	A.R.	12	24	18	20	38	408
C990150.TD0801P	149	53	-	44	38	24,5	28,5	12	26	25÷28	M8	A.R.	5 H9	32	22	20	58	560
C990150.TD1401P	149	53	-	44	38	24,5	28,5	12	26	25÷28	M8	A.R.	14	32	22	20	58	592
C990175.TD0801P	174	58	-	48	40	24,5	33,5	16	26	26÷36	M8	A.R.	5 H9	32	28	26	80	775
C990175.TD1601P	174	58	-	48	40	24,5	33,5	16	26	26÷36	M8	A.R.	16	32	28	26	80	765
C990200.TD0801P	198	63	-	53	44	24,5	38,5	17	26	28÷42	M8	A.R.	5 H9	36	28	27	90	1075
C990200.TD2001P	198	63	-	53	44	24,5	38,5	17	26	28÷42	M8	A.R.	20	36	28	27	90	1060
C990250.TD0801P	250	67	-	58	60	29	38	22	36	36÷50	M8	A.R.	5 H9	36	28	27	90	1560
C990250.TD2001P	250	67	-	58	60	29	38	22	36	36÷50	M8	A.R.	20	36	28	27	90	1545

dv = 36 mm

It's possible to increase the hole, by boring, until dm

A.R. = Upon Request



BOTECA

SOLID CONTROL HANDWHEEL WITH FOLDAWAY REVOLVING HANDLE AND LOCKING HANDWHEEL

MATERIAL:

Reinforced and stabilised polyamide.
Oils and greases resistant.

SURFACE:

Satin.

HANDWHEEL AND HANDLE COLOUR:

Black (RAL 9011).

CENTRAL CAP:

Grey polyamide (RAL 7035 code 13).

MAIN INSERT:

Zinc plated steel right through bored bush with H7 tolerance.

SIDE HANDLE:

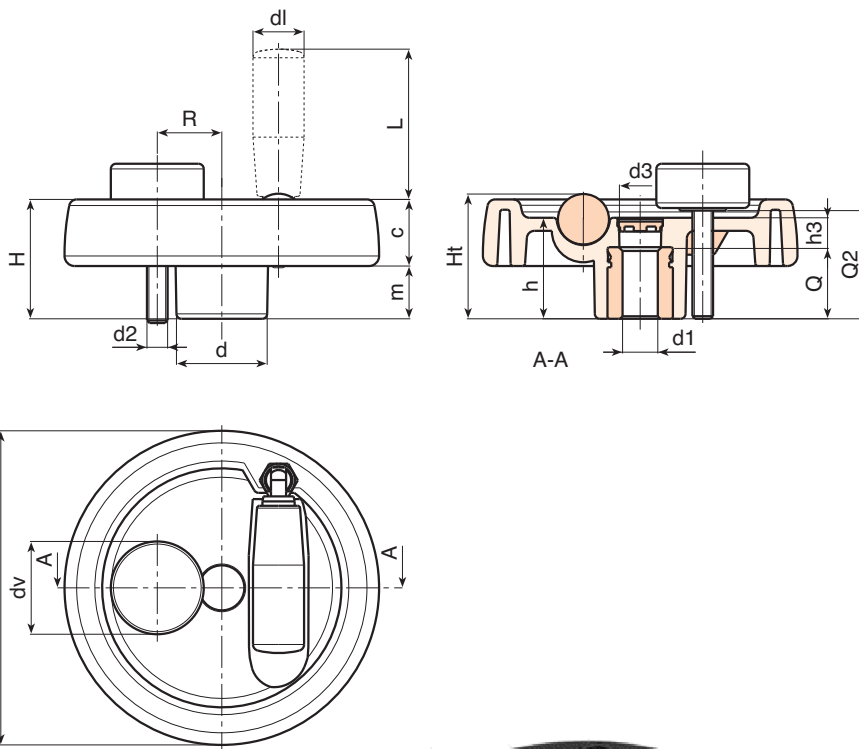
Flush, foldaway revolving handle, with hexagonal connection. Reinforced polyamide handle. Black-oxide treated internal mechanism. Fixed with black-oxide treated hexagon socket button head screw ISO 7838.

LOCKING HANDWHEEL:

Cylindrical handwheel G793-36 with threaded stud (see chapter G page 12). Black (RAL 9011).

Caution: the R and Q2 dimensions of the handwheel must be chosen by the customer according to the dimensions of the machinery on which it will be installed.

For fixing systems, or execution of tabs or square holes, please refer to the technical notes attached to the catalogue.



SPECIAL REQUESTS:

- It is possible to supply the inserts with d1 diameter by customer design, on request and for quantities.
- It is possible to supply the inserts in different materials, on request and for quantities.
- It is possible to supply the inserts with different treatment-finishes, on request and for quantities.
- It is possible to supply the complete handwheels with colours as shown in the table at page 11, on request and for quantities.

Art.	D	H	Ht	h	d	m	c	h3	d3	R	d2	Q2	d1	H7	Q	dm	dl	L	Weight (gr)
C990-125 D5/16	4,88	1,89	1,95	1,57	1,42	0,85	26,5	0,63	0,59	0,87±0,98	M6	A.R.	5/16	0,94	0,71	0,79	1,50	410	
C990-125 D1/2	4,88	1,89	1,95	1,57	1,42	0,85	26,5	0,63	0,59	0,87±0,98	M6	A.R.	1/2	0,94	0,71	0,79	1,50	408	
C990-150 D5/16	5,87	2,09	-	1,73	1,50	0,96	28,5	0,47	1,02	0,98±1,10	M8	A.R.	5/16	1,26	0,87	0,79	2,28	560	
C990-150 D1/2	5,87	2,09	-	1,73	1,50	0,96	28,5	0,47	1,02	0,98±1,10	M8	A.R.	1/2	1,26	0,87	0,79	2,28	592	
C990-175 D5/16	6,85	2,28	-	1,89	1,57	0,96	33,5	0,63	1,02	1,02±1,42	M8	A.R.	5/16	1,26	1,10	1,02	3,15	775	
C990-175 D5/8	6,85	2,28	-	1,89	1,57	0,96	33,5	0,63	1,02	1,02±1,42	M8	A.R.	5/8	1,26	1,10	1,02	3,15	765	
C990-200 D5/16	7,80	2,48	-	2,09	1,73	0,96	38,5	0,67	1,02	1,10±1,65	M8	A.R.	5/16	1,42	1,10	1,06	3,54	1075	
C990-200 D3/4	7,80	2,48	-	2,09	1,73	0,96	38,5	0,67	1,02	1,10±1,65	M8	A.R.	3/4	1,42	1,10	1,06	3,54	1060	
C990-250 D5/16	9,84	2,64	-	2,28	2,36	1,14	38	0,87	1,42	1,42±1,97	M8	A.R.	5/16	1,42	1,10	1,06	3,54	1560	
C990-250 D3/4	9,84	2,64	-	2,28	2,36	1,14	38	0,87	1,42	1,42±1,97	M8	A.R.	3/4	1,42	1,10	1,06	3,54	1545	

dv= 36 mm.

It's possible to increase the hole, by boring, until dm.

A.R.= Upon Request.

